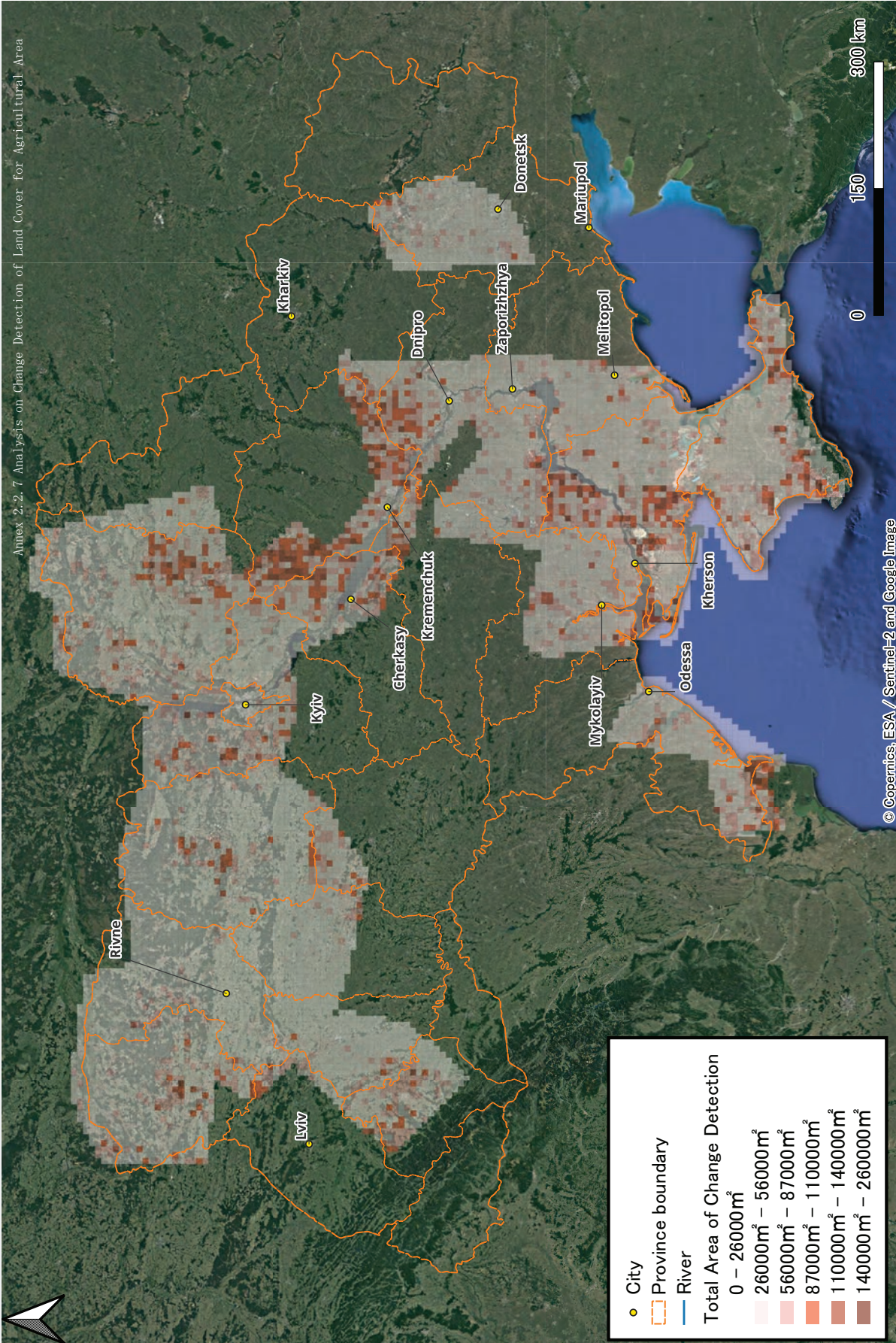


## **Annex 2.2.7**

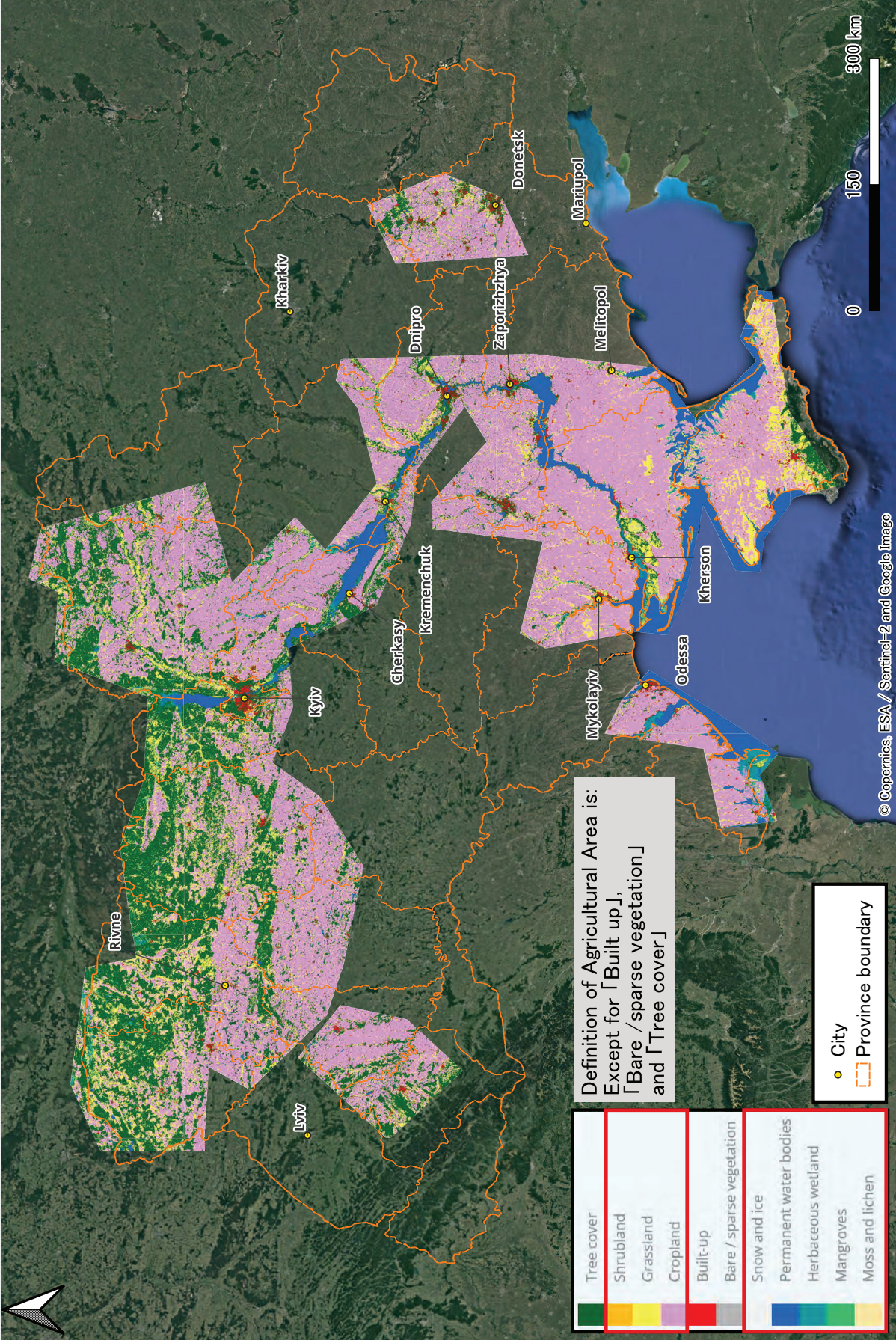
# **Analysis on Change Detection of Land Cover for Agricultural Area**

Analysis on Change Detection of Land Cover for Agricultural Area

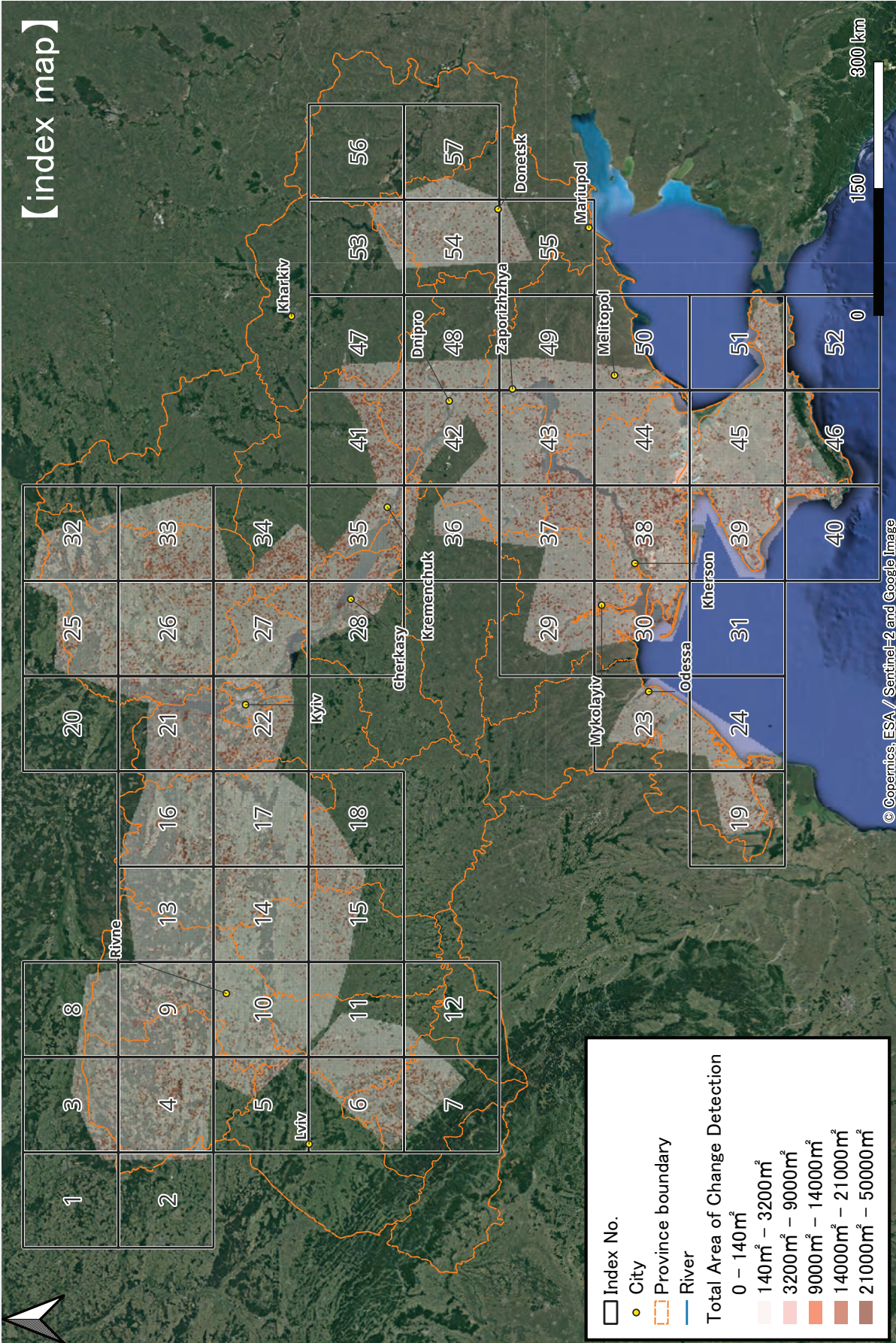


# Land Cover Classification for Agricultural Area

WorldCover 2021 provided by ESA  
 (https://worldcover2021.esa.int/)



Analysis on Change Detection of Land Cover for Agricultural Area (detailed map)



- Index No.
- City
- Province boundary
- River

**Total Area of Change Detection**

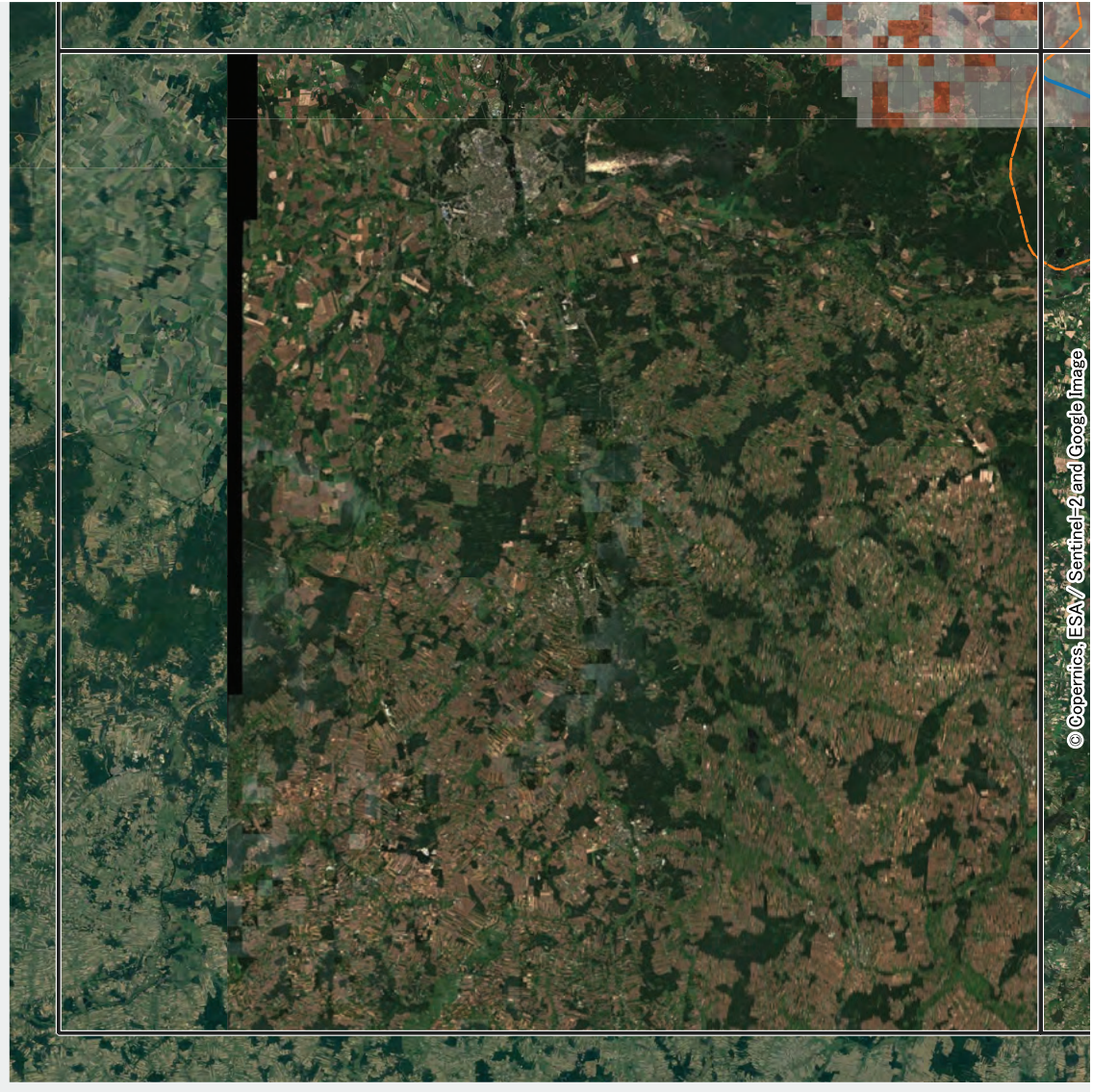
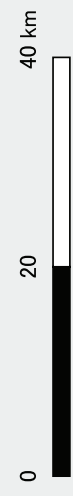
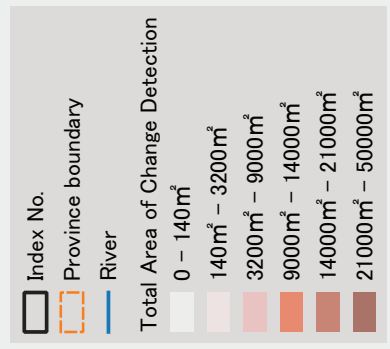
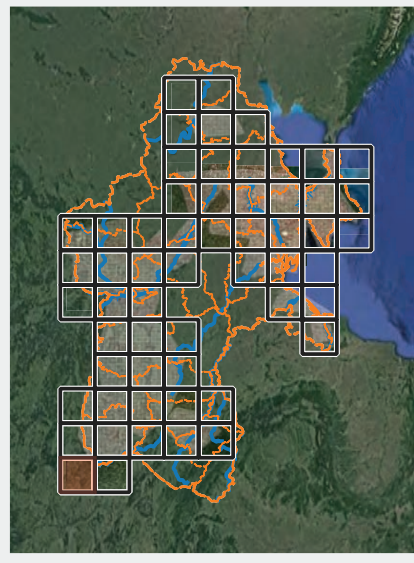
- 0 - 140m<sup>2</sup>
- 140m<sup>2</sup> - 3200m<sup>2</sup>
- 3200m<sup>2</sup> - 9000m<sup>2</sup>
- 9000m<sup>2</sup> - 14000m<sup>2</sup>
- 14000m<sup>2</sup> - 21000m<sup>2</sup>
- 21000m<sup>2</sup> - 50000m<sup>2</sup>

© Copernicus, ESA / Sentinel-2 and Google Image

# Analysis on Change Detection of Land Cover for Agricultural Area (detailed map)

## Index No.1

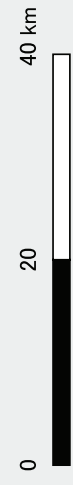
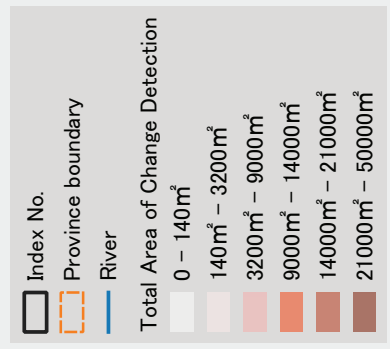
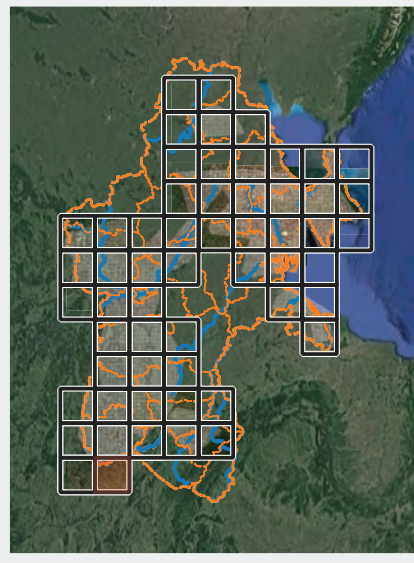
Sentinel-2  
(2021/06~08 - 2022/06~08)



# Analysis on Change Detection of Land Cover for Agricultural Area (detailed map)



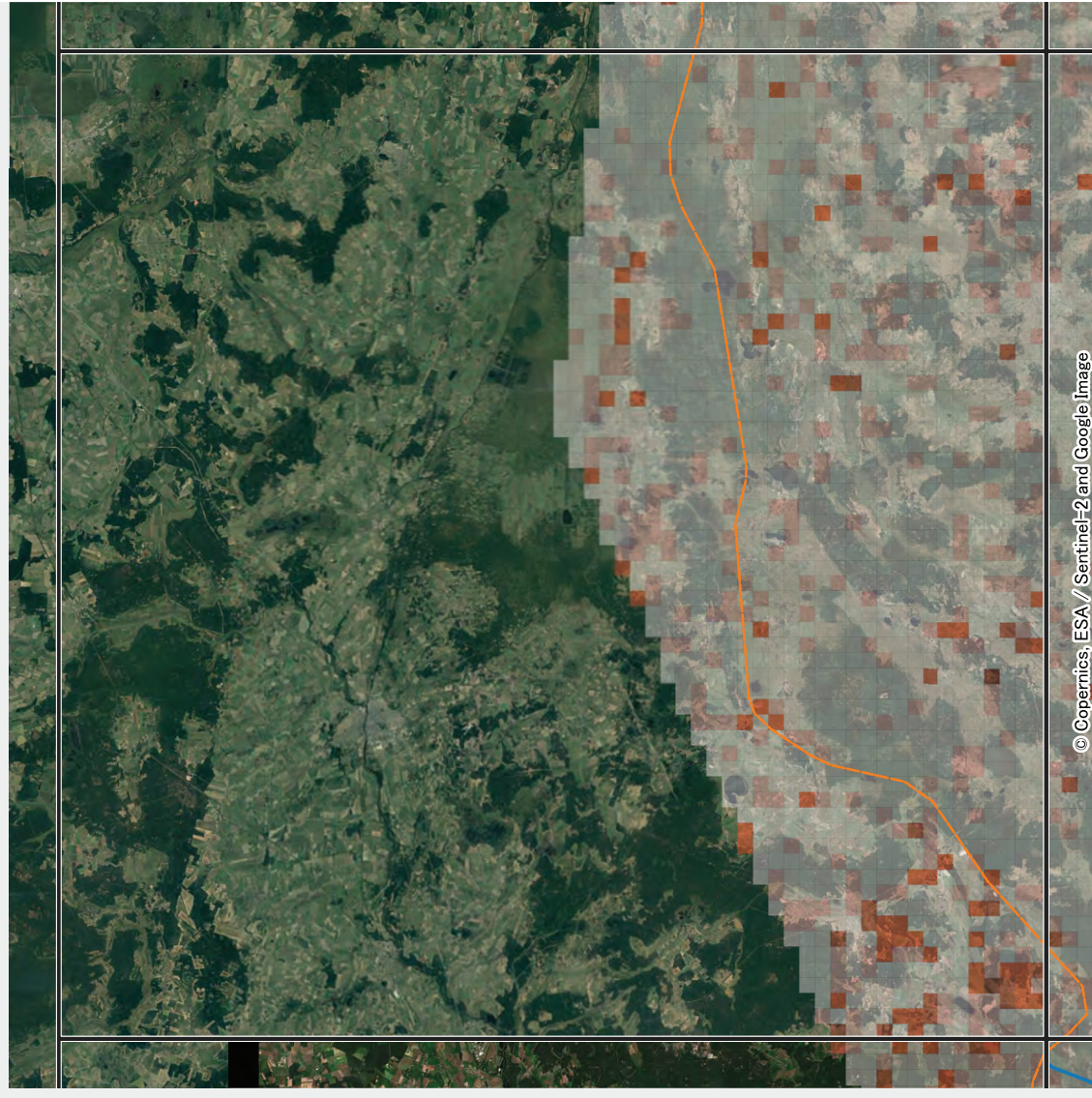
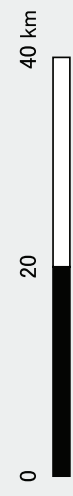
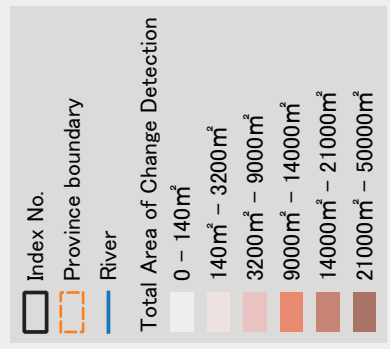
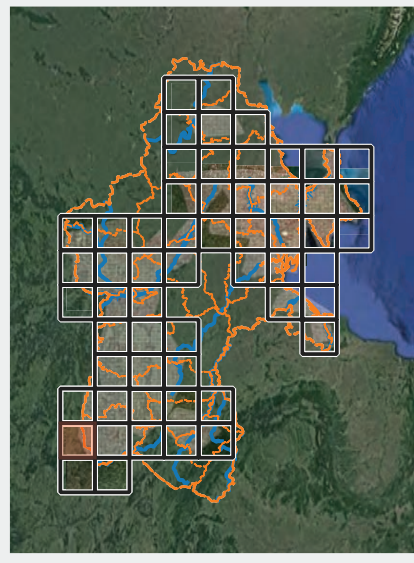
Index No.2  
Sentinel-2  
(2021/06~08 - 2022/06~08)



© Copernicus, ESA / Sentinel-2 and Google Image

# Analysis on Change Detection of Land Cover for Agricultural Area (detailed map) Index No.3

Sentinel-2  
(2021/06~08 - 2022/06~08)

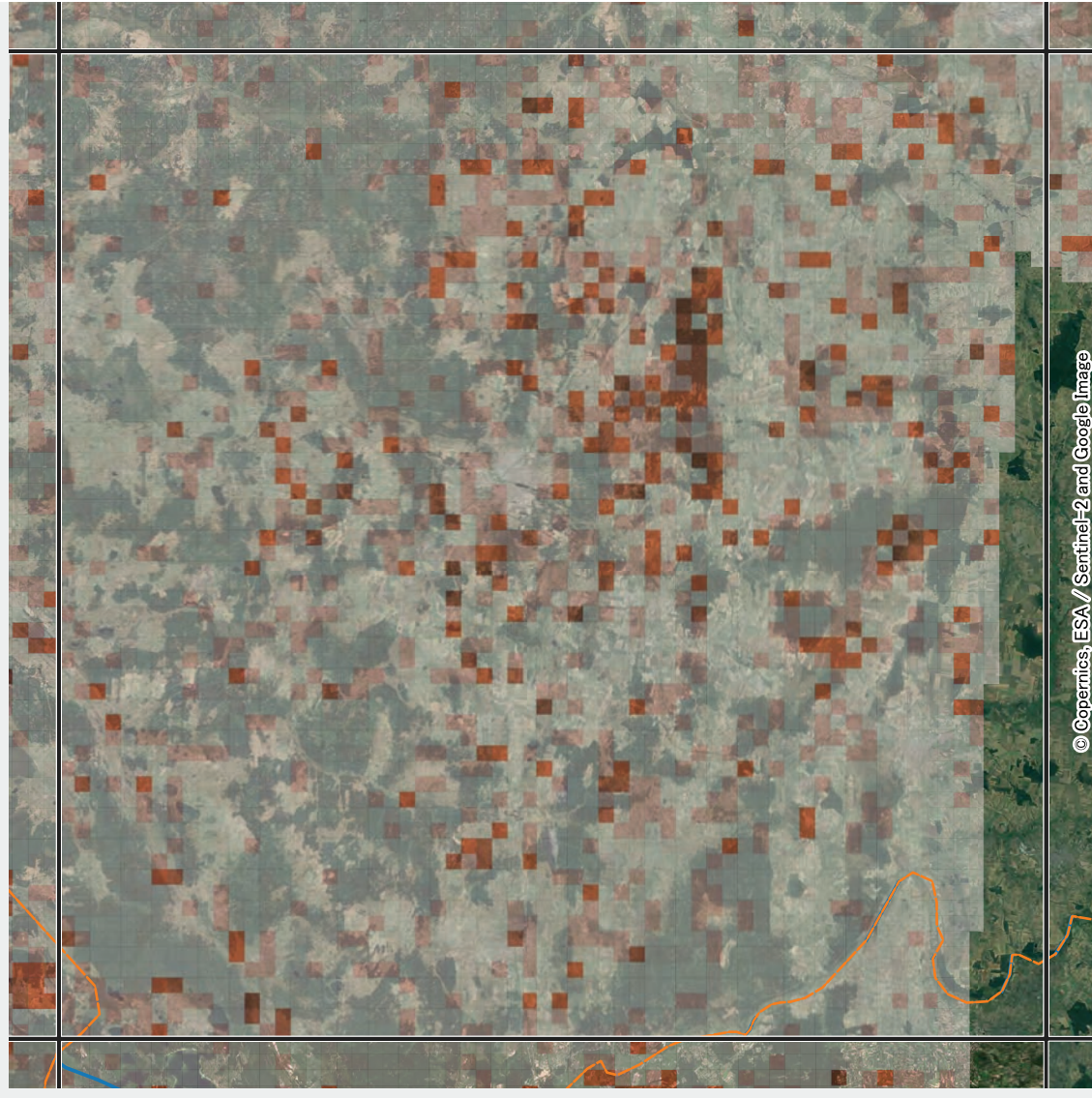
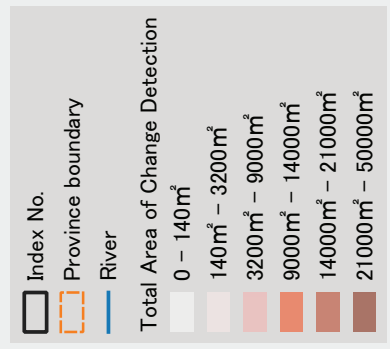
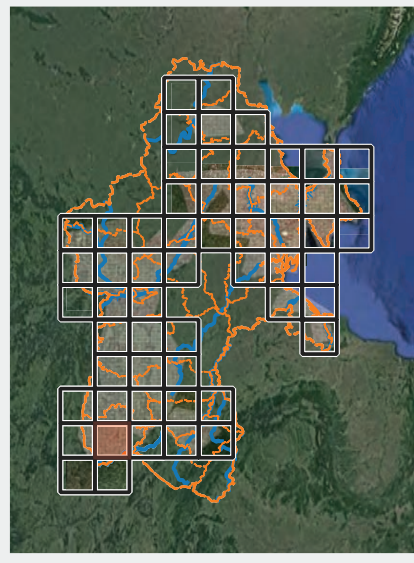


© Copernicus, ESA // Sentinel-2 and Google Image

# Analysis on Change Detection of Land Cover for Agricultural Area (detailed map)

## Index No.4

Sentinel-2  
(2021/06~08 - 2022/06~08)



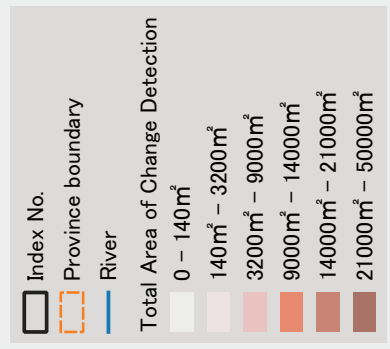
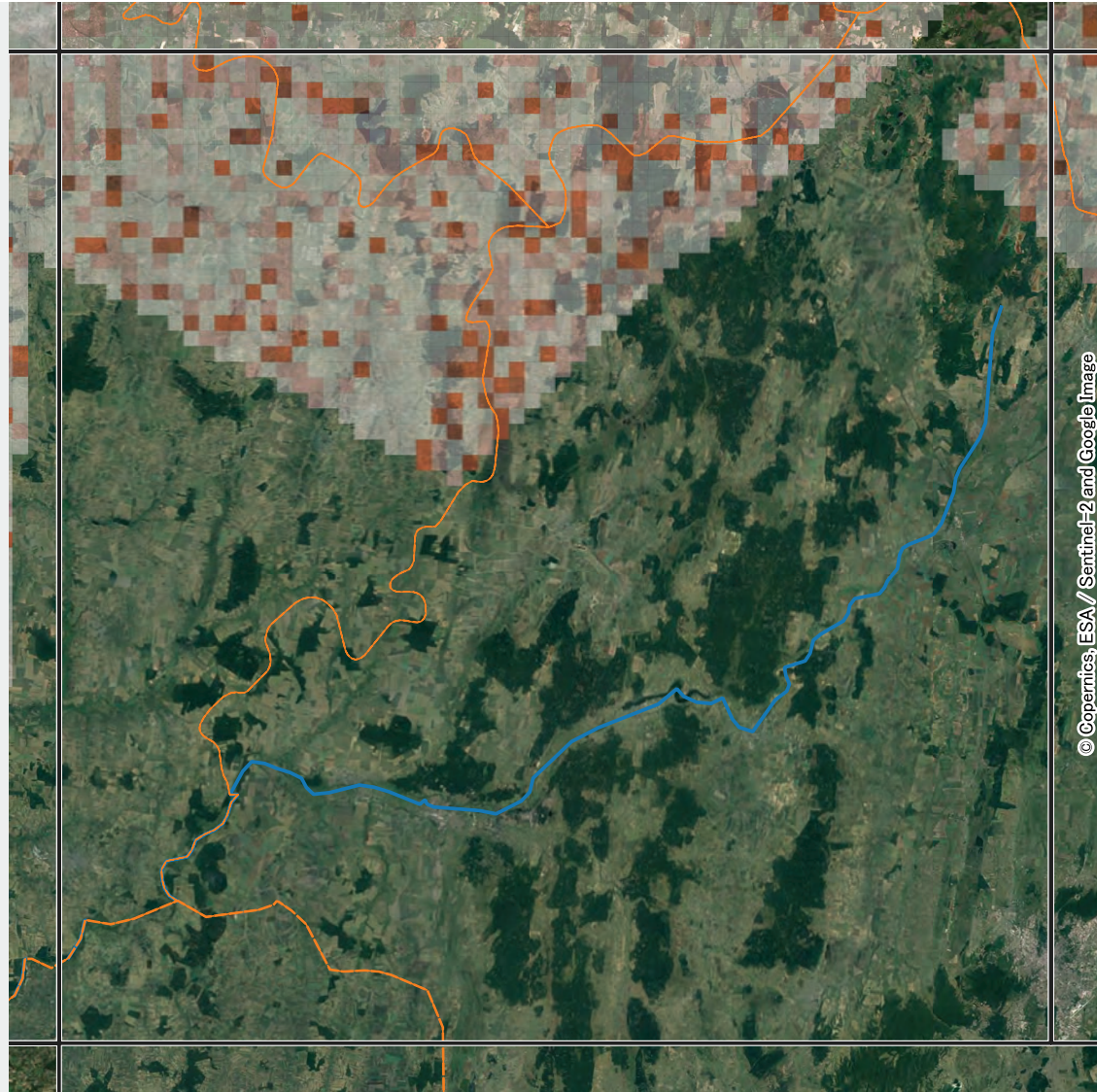
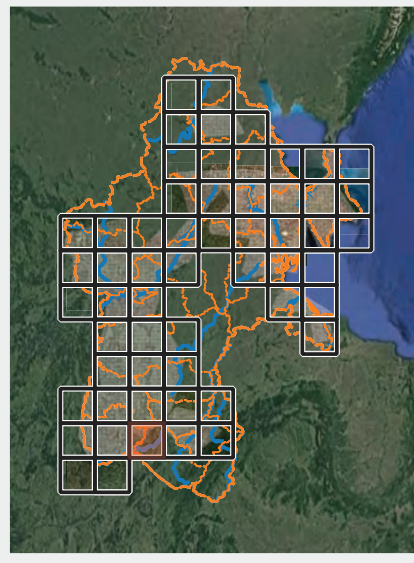
© Copernicus, ESA / Sentinel-2 and Google Image



# Analysis on Change Detection of Land Cover for Agricultural Area (detailed map)

## Index No.5

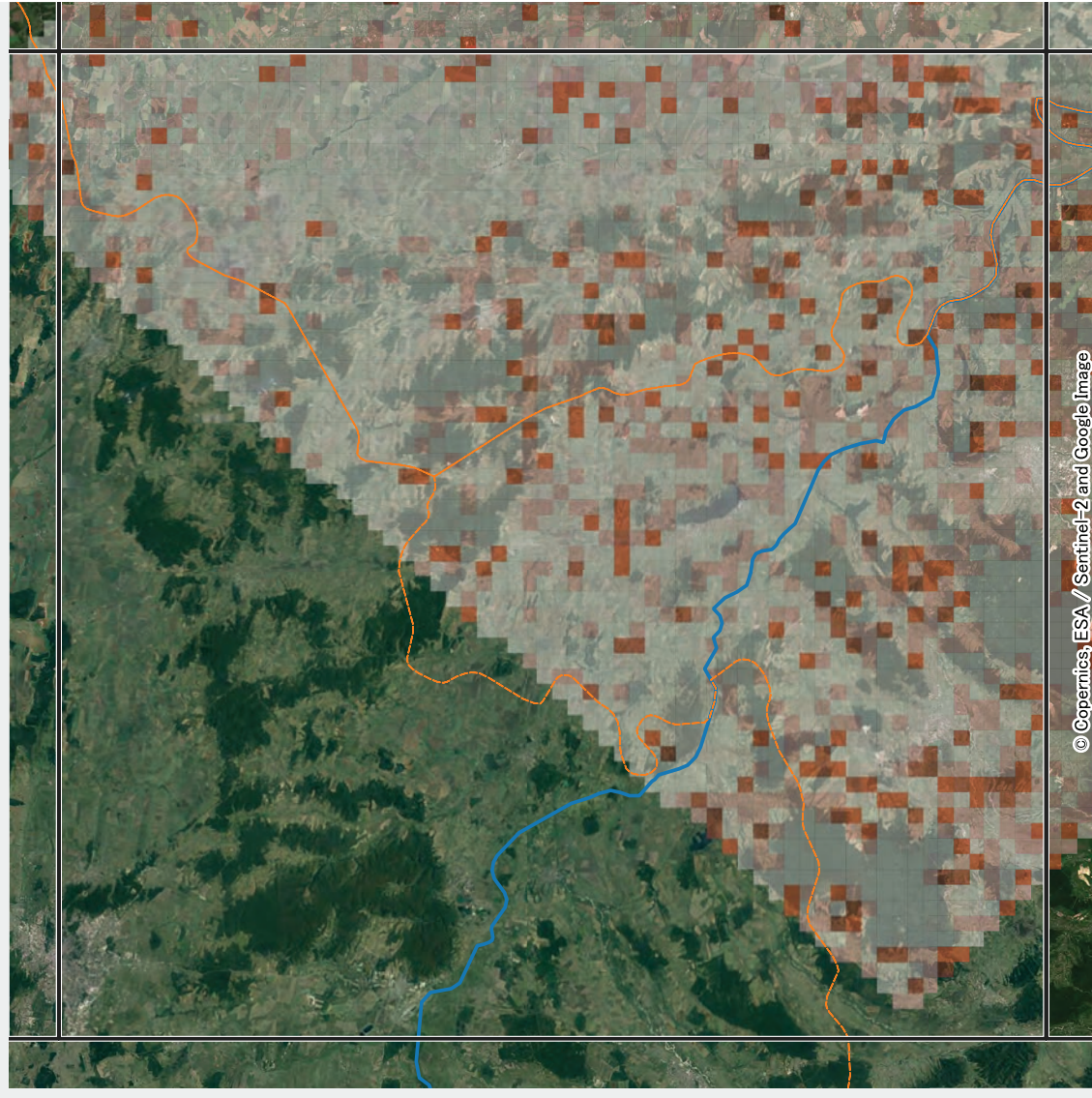
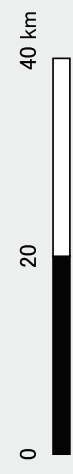
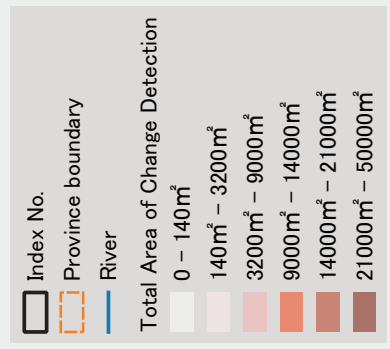
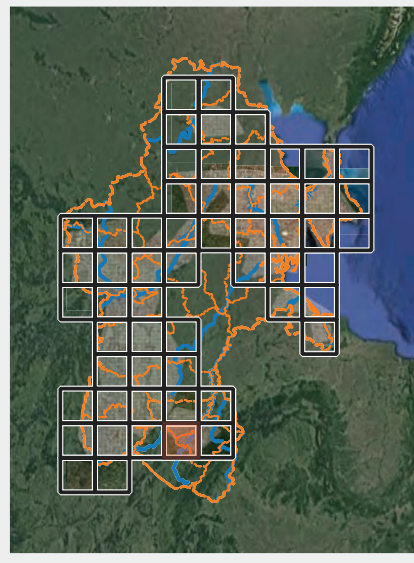
Sentinel-2  
(2021/06~08 - 2022/06~08)



© Copernicus, ESA / Sentinel-2 and Google Image

# Analysis on Change Detection of Land Cover for Agricultural Area (detailed map) Index No.6

Sentinel-2  
(2021/06~08 - 2022/06~08)

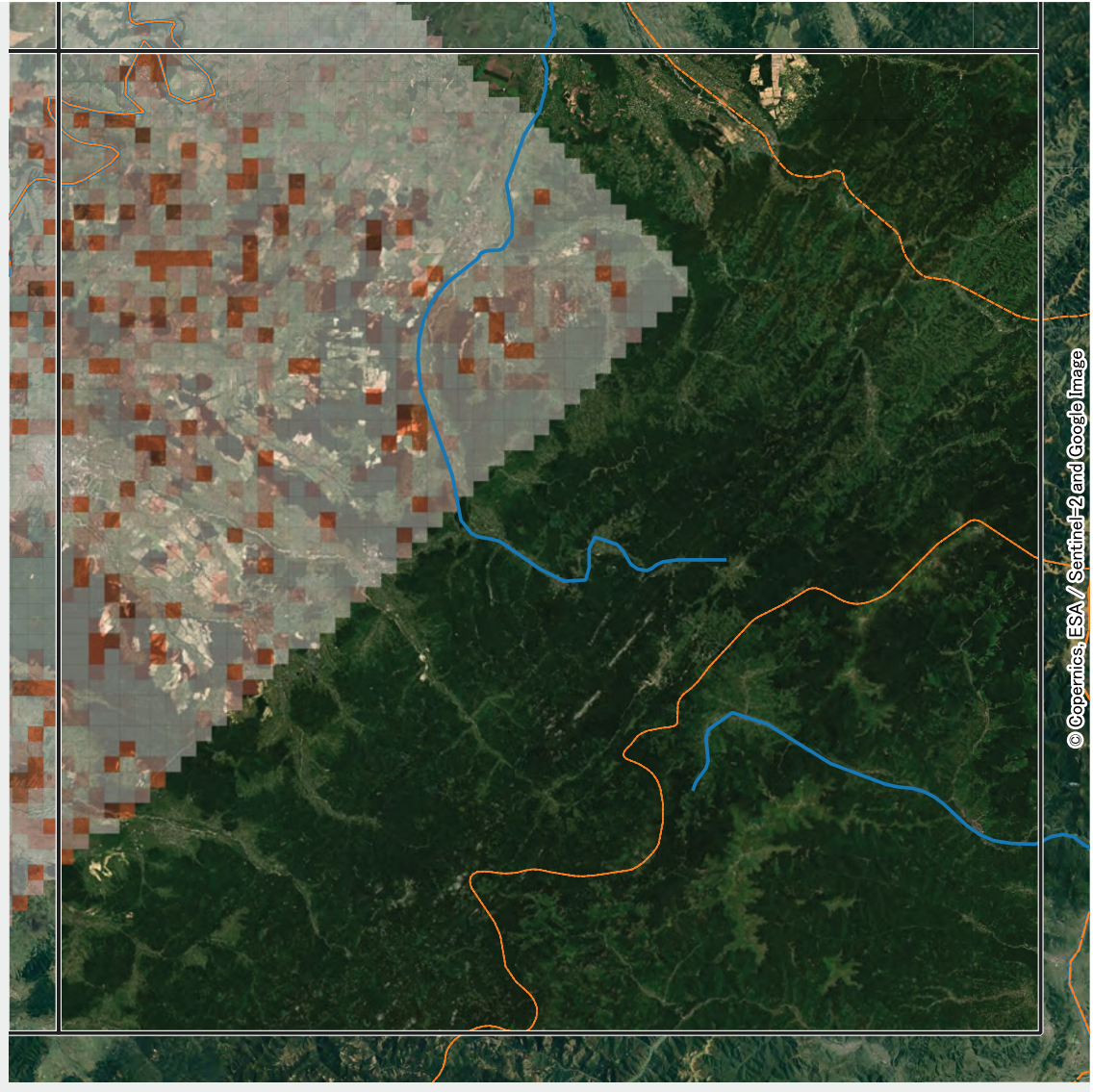
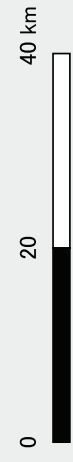
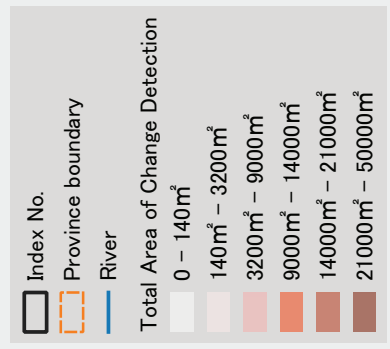
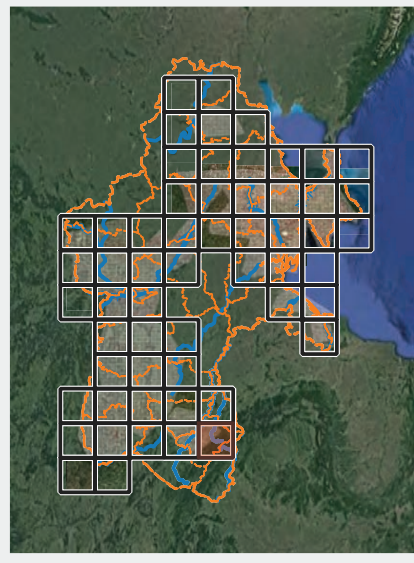


© Copernicus, ESA / Sentinel-2 and Google Image

# Analysis on Change Detection of Land Cover for Agricultural Area (detailed map)

Index No.7

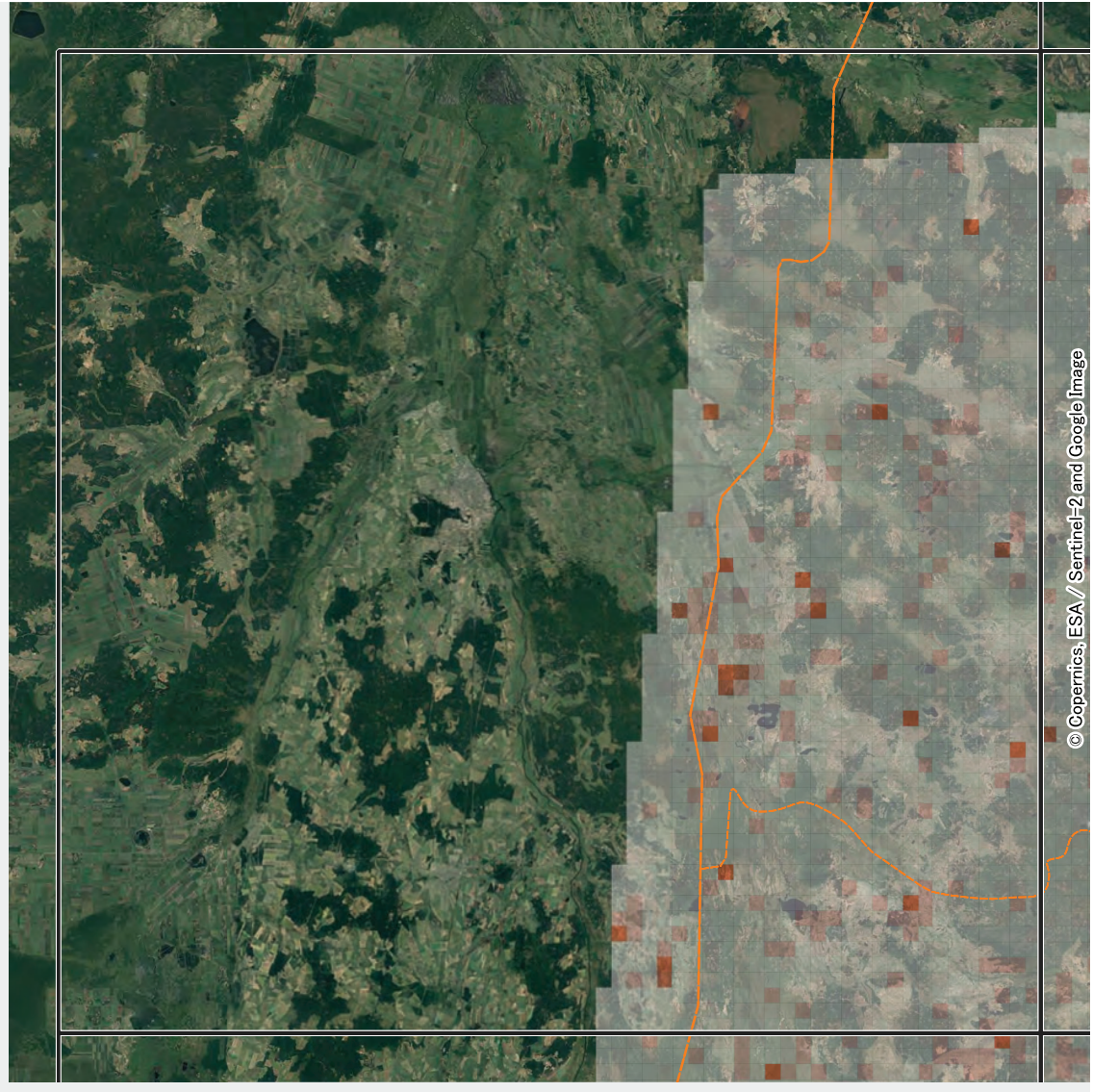
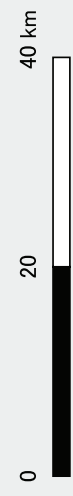
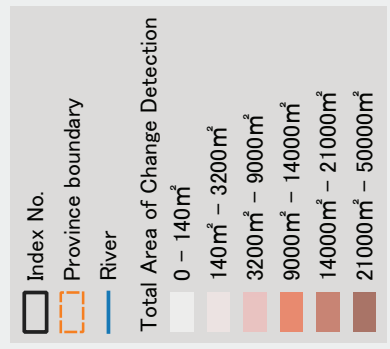
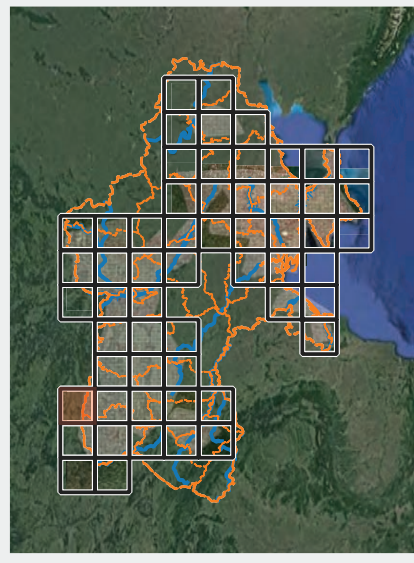
Sentinel-2  
(2021/06~08 - 2022/06~08)



© Copernicus, ESA / Sentinel-2 and Google Image

# Analysis on Change Detection of Land Cover for Agricultural Area (detailed map) Index No.8

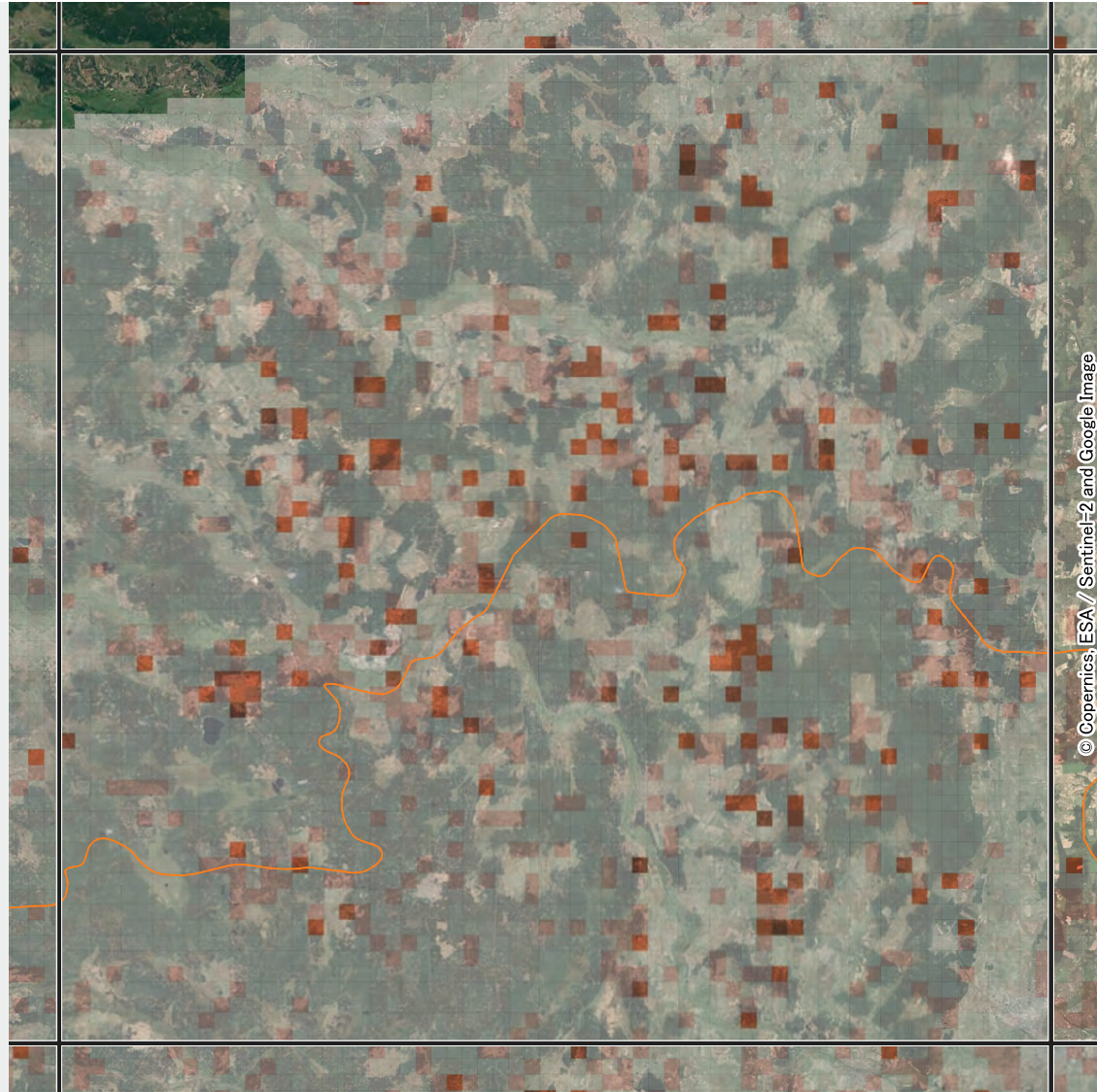
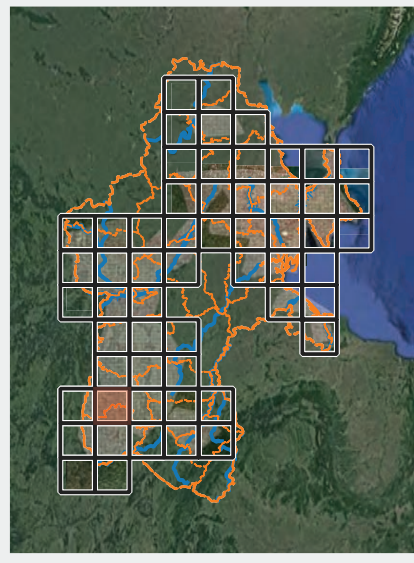
Sentinel-2  
(2021/06~08 - 2022/06~08)



© Copernicus, ESA / Sentinel-2 and Google Image

# Analysis on Change Detection of Land Cover for Agricultural Area (detailed map) Index No.9

Sentinel-2  
(2021/06~08 - 2022/06~08)

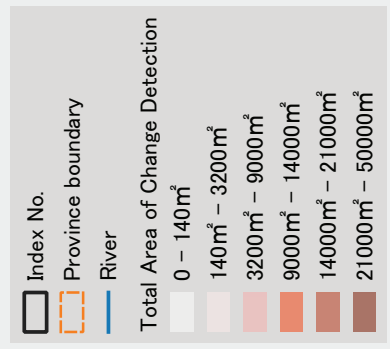
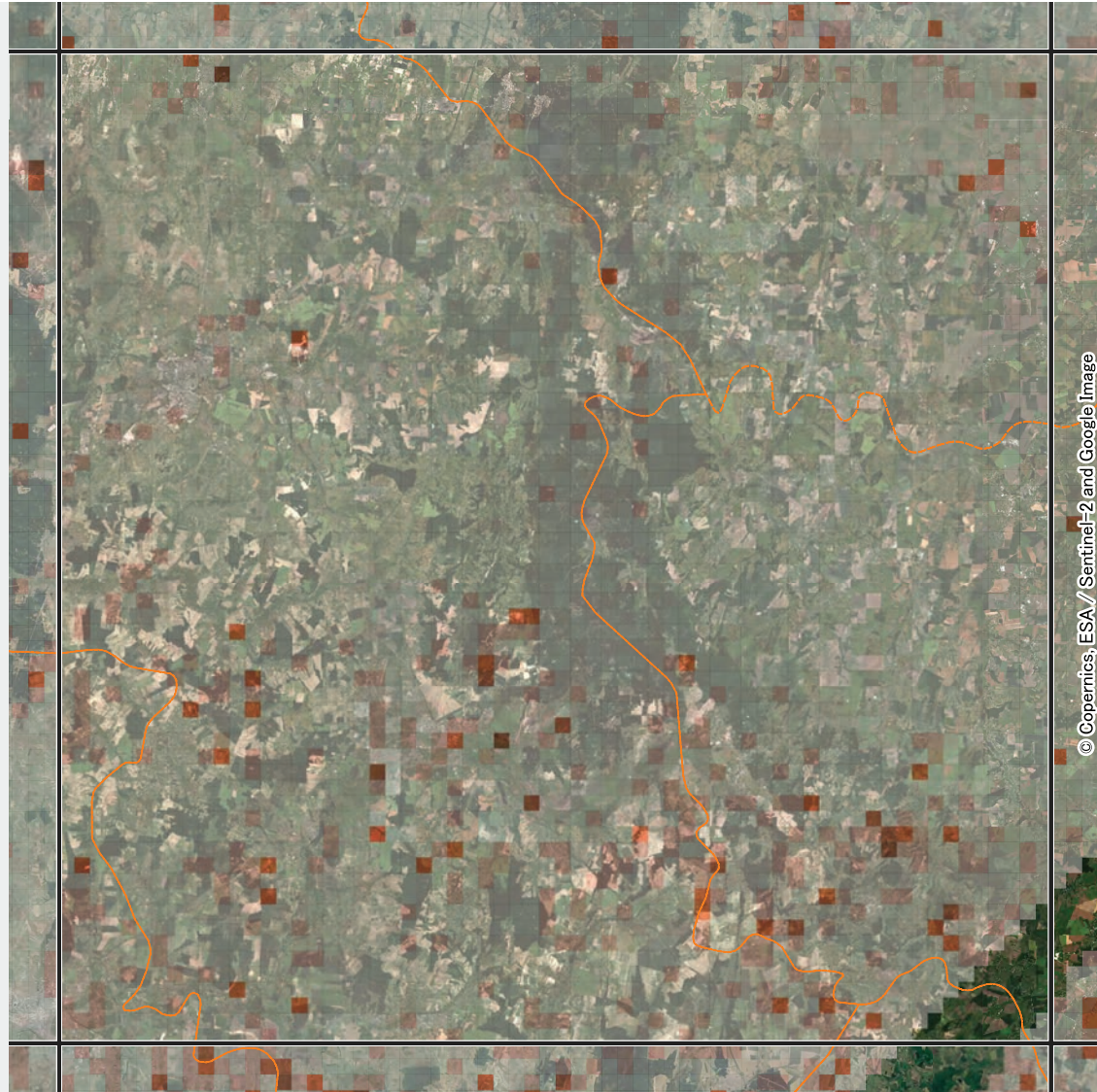
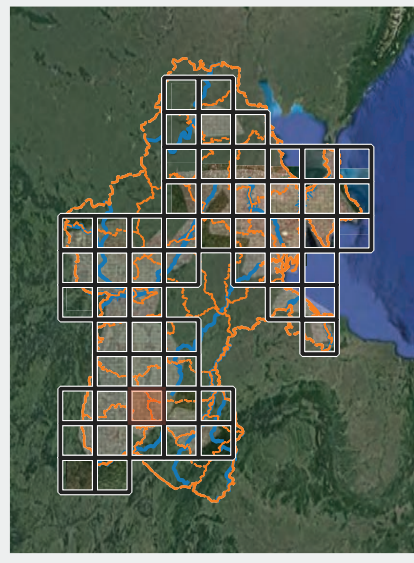


© Copernicus, ESA / Sentinel-2 and Google Image

# Analysis on Change Detection of Land Cover for Agricultural Area (detailed map)

## Index No.10

Sentinel-2  
(2021/06~08 - 2022/06~08)

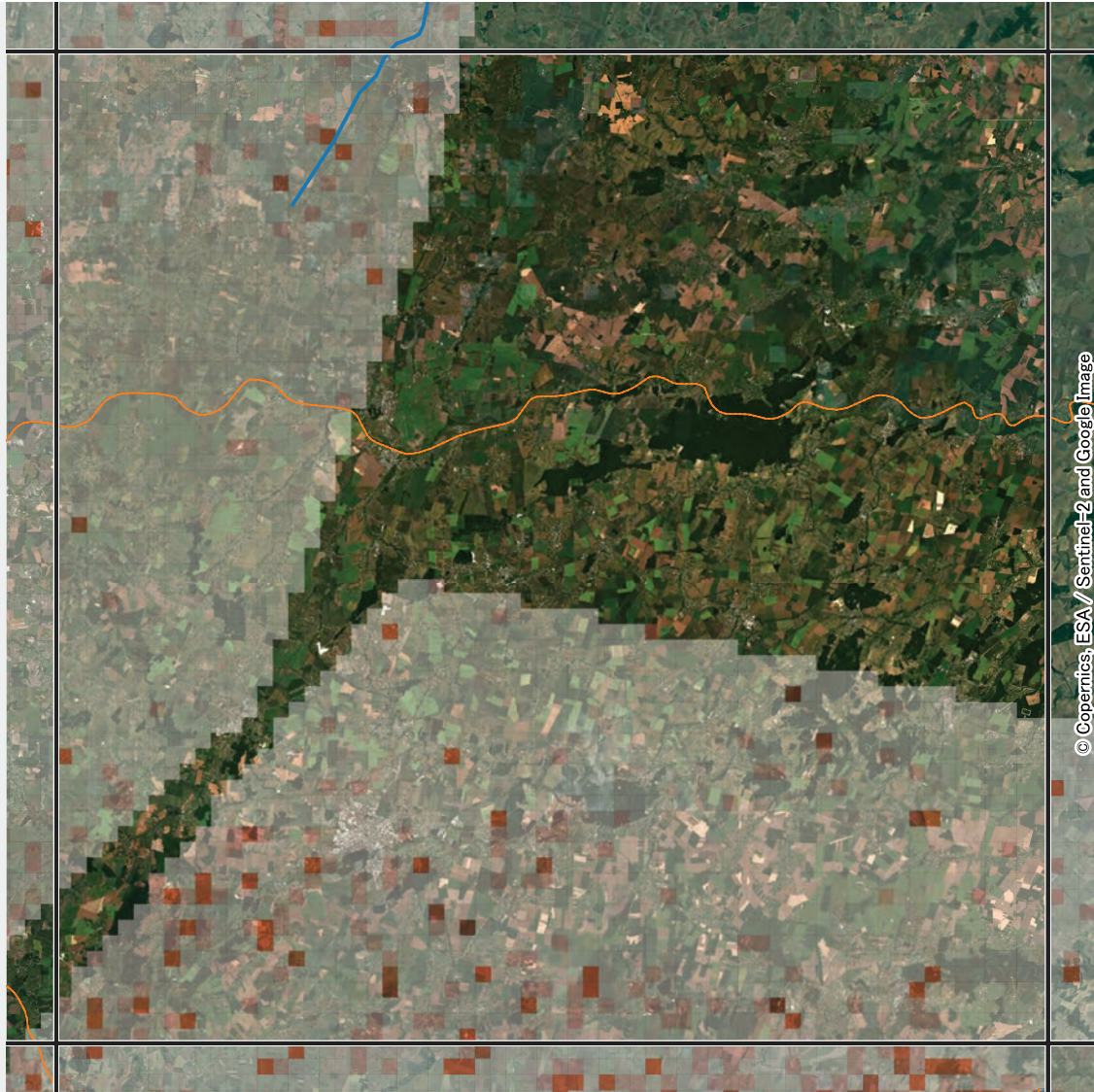
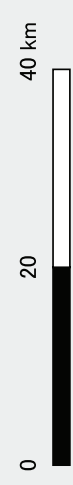
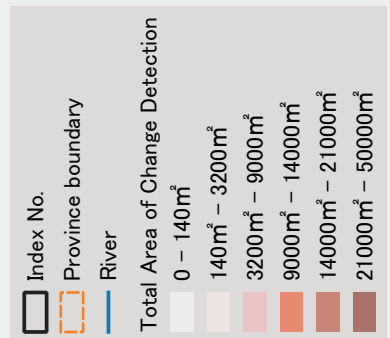
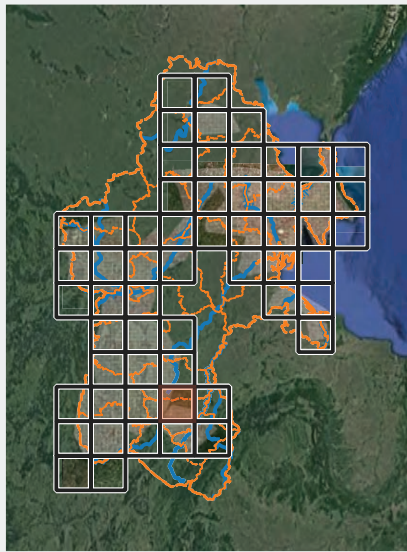


© Copernicus, ESA / Sentinel-2 and Google Image

# Analysis on Change Detection of Land Cover for Agricultural Area (detailed map)

Index No.11

Sentinel-2  
(2021/06~08 - 2022/06~08)

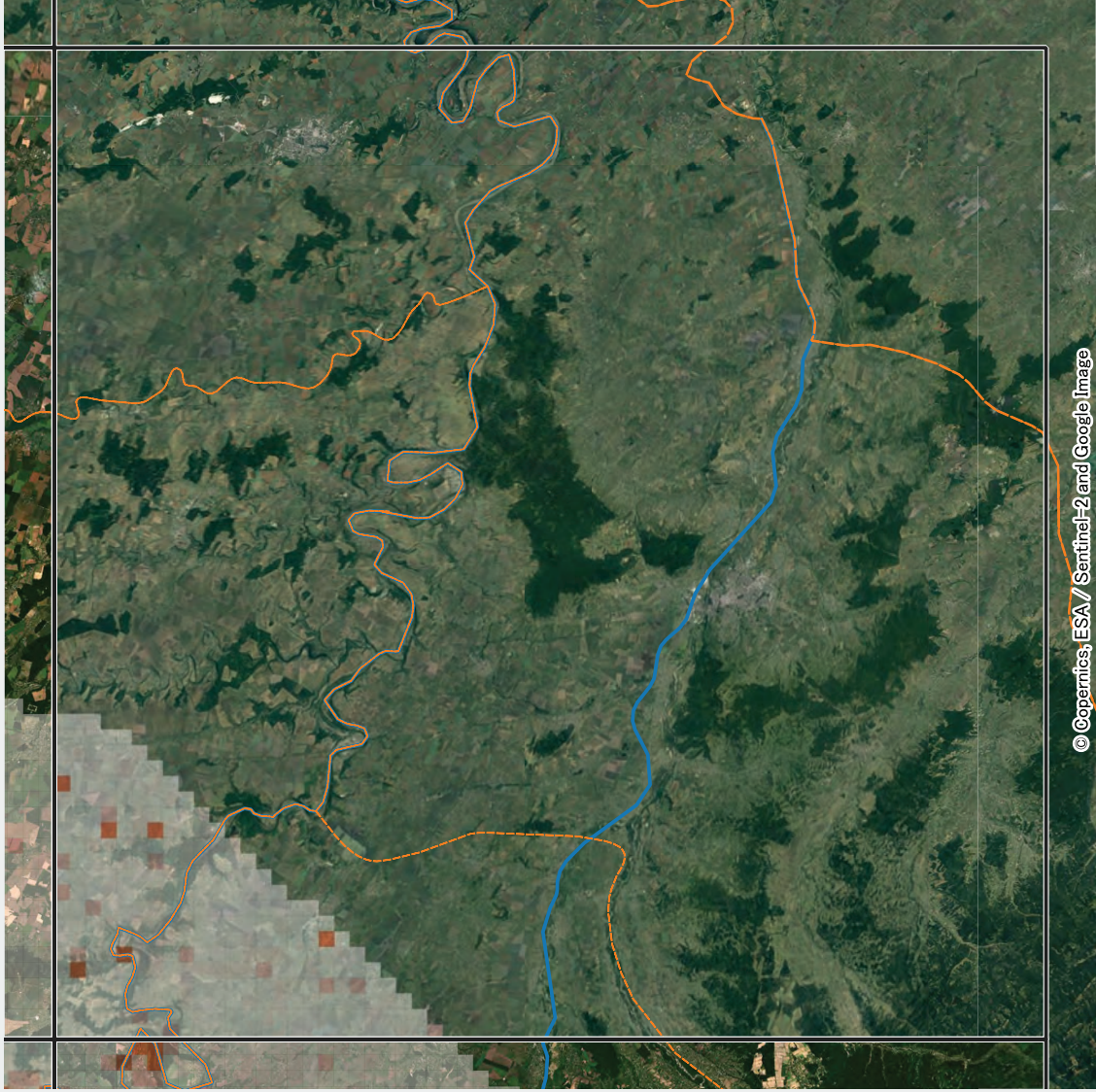
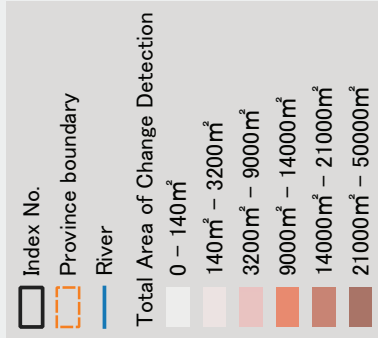
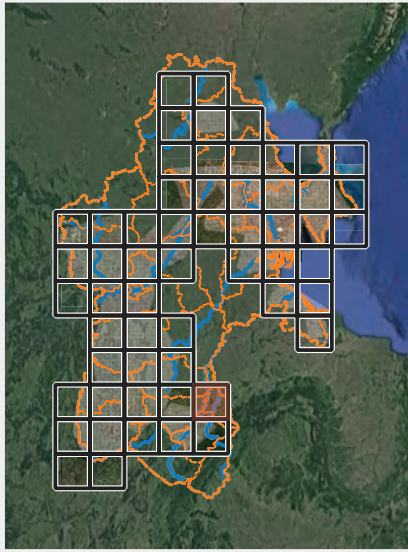


© Copernicus, ESA / Sentinel-2 and Google Image

# Analysis on Change Detection of Land Cover for Agricultural Area (detailed map)

## Index No.12

Sentinel-2  
(2021/06~08 - 2022/06~08)



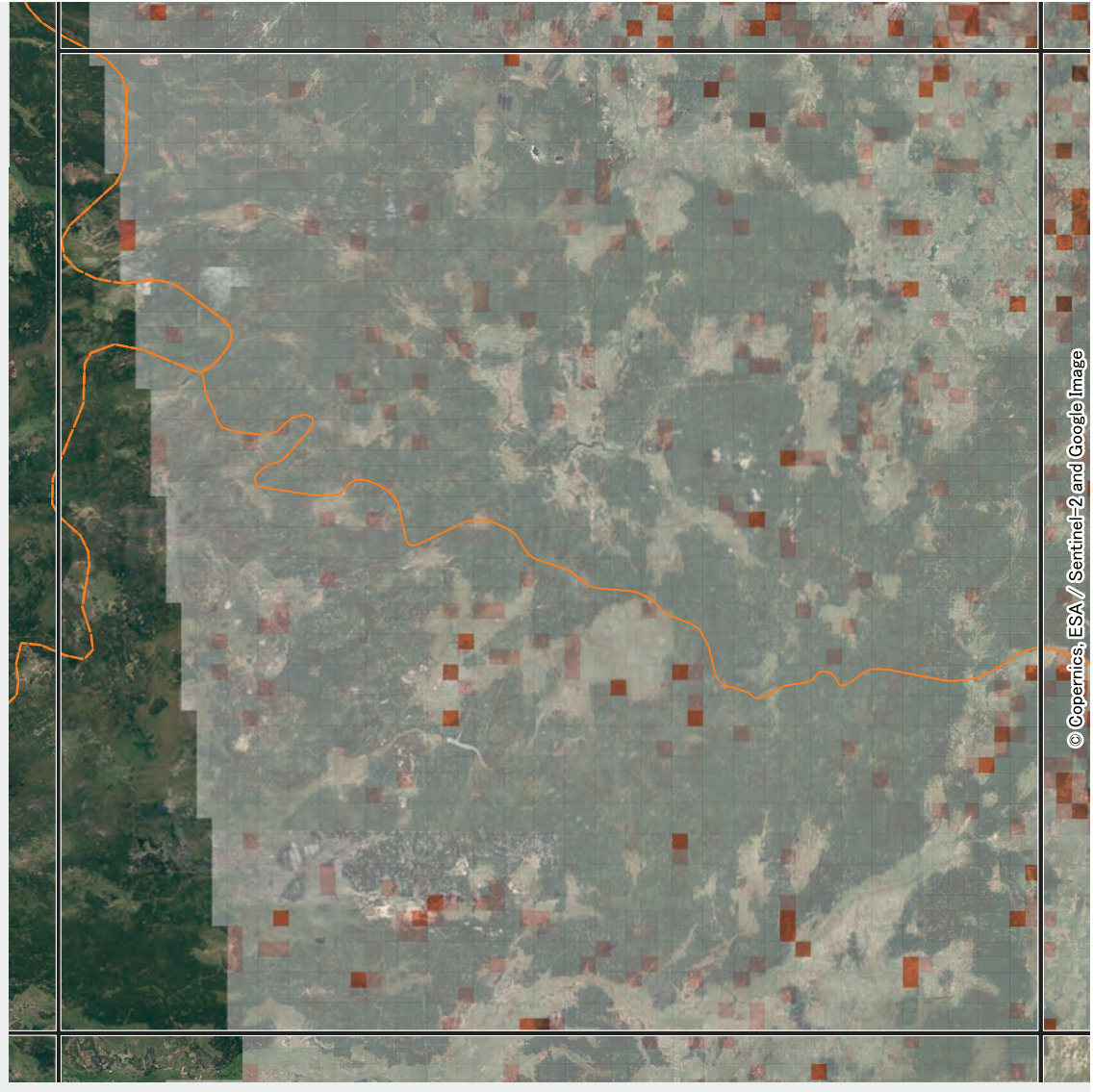
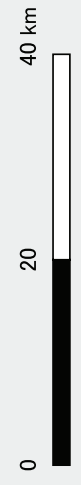
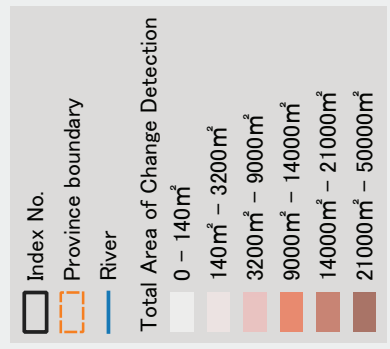
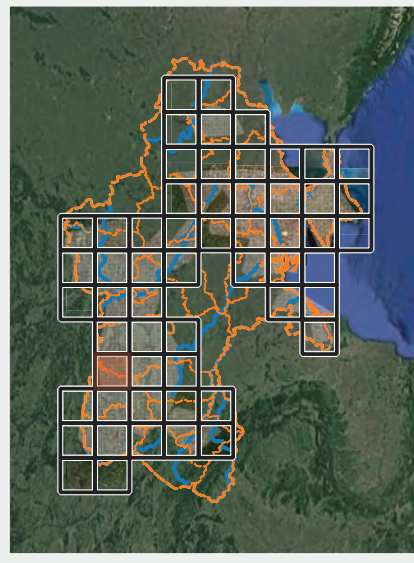
© Copernicus, ESA / Sentinel-2 and Google Image



# Analysis on Change Detection of Land Cover for Agricultural Area (detailed map)

## Index No.13

Sentinel-2  
(2021/06~08 - 2022/06~08)

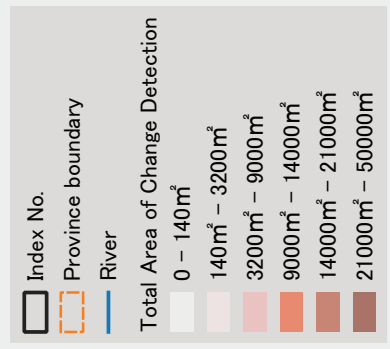
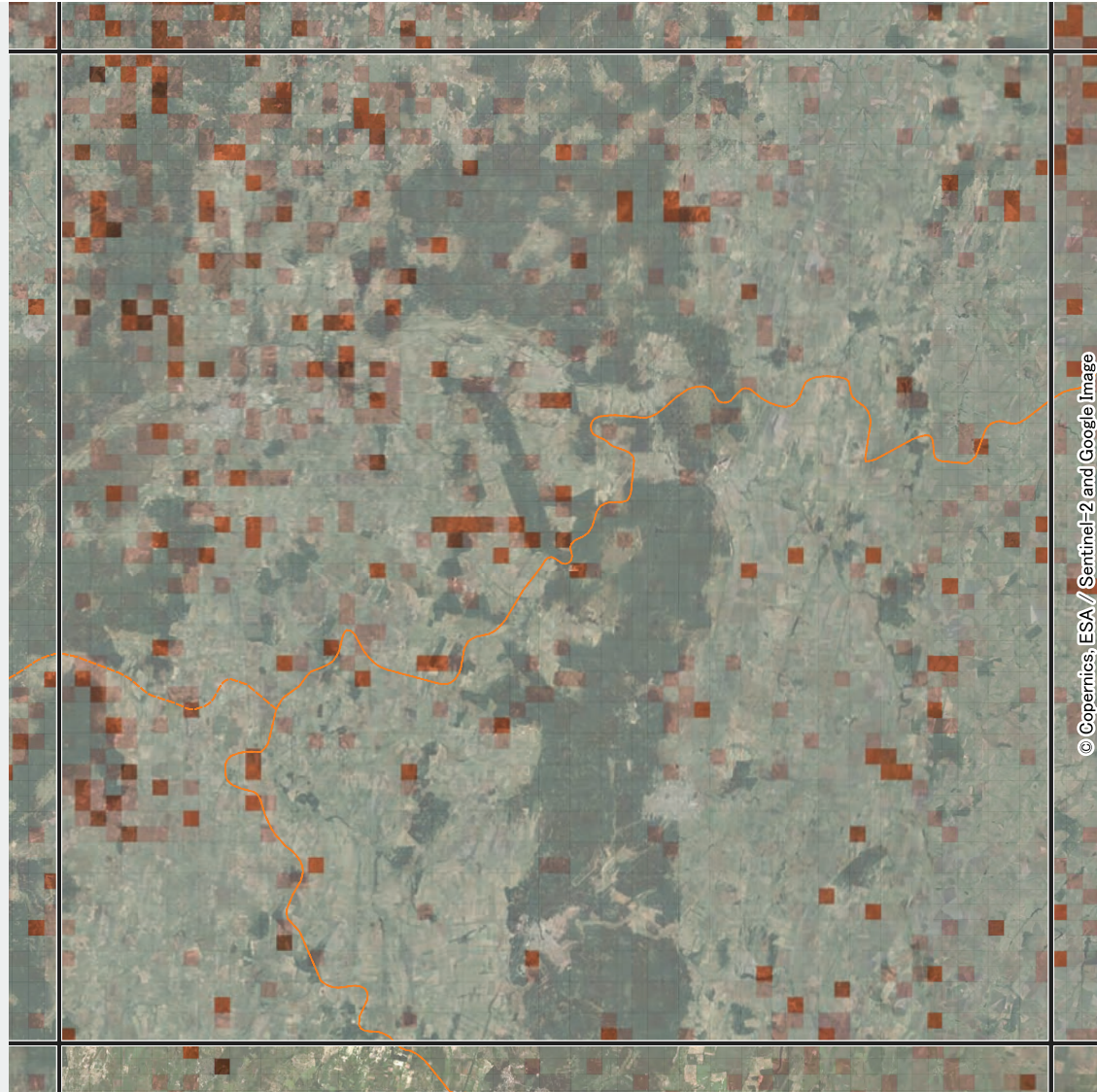
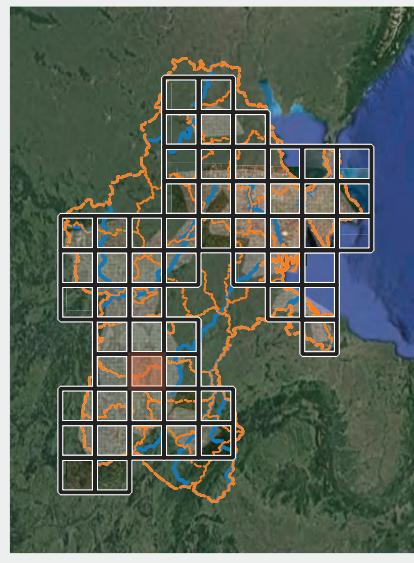


© Copernicus, ESA / Sentinel-2 and Google Image

# Analysis on Change Detection of Land Cover for Agricultural Area (detailed map)

Index No.14

Sentinel-2  
(2021/06~08 - 2022/06~08)

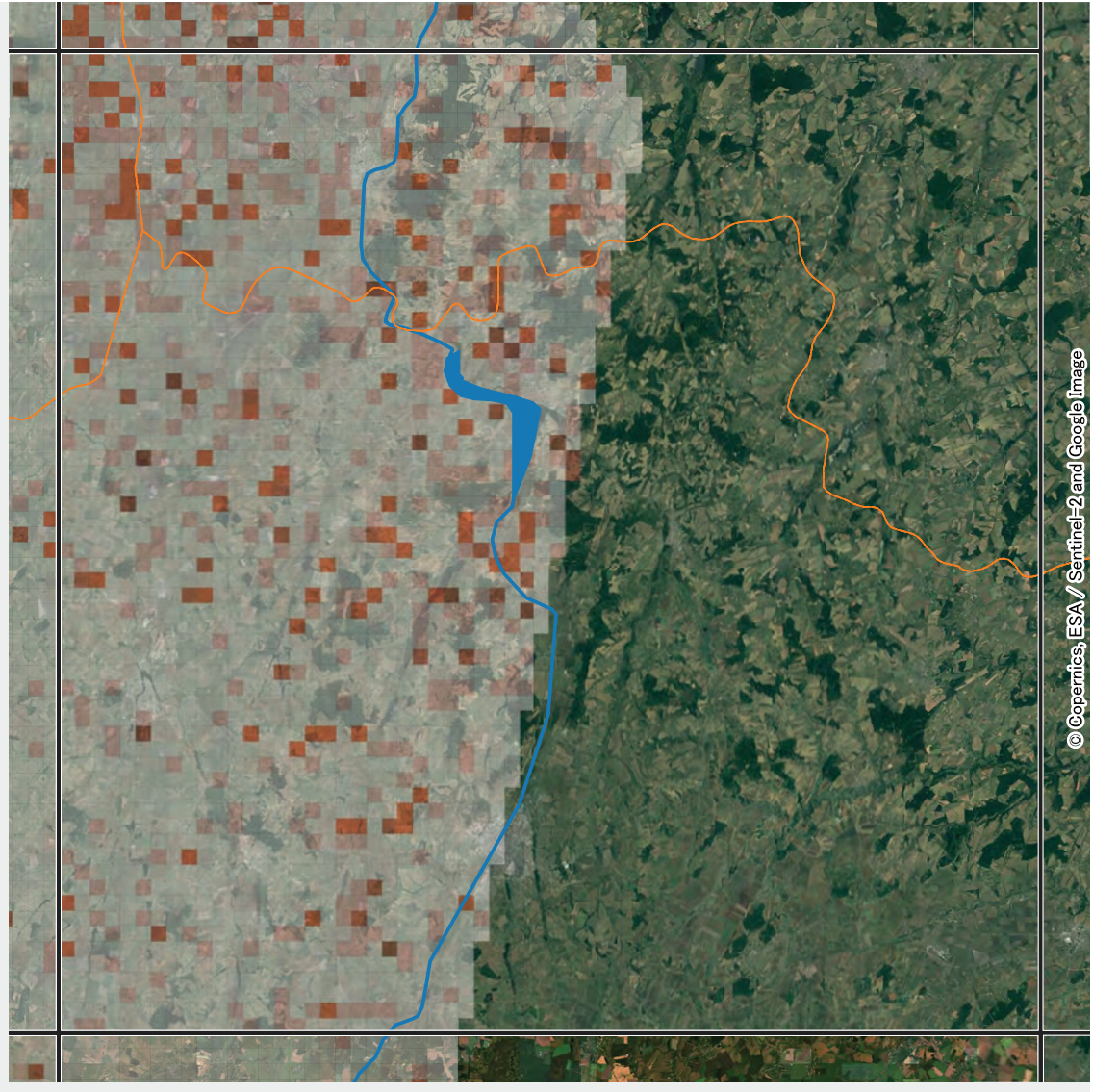
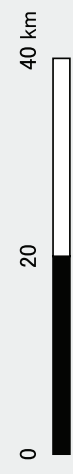
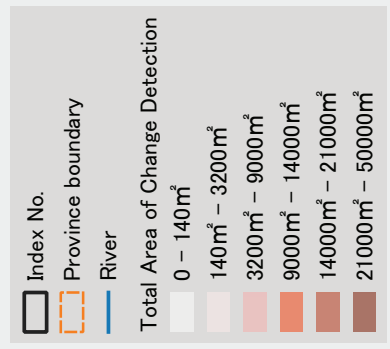
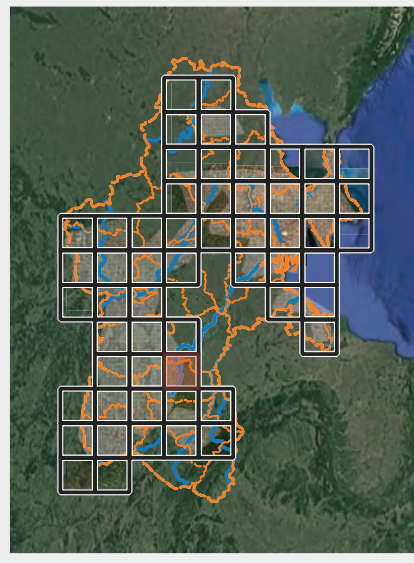


© Copernicus, ESA / Sentinel-2 and Google Image

# Analysis on Change Detection of Land Cover for Agricultural Area (detailed map)

Index No.15

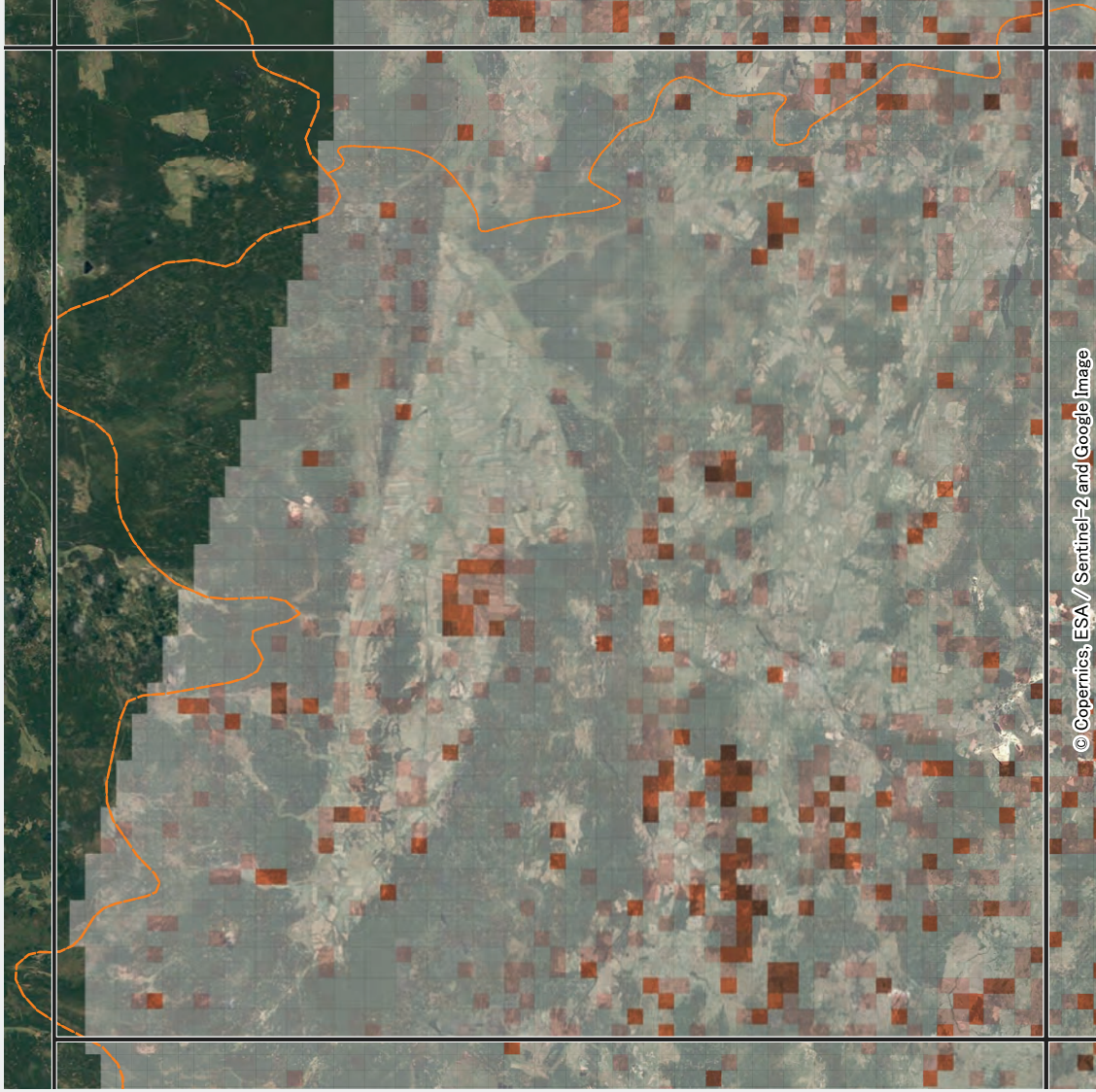
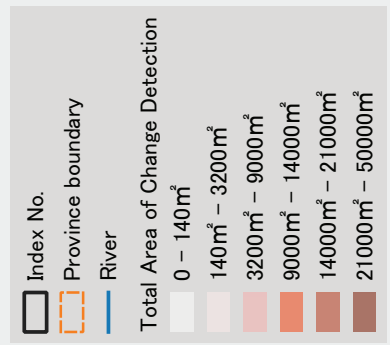
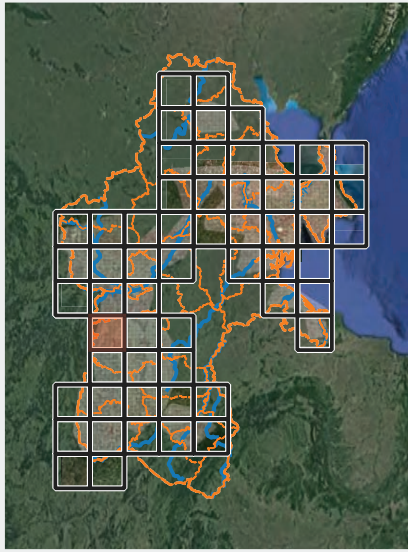
Sentinel-2  
(2021/06~08 - 2022/06~08)



© Copernicus, ESA / Sentinel-2 and Google Image

# Analysis on Change Detection of Land Cover for Agricultural Area (detailed map) Index No.16

Sentinel-2  
(2021/06~08 - 2022/06~08)



© Copernicus, ESA / Sentinel-2 and Google Image