

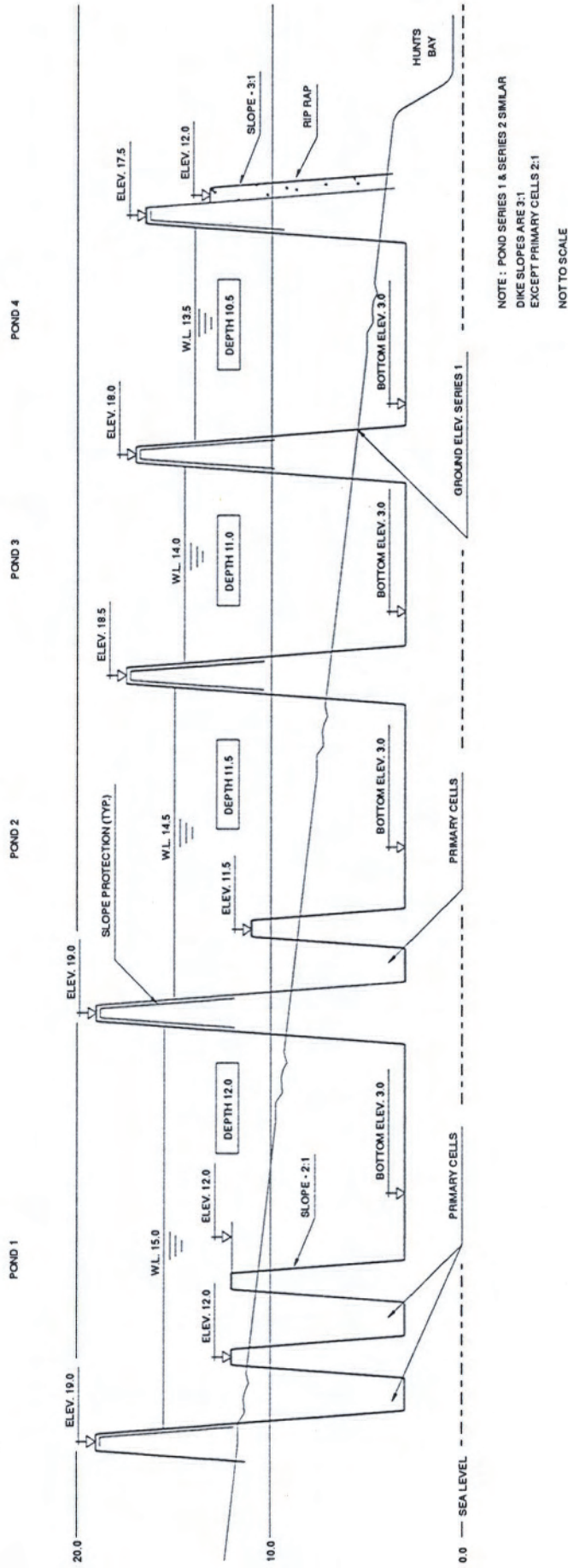


LEGEND

TRIAL #2 - BOTTOM ELEVATION 3.0ft ABOVE SEA LEVEL

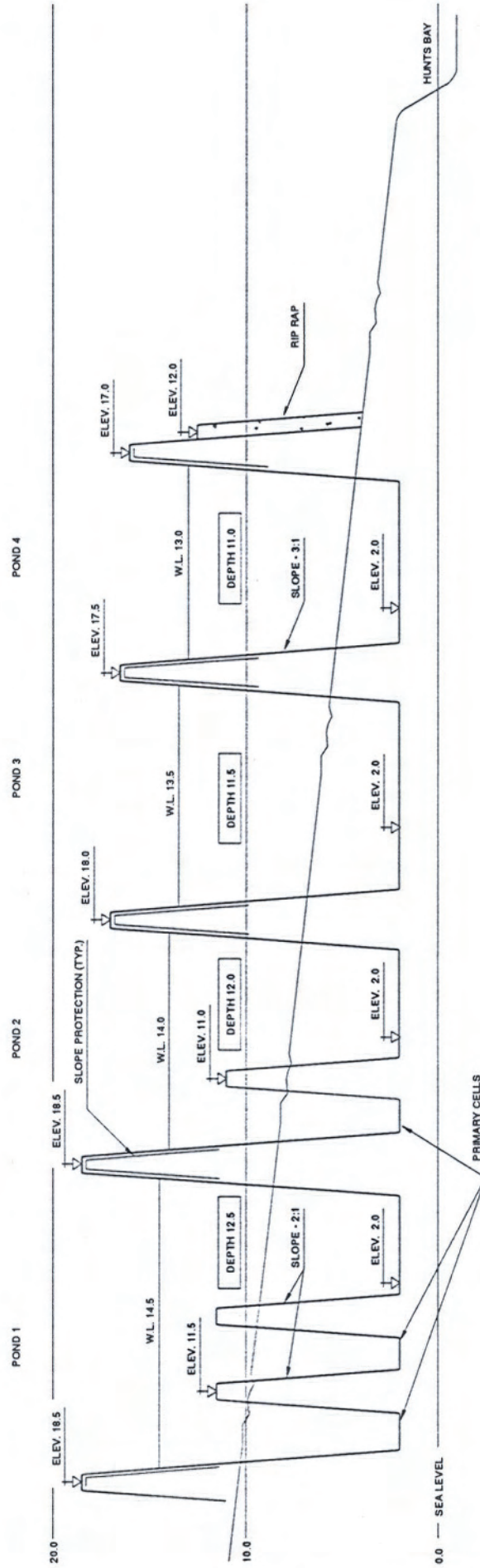
**FIGURE XIII.4**  
KINGSTON HARBOUR ENVIRONMENTAL PROJECT  
**Lagoon Layout Plan**  
(for trial #2)





NOTE : POND SERIES 1 & SERIES 2 SIMILAR  
DIKE SLOPES ARE 3:1  
EXCEPT PRIMARY CELLS 2:1  
NOT TO SCALE

**FIGURE XIII.5**  
KINGSTON HARBOUR ENVIRONMENTAL PROJECT  
Typical Profile, Trial #2



NOTE: DIKE SLOPES ARE 3:1  
EXCEPT PRIMARY CELLS 2:1  
NOT TO SCALE

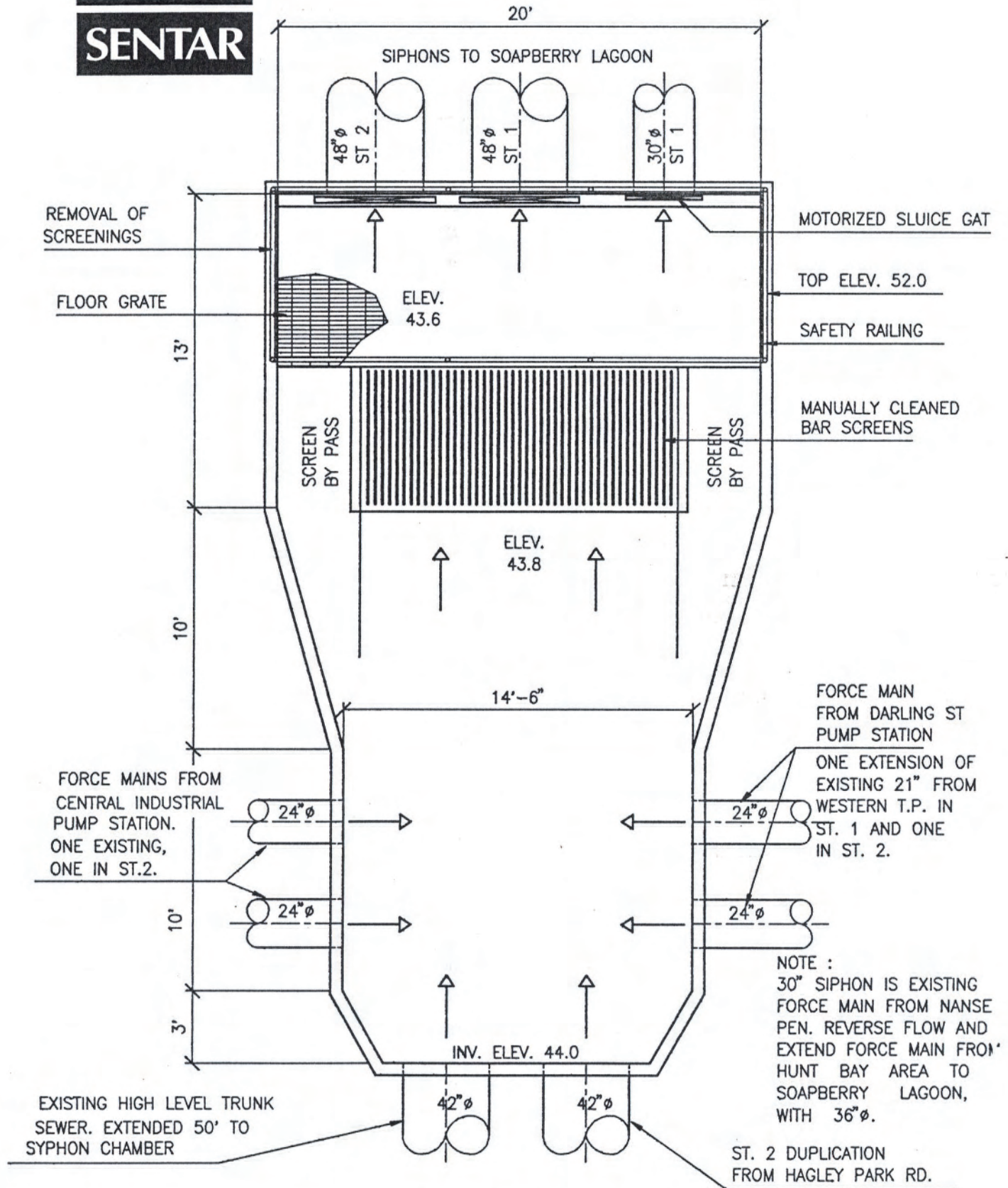
**FIGURE XIII.6**  
KINGSTON HARBOUR ENVIRONMENTAL PROJECT  
Lagoon Profile, Trial #3



ACAD F:\C9341\FIG207  
 \sentar\projects\XIII7.cdr R2



**SENTAR**

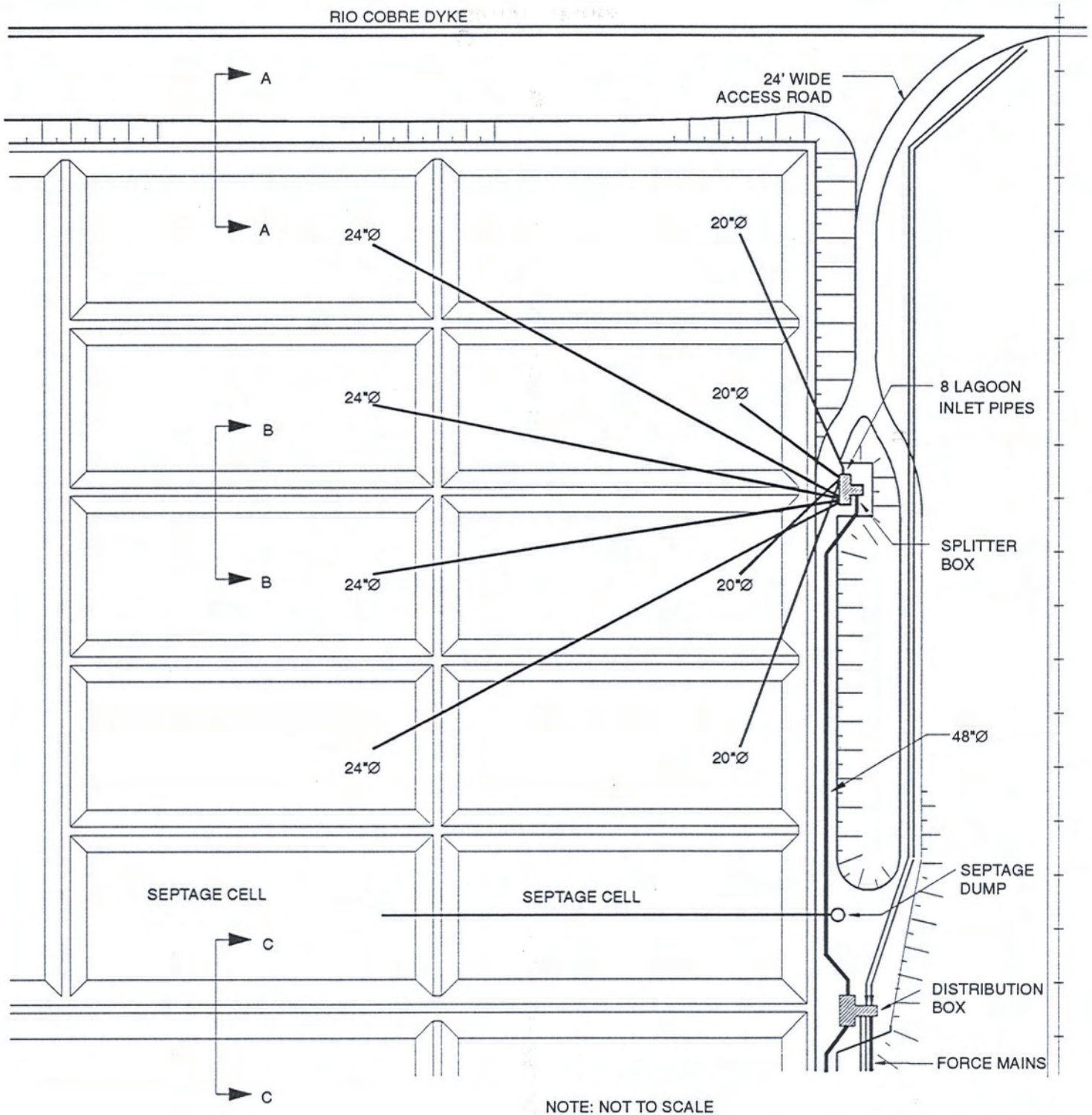


**FIGURE XIII.8**

KINGSTON HARBOUR ENVIRONMENTAL PROJECT

**Greenwich Transfer Station, Plan**



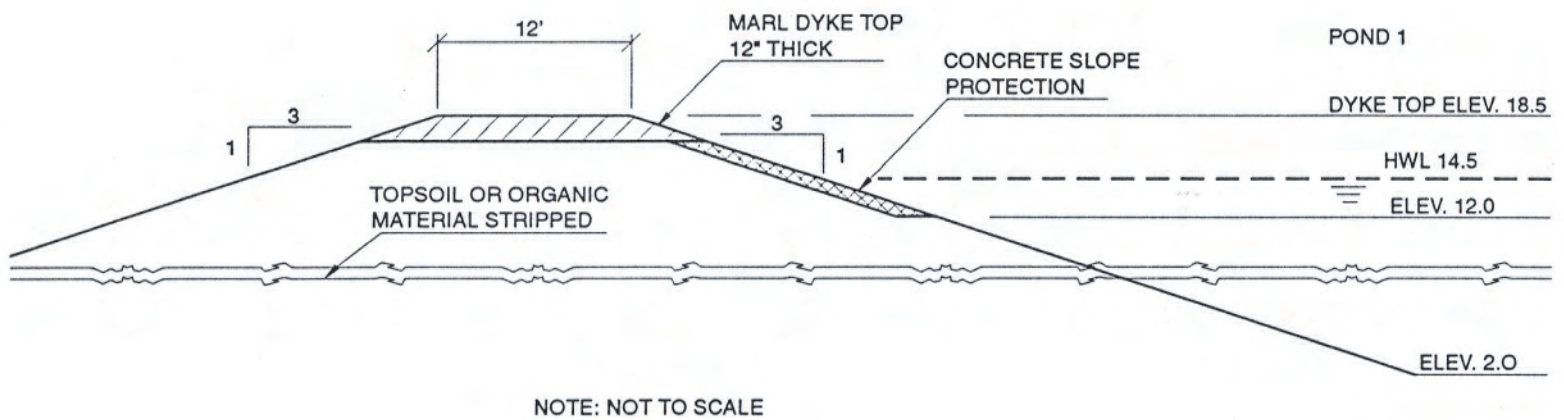


NOTE: NOT TO SCALE

### FIGURE XIII.9

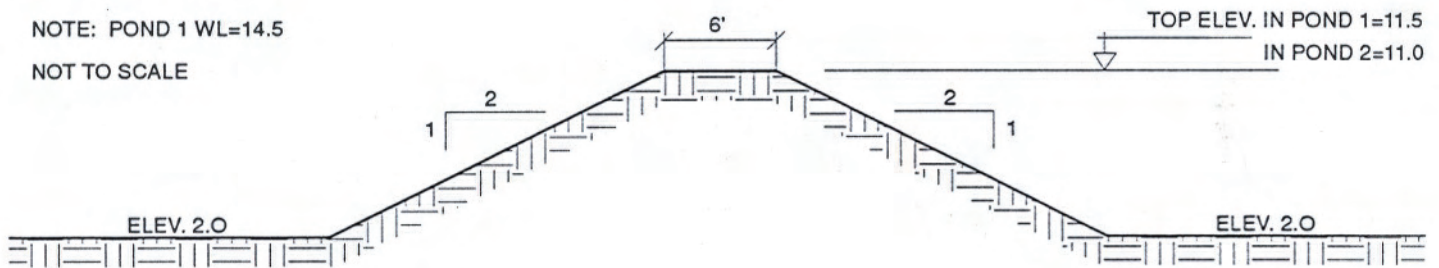
KINGSTON HARBOUR ENVIRONMENTAL PROJECT  
Stage 1 Lagoon Structure, Plan





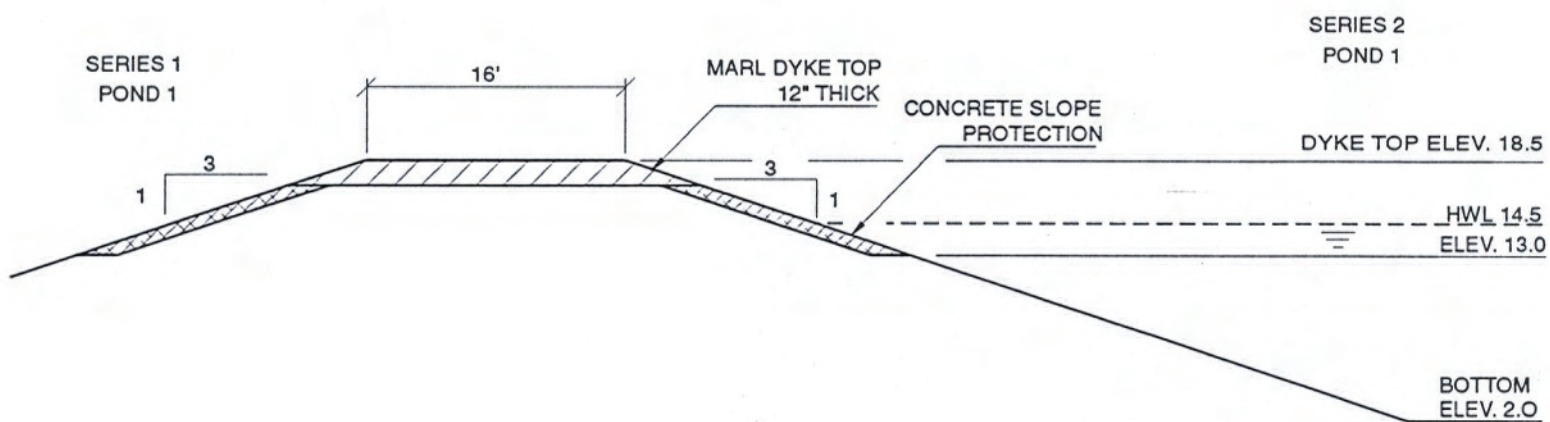
**FIGURE XIII.10**  
KINGSTON HARBOUR ENVIRONMENTAL PROJECT  
**Typical Dyke, Section A-A**





**FIGURE XIII.11**  
KINGSTON HARBOUR ENVIRONMENTAL PROJECT  
**Typical Dyke, Section B-B**

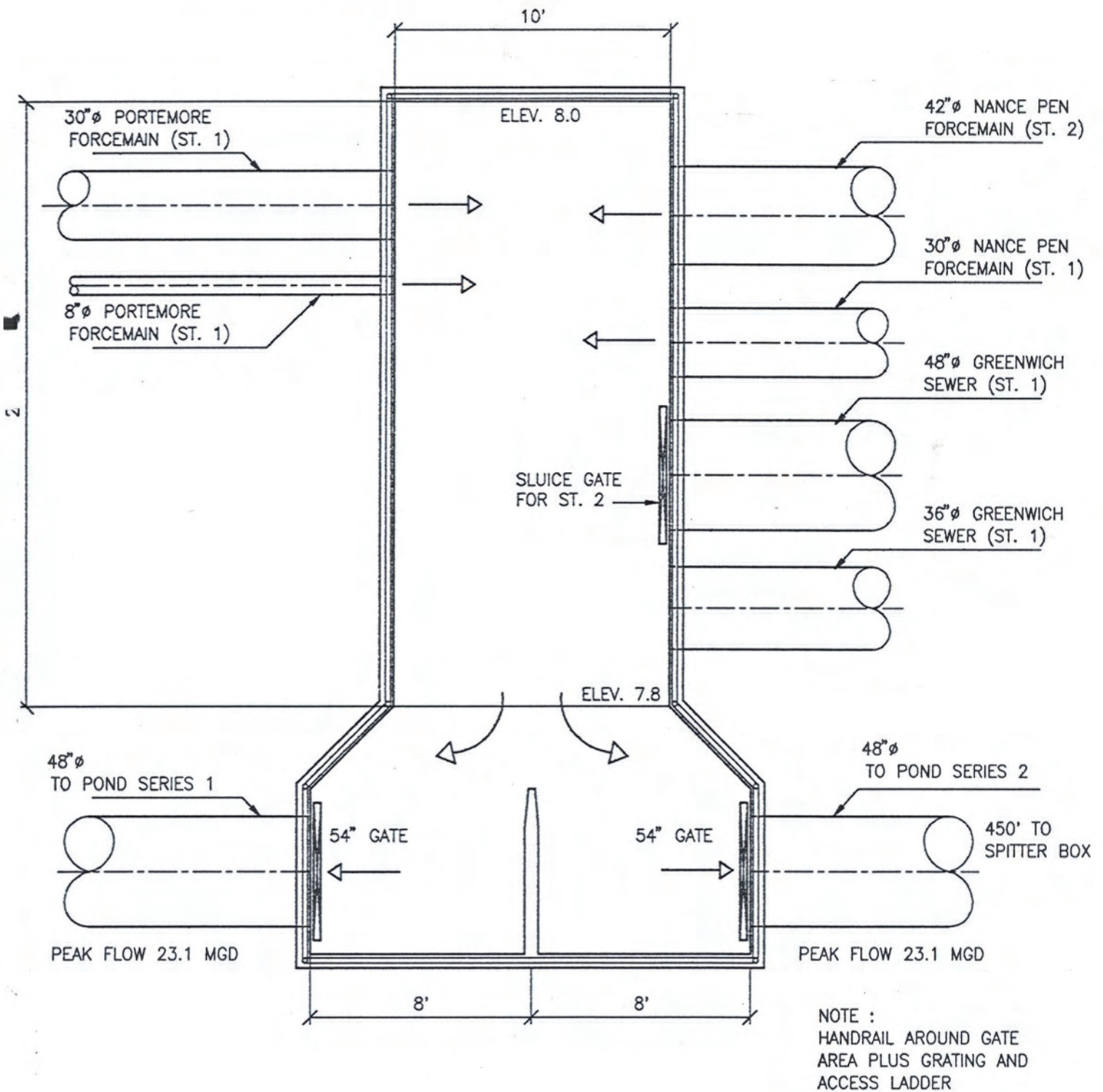




NOTE: 16' DYKE FOR ACCESS TO LAGOON  
STRUCTURE AND FOR POSSIBLE FUTURE PIPING  
NOT TO SCALE

**FIGURE XIII.12**  
KINGSTON HARBOUR ENVIRONMENTAL PROJECT  
**Typical Dyke, Section C-C**



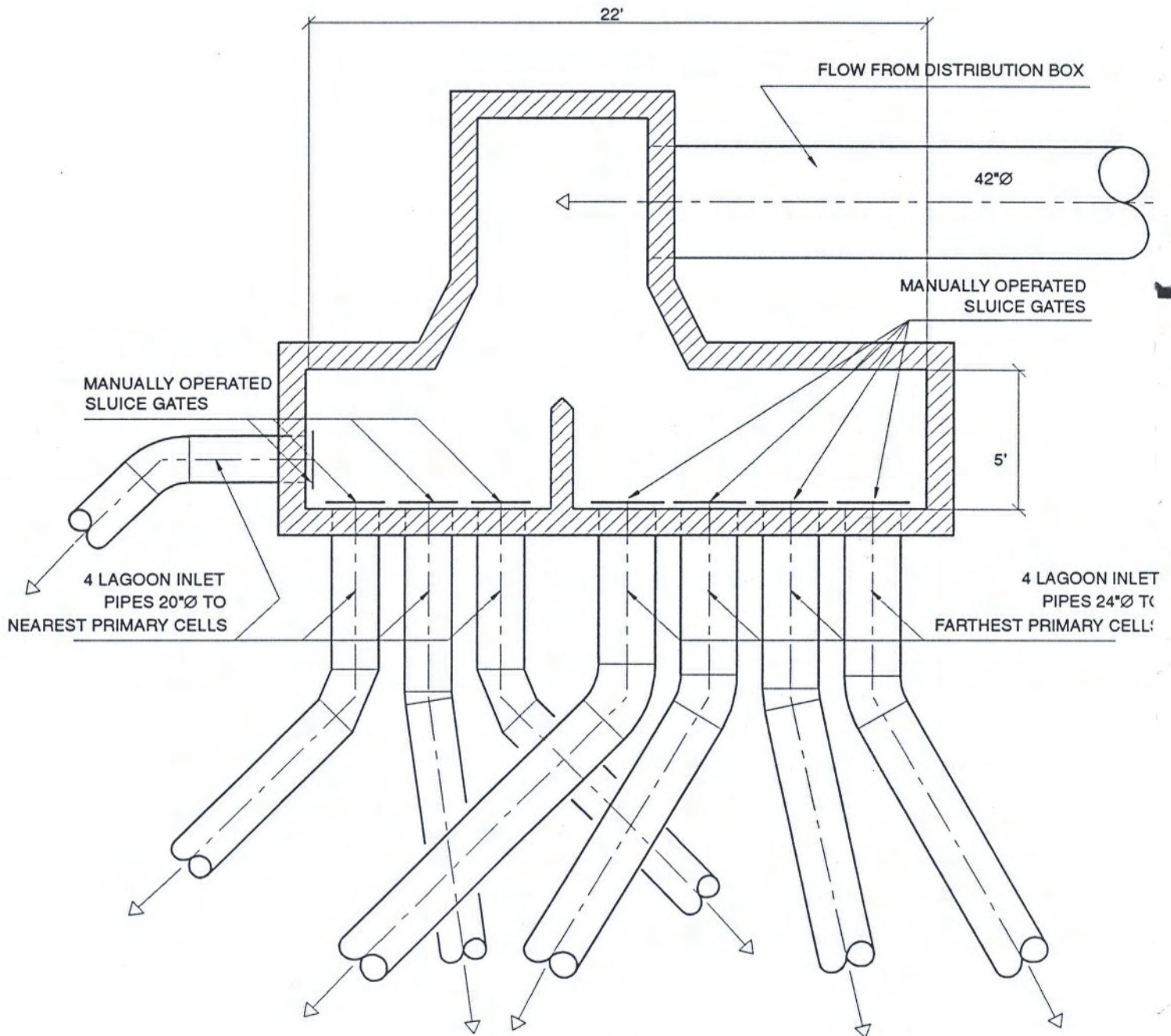


**FIGURE XIII.13**

KINGSTON HARBOUR ENVIRONMENTAL PROJECT

**Stage 1 - Distribution Structure, Plan**



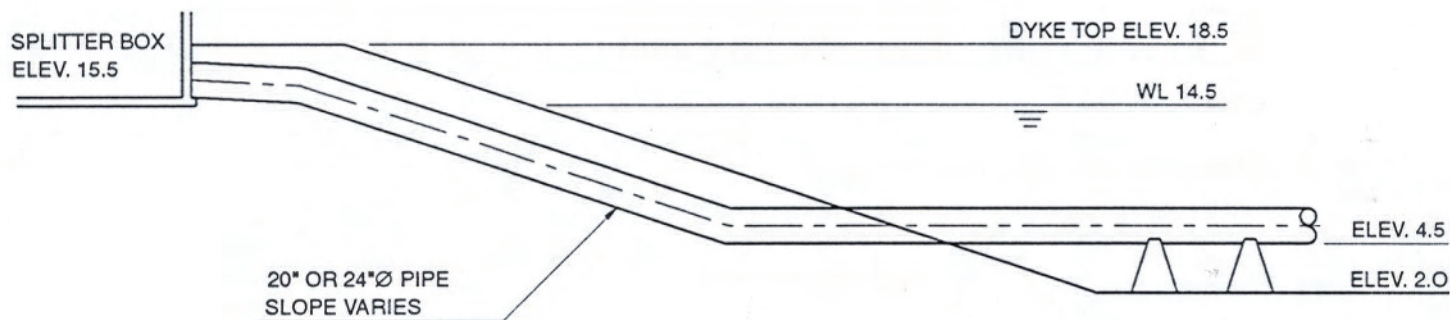


NOTE: NOT TO SCALE

**FIGURE XIII.14**

**KINGSTON HARBOUR ENVIRONMENTAL PROJECT  
Flow Splitter Box, Plan**



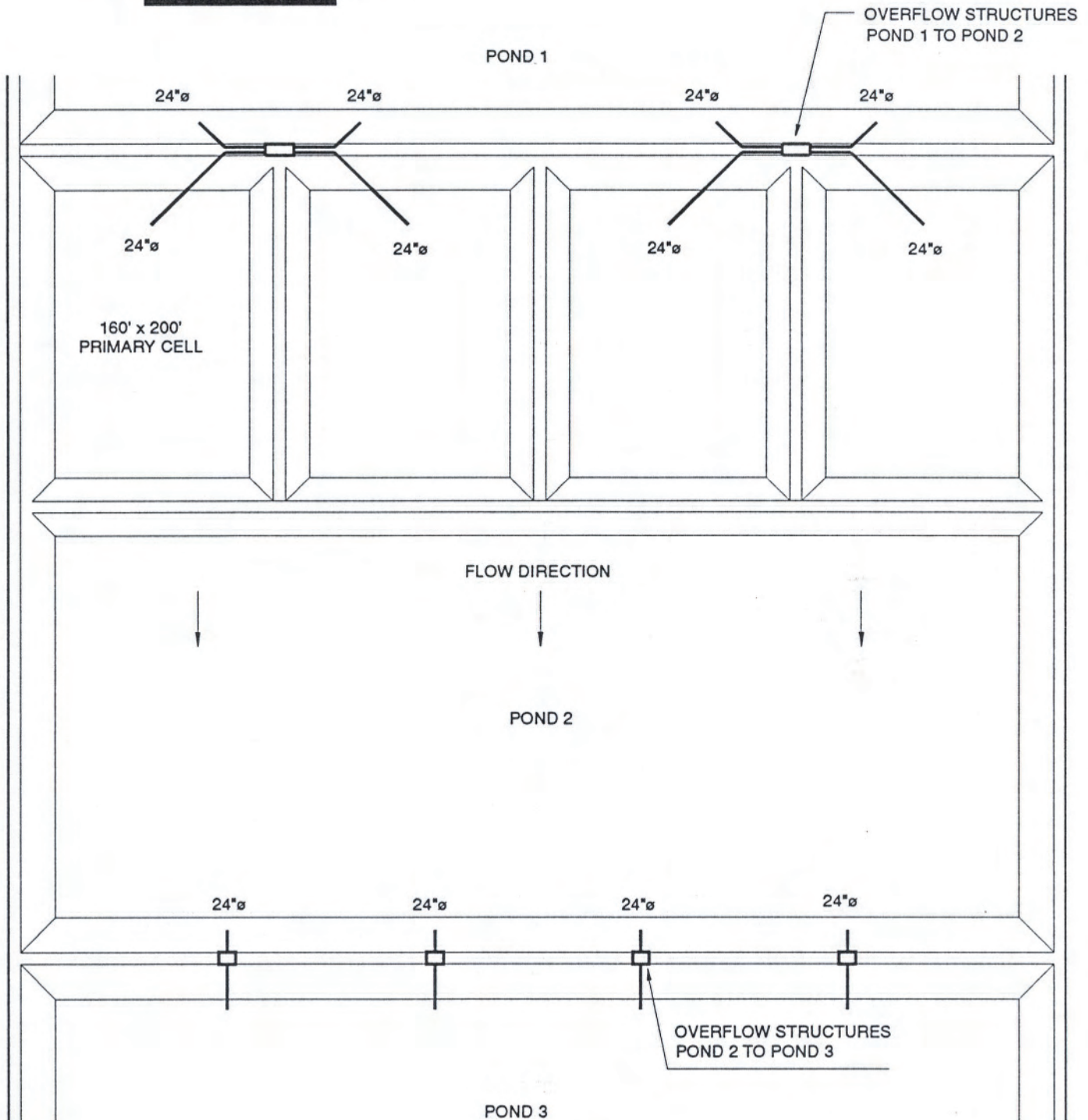


NOTE: NOT TO SCALE

**FIGURE XIII.15**  
KINGSTON HARBOUR ENVIRONMENTAL PROJECT  
**Typical Lagoon Inlet Pipe Section**



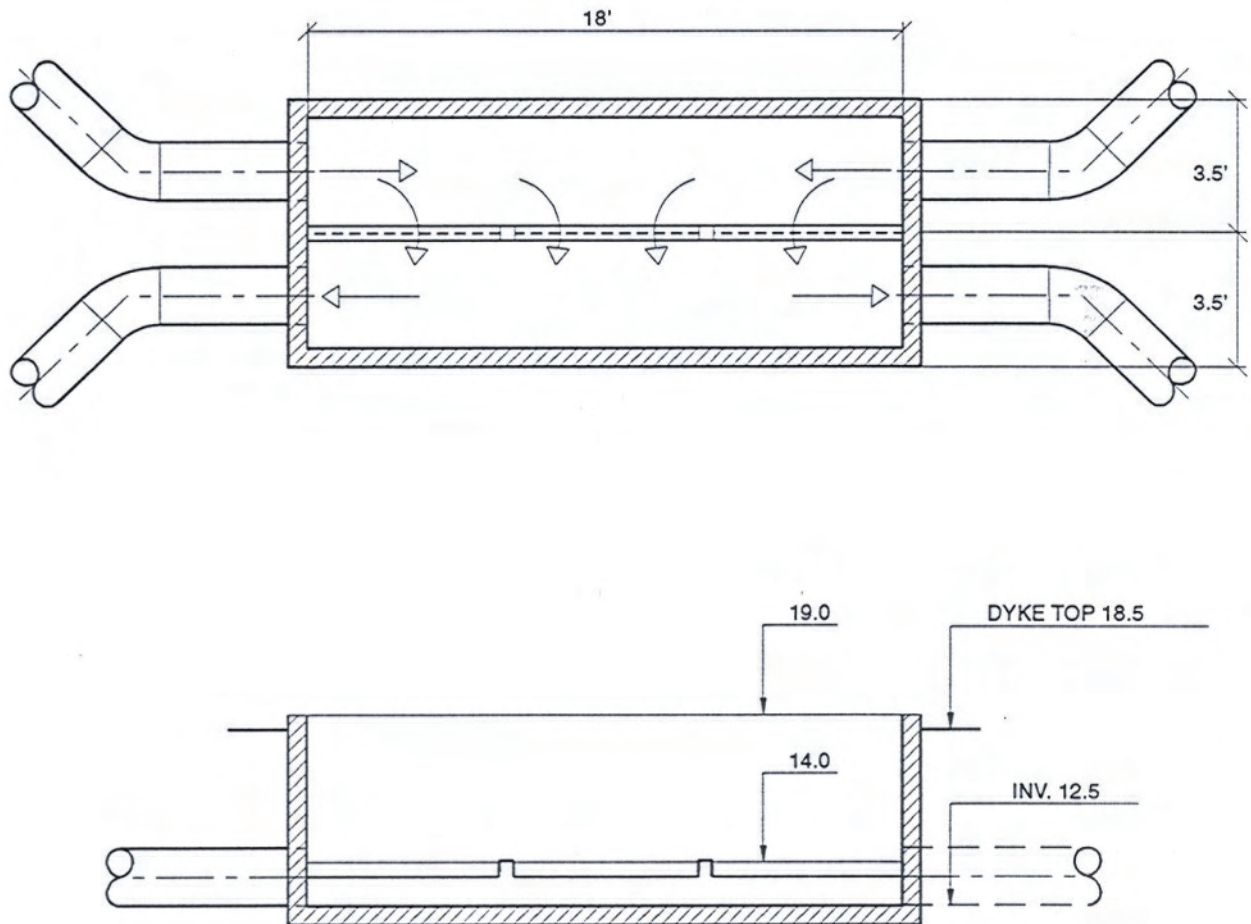
**SENTAR**



NOTE: NOT TO SCALE

**FIGURE XIII.16**

**KINGSTON HARBOUR ENVIRONMENTAL PROJECT**  
**Pond Overflows, Plan**

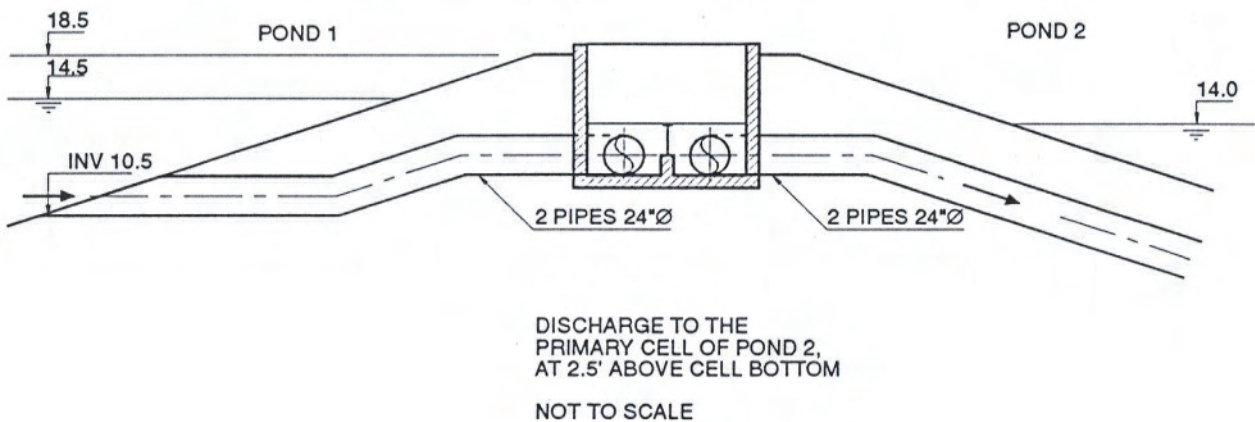


NOTE: NOT TO SCALE

**FIGURE XIII.17**

**KINGSTON HARBOUR ENVIRONMENTAL PROJECT**  
**Overflow Structures, Pond 1 to Pond 2**

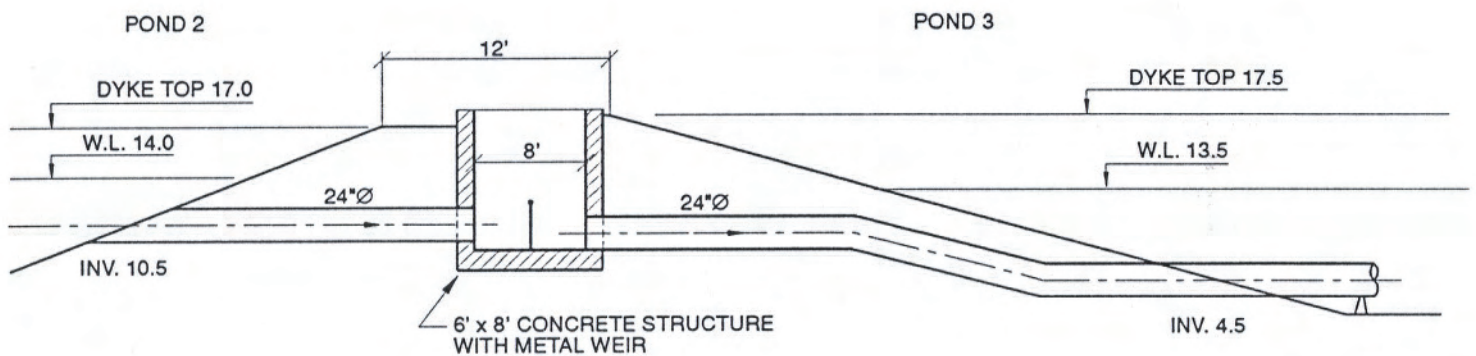




**FIGURE XIII.18**

KINGSTON HARBOUR ENVIRONMENTAL PROJECT

**Overflow from Pond 1 to Pond 2, Section**



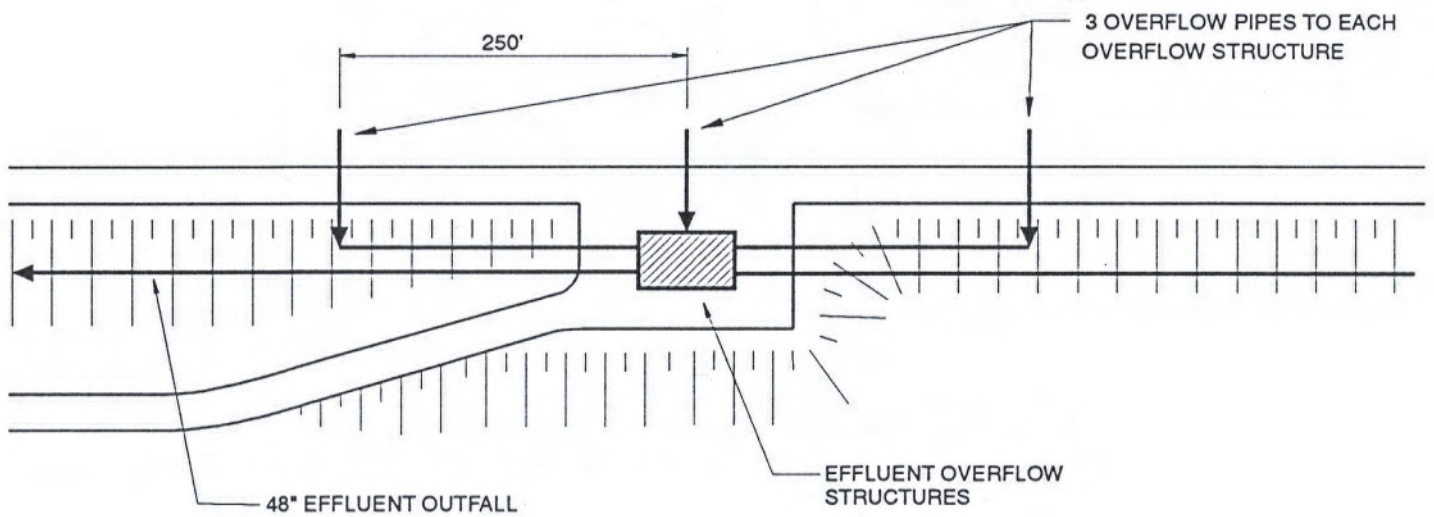
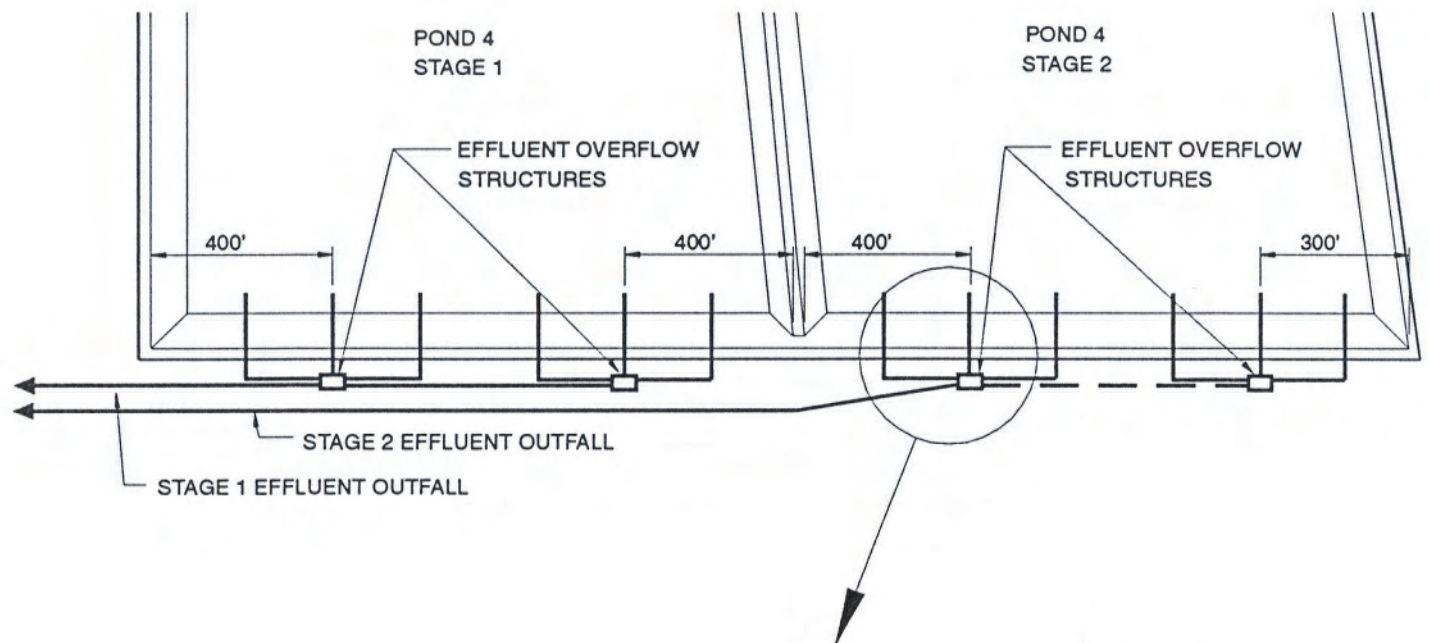
NOTE: OVERFLOW POND 3 TO POND 4 SIMILAR  
NOT TO SCALE

**FIGURE XIII.19**

KINGSTON HARBOUR ENVIRONMENTAL PROJECT

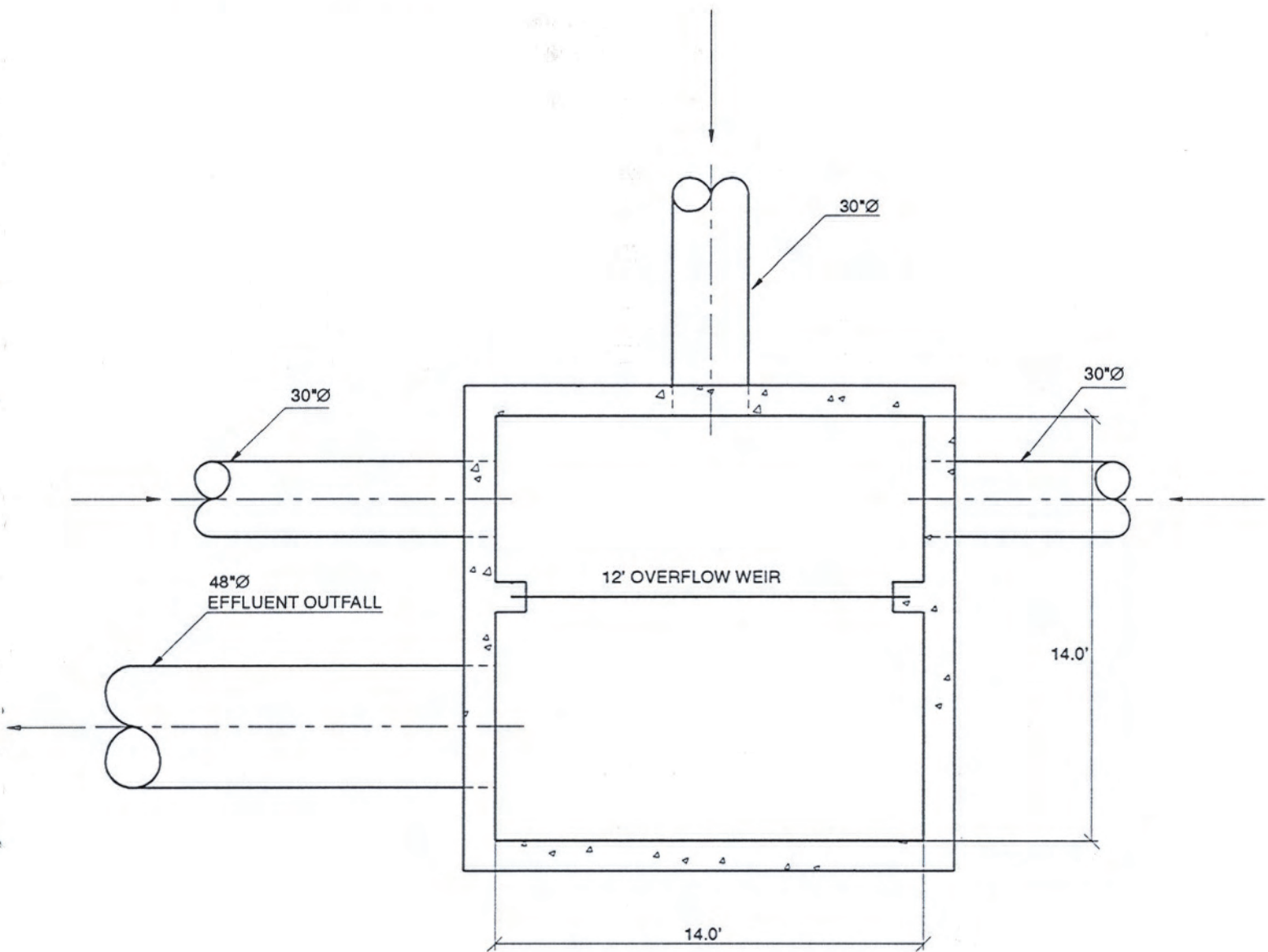
**Typical Overflow Structures  
Pond 2 to 3 and Pond 3 to 4**





NOTE: NOT TO SCALE

**FIGURE XIII.20**  
KINGSTON HARBOUR ENVIRONMENTAL PROJECT  
**Effluent Overflow Locations, Plan**

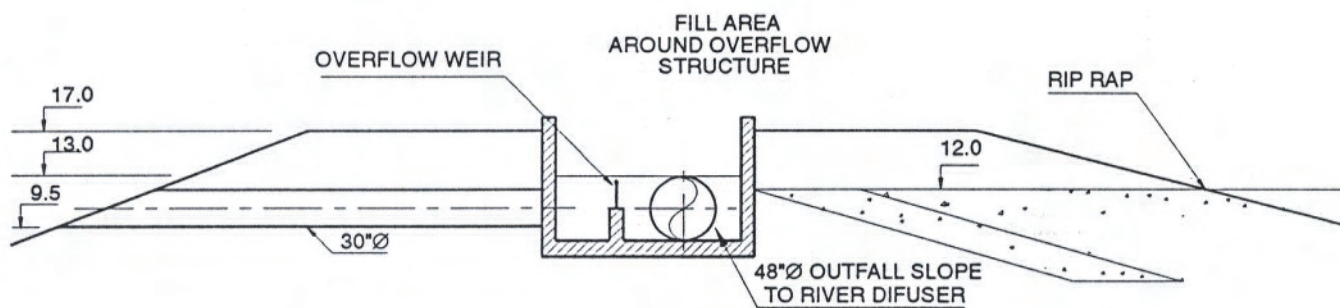


NOTE: NOT TO SCALE

**FIGURE XIII.21**

**KINGSTON HARBOUR ENVIRONMENTAL PROJECT**  
**Effluent Overflow Structure, Plan**

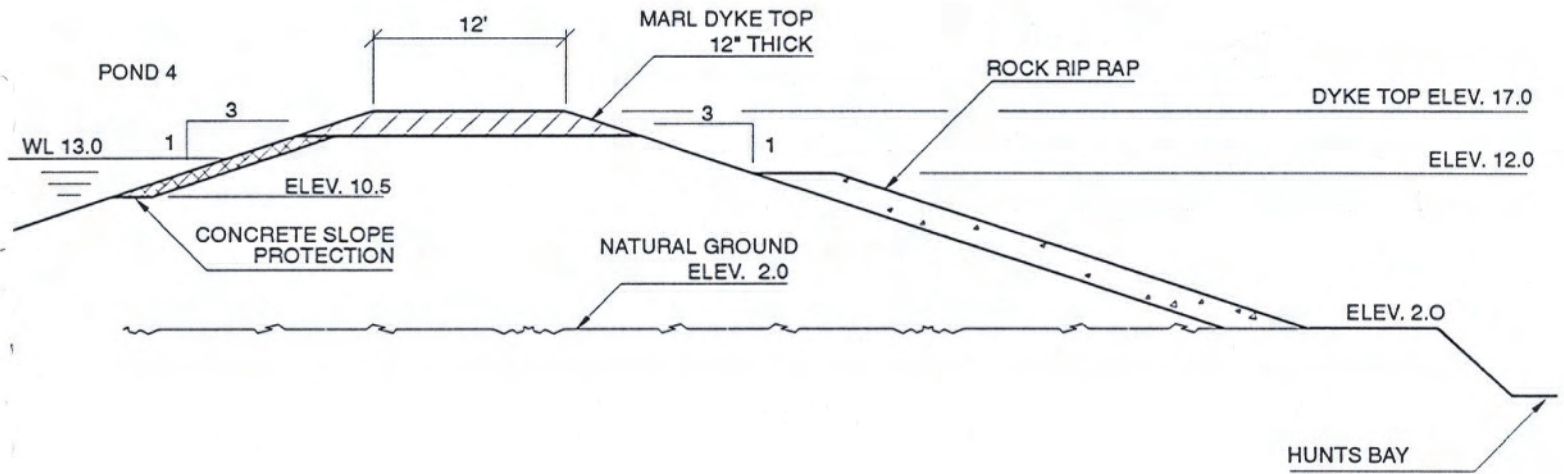




NOTE: NOT TO SCALE

**FIGURE XIII.22**

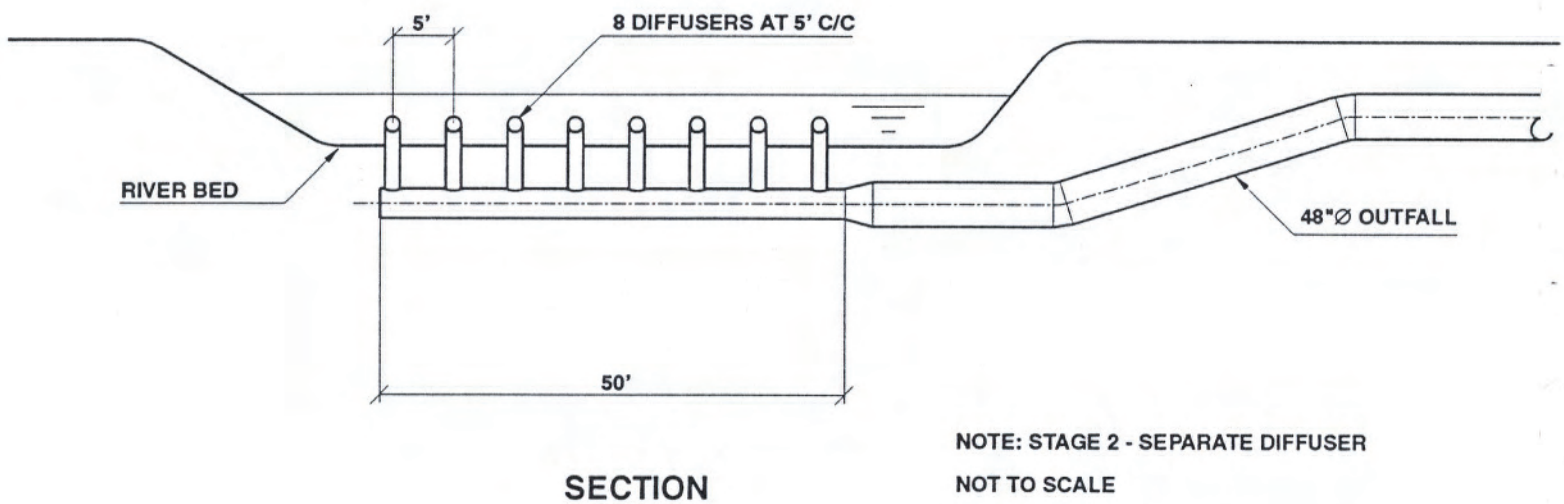
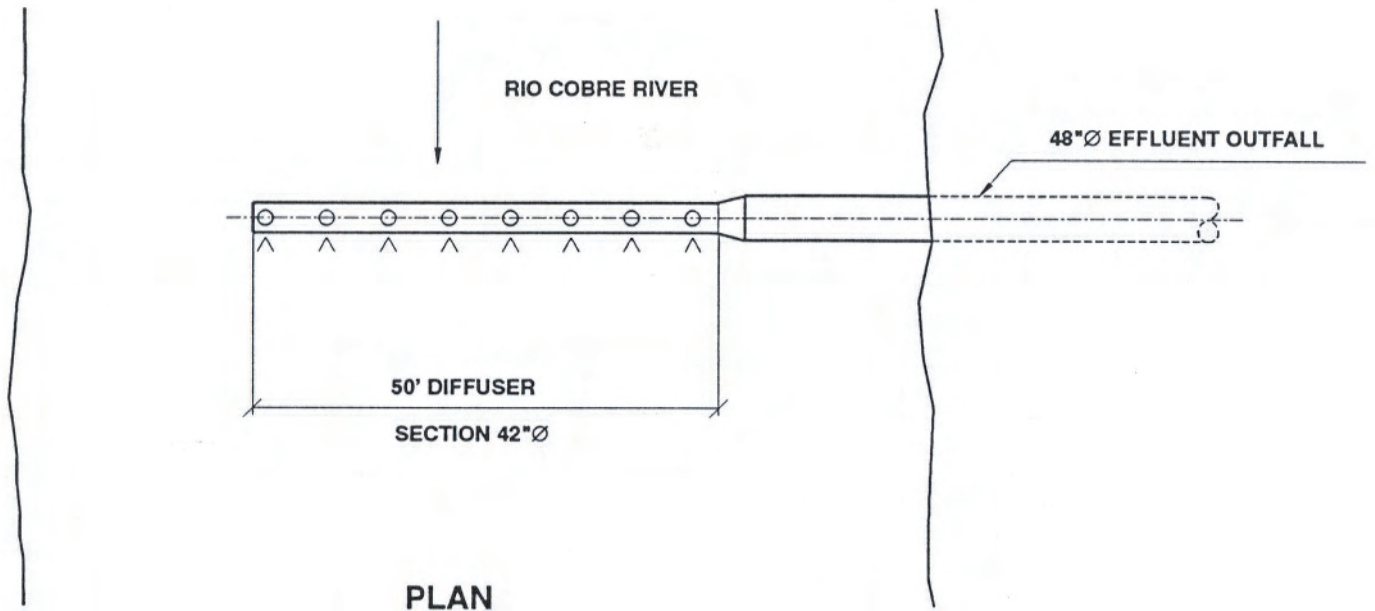
**KINGSTON HARBOUR ENVIRONMENTAL PROJECT**  
**Effluent Overflow Structure, Section**



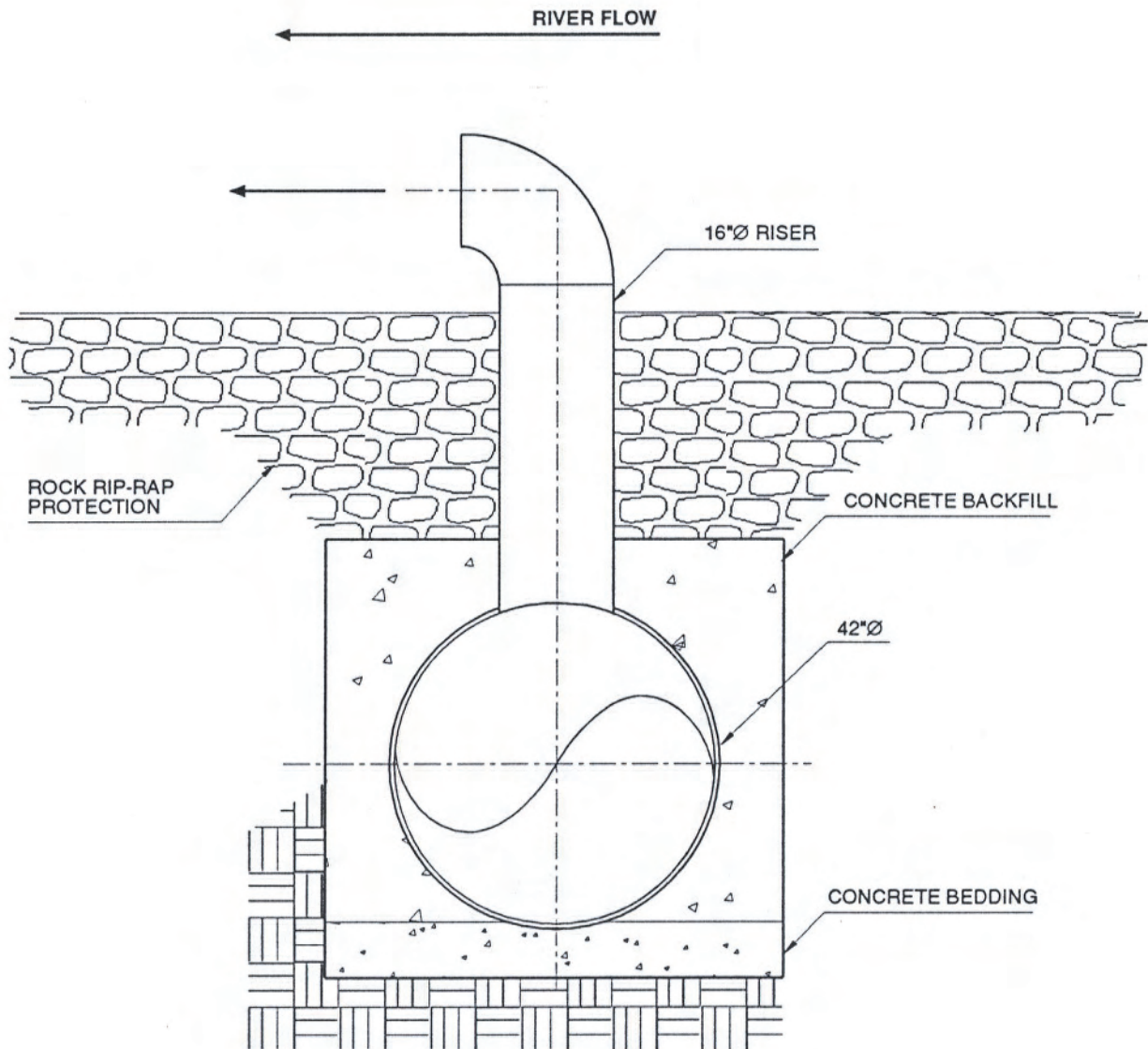
NOTE: NOT TO SCALE

**FIGURE XIII.23**  
 KINGSTON HARBOUR ENVIRONMENTAL PROJECT  
**Typical Dyke, Along Hunts Bay**





**FIGURE XIII.24**  
KINGSTON HARBOUR ENVIRONMENTAL PROJECT  
Effluent Diffuser, Plan & Section



**FIGURE XIII.25**

**KINGSTON HARBOUR ENVIRONMENTAL PROJECT**  
**Typical Diffuser Riser, Section**