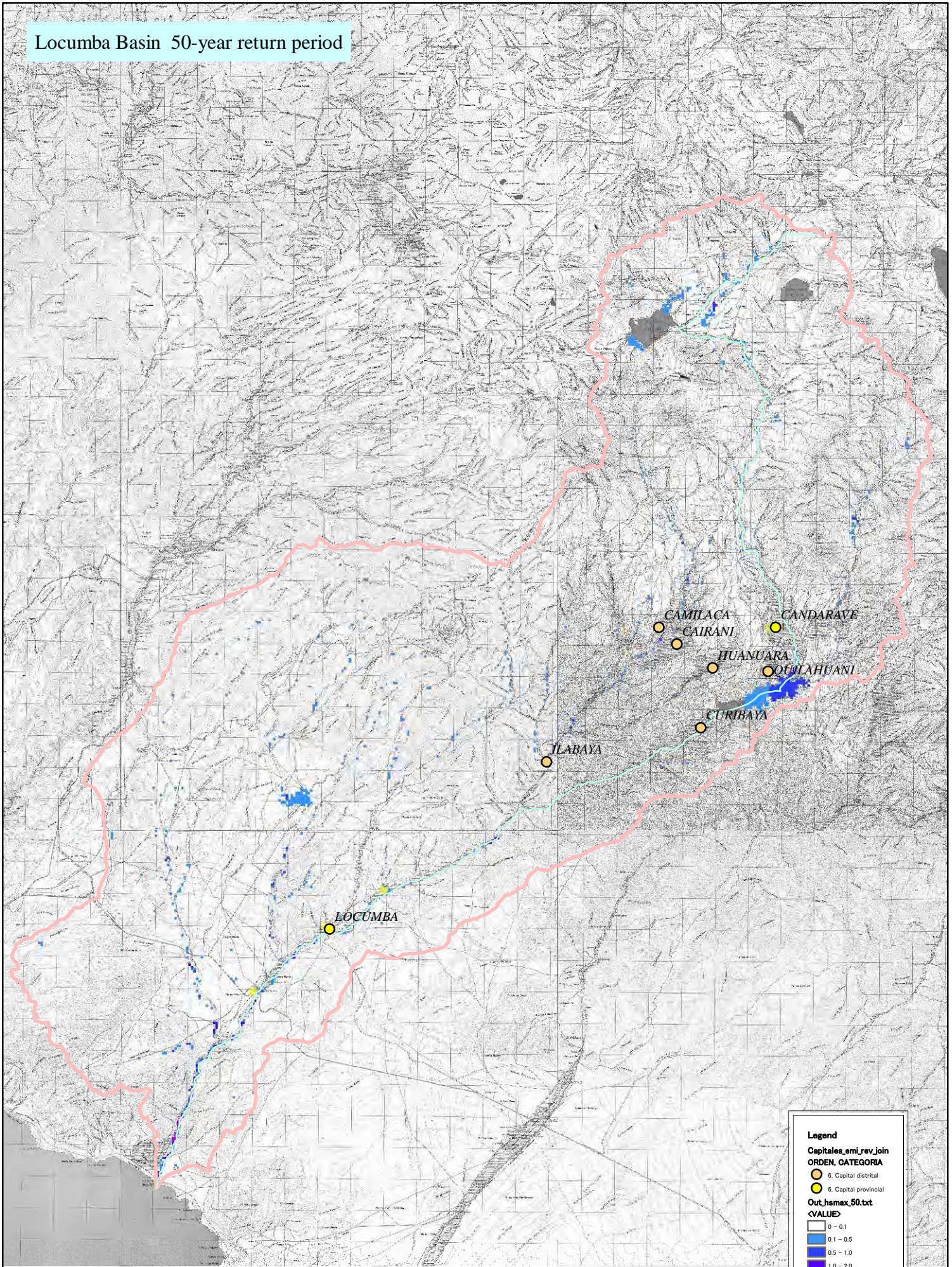


Apéndice-4-2

Resultados del Análisis de Inundación- Escorrentía (Locumba)

Locumba Basin 50-year return period



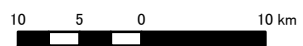
Legend

Capitales_emi_rev_join
ORDEN, CATEGORIA

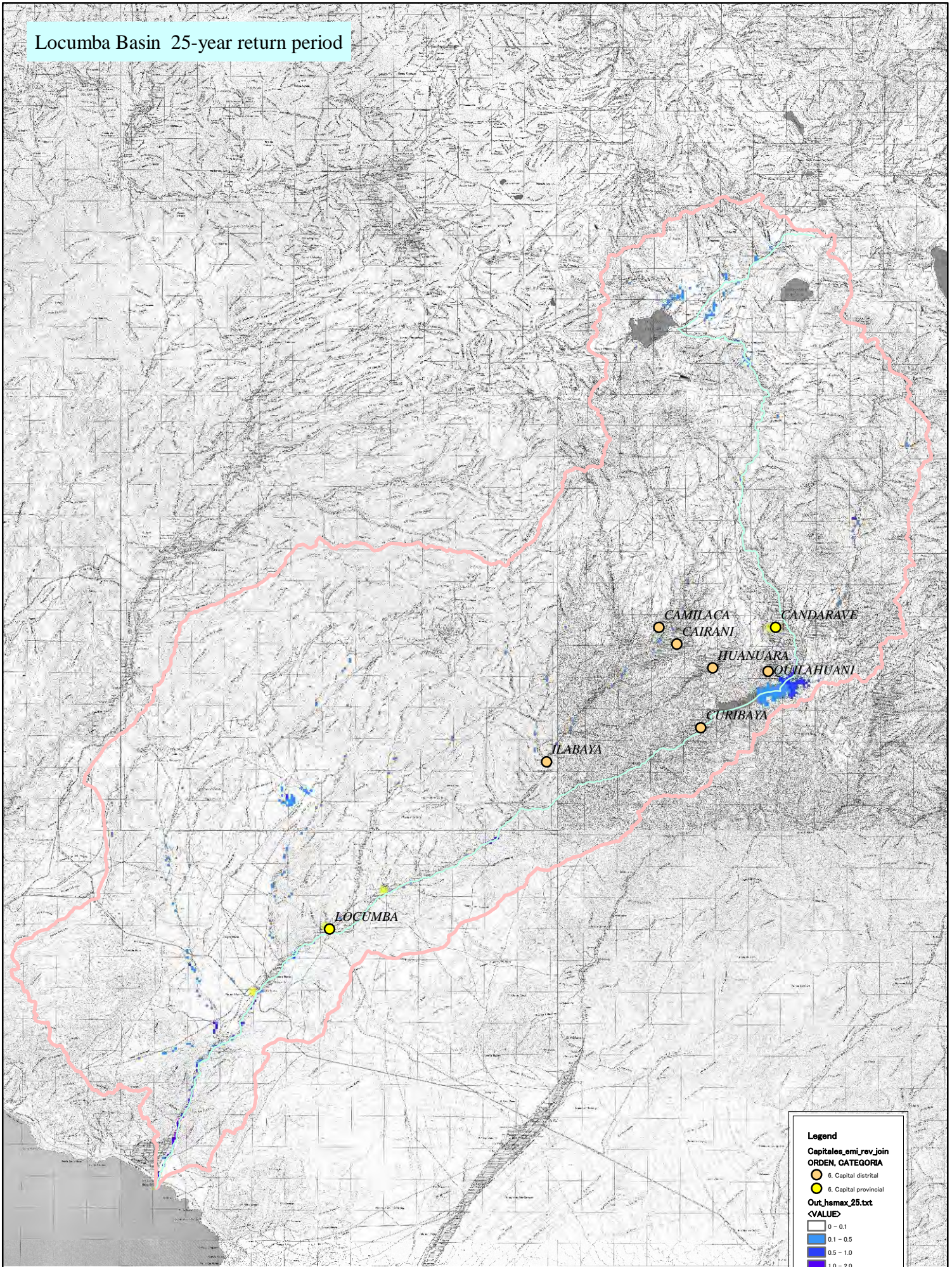
- 6, Capital distrital
- 6, Capital provincial

Out_hsmex_50.txt
<VALUE>

0 - 0.1
0.1 - 0.5
0.5 - 1.0
1.0 - 2.0
2.0 - 3.0
3.0 -



Locumba Basin 25-year return period



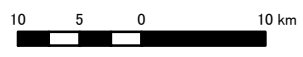
Legend

Capitales_emi_rev_join
ORDEN, CATEGORIA

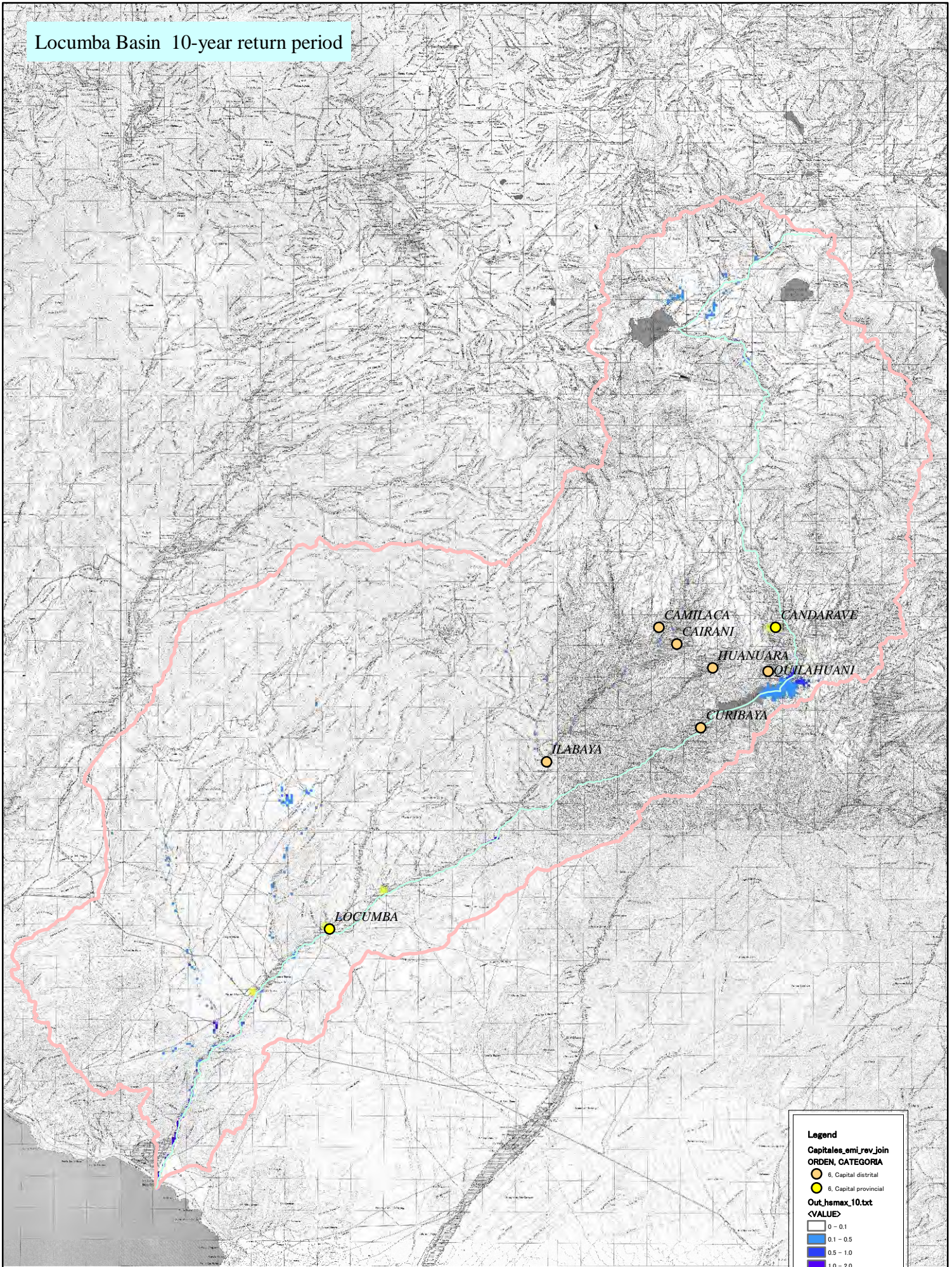
- 6, Capital distrital
- 6, Capital provincial

Out_hamax_25.txt
<VALUE>

0 - 0.1
0.1 - 0.5
0.5 - 1.0
1.0 - 2.0
2.0 - 3.0
3.0 -



Locumba Basin 10-year return period



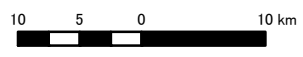
Legend

Capitales_emi_rev_join
ORDEN, CATEGORIA

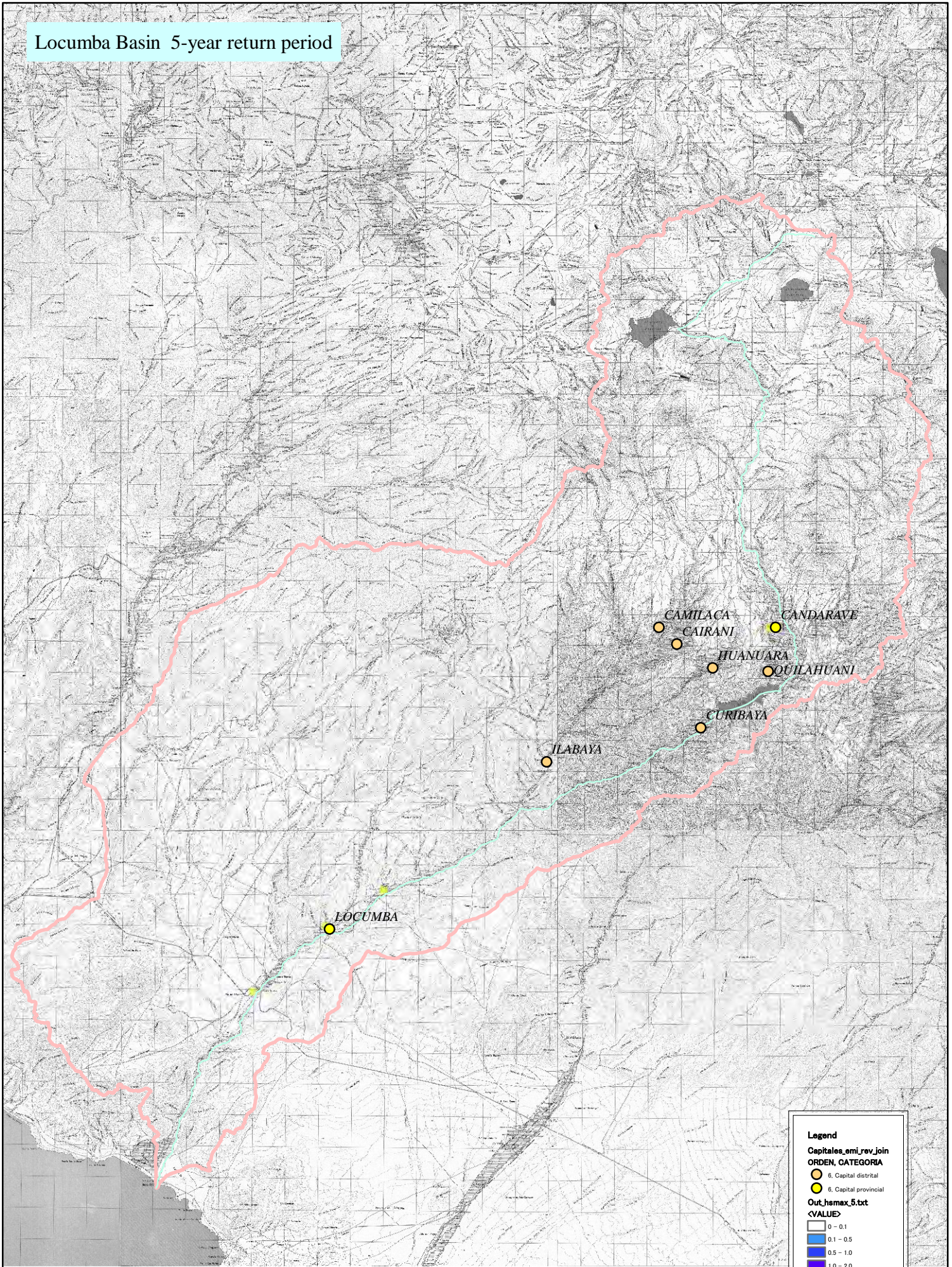
- 6, Capital distrital
- 6, Capital provincial

Out_hsmx_10.txt
<VALUE>

- 0 - 0.1
- 0.1 - 0.5
- 0.5 - 1.0
- 1.0 - 2.0
- 2.0 - 3.0
- 3.0 -



Locumba Basin 5-year return period



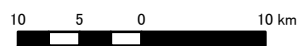
Legend

Capitales_emi_rev_join
ORDEN, CATEGORIA

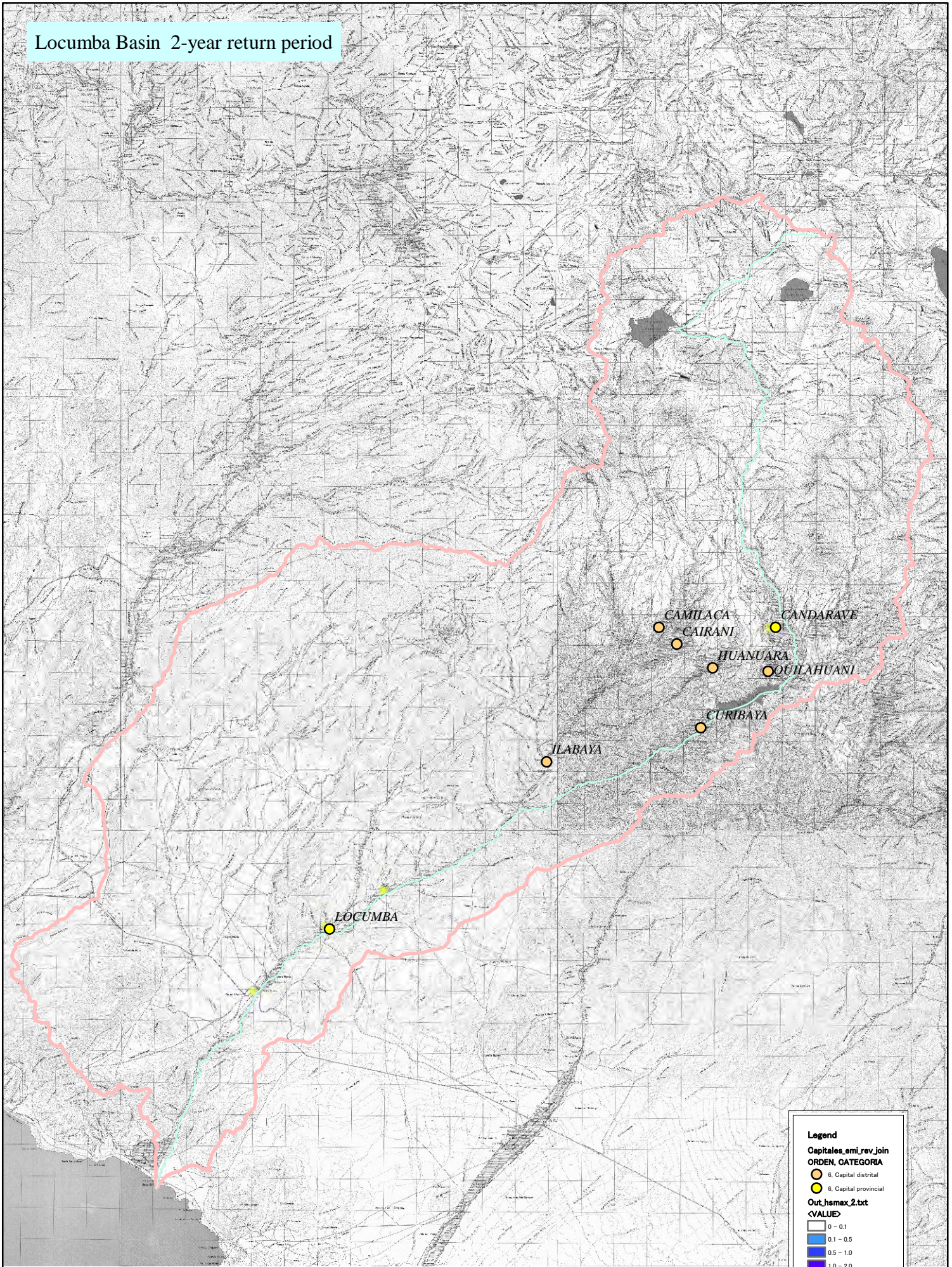
- 6, Capital distrital
- 6, Capital provincial

Out_hsmx_5.txt
<VALUE>

- 0 - 0.1
- 0.1 - 0.5
- 0.5 - 1.0
- 1.0 - 2.0
- 2.0 - 3.0
- 3.0 -



Locumba Basin 2-year return period



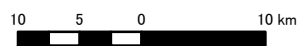
Legend

Capitales_emi_rev_join
ORDEN, CATEGORIA

- 6, Capital distrital
- 6, Capital provincial

Out_hsmx_2.txt
<VALUE>

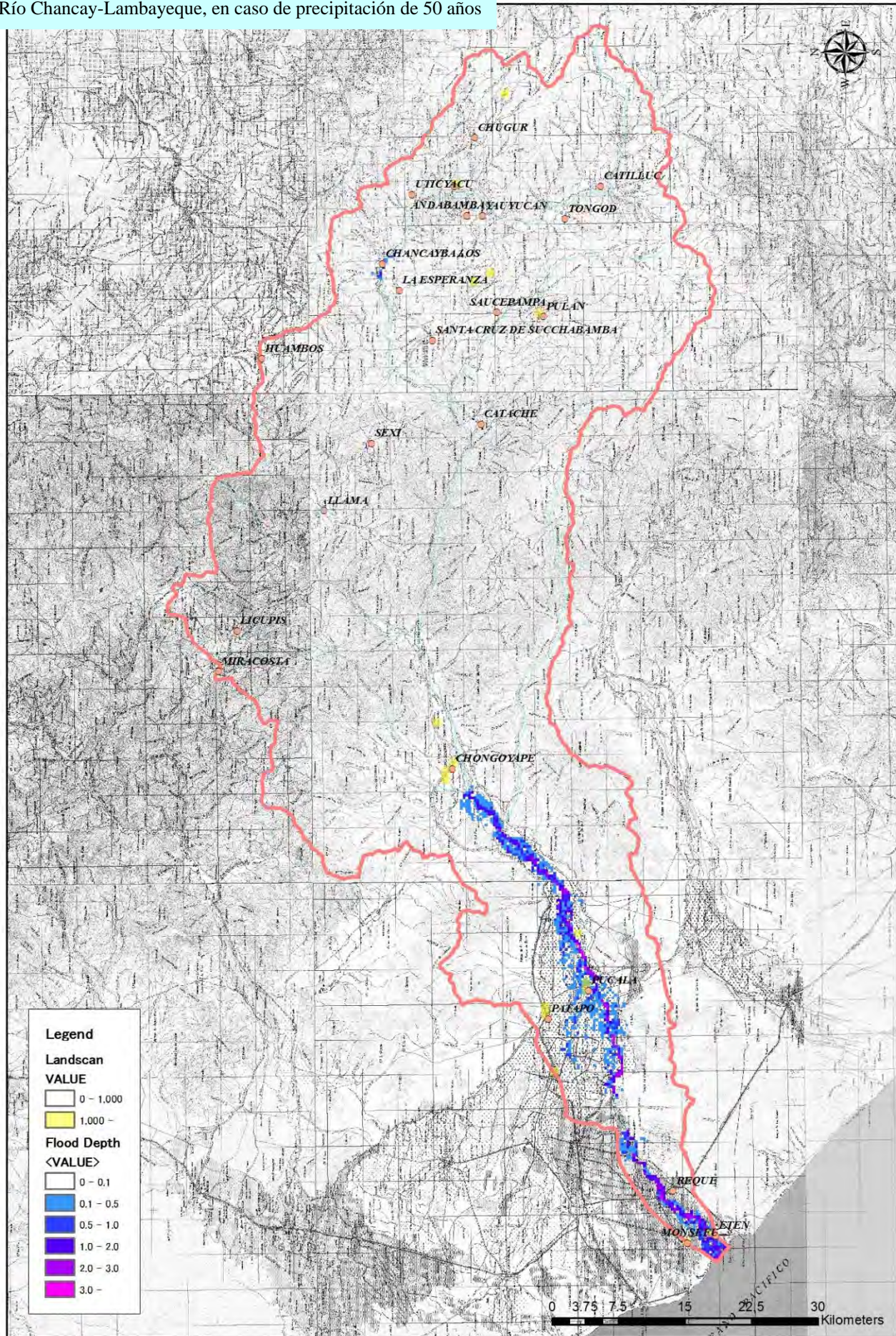
- 0 - 0.1
- 0.1 - 0.5
- 0.5 - 1.0
- 1.0 - 2.0
- 2.0 - 3.0
- 3.0 -



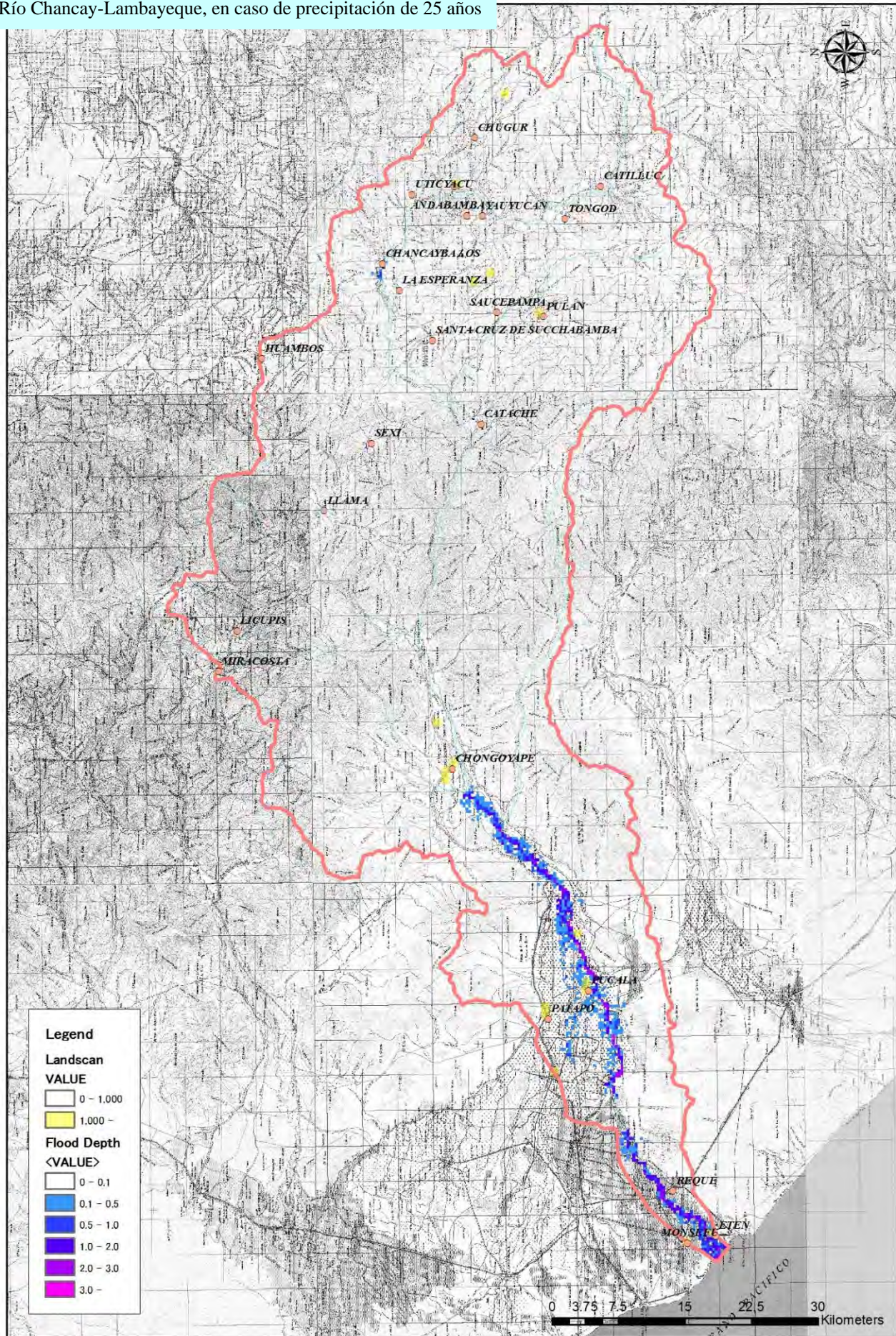
Apéndice-4-3

Resultados del Análisis de Inundación- Escorrentía (Chancay-Lambayeque)

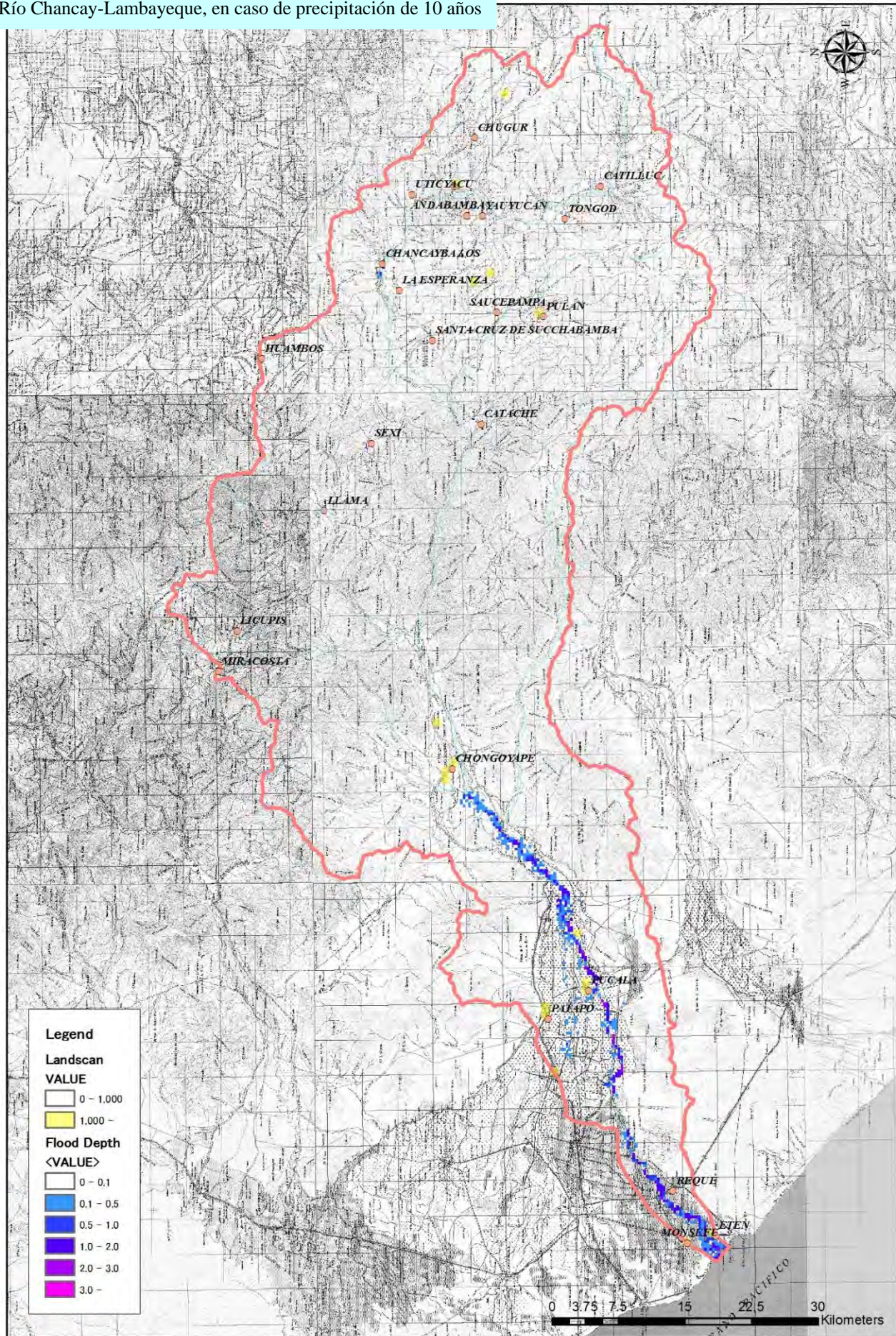
Río Chancay-Lambayeque, en caso de precipitación de 50 años



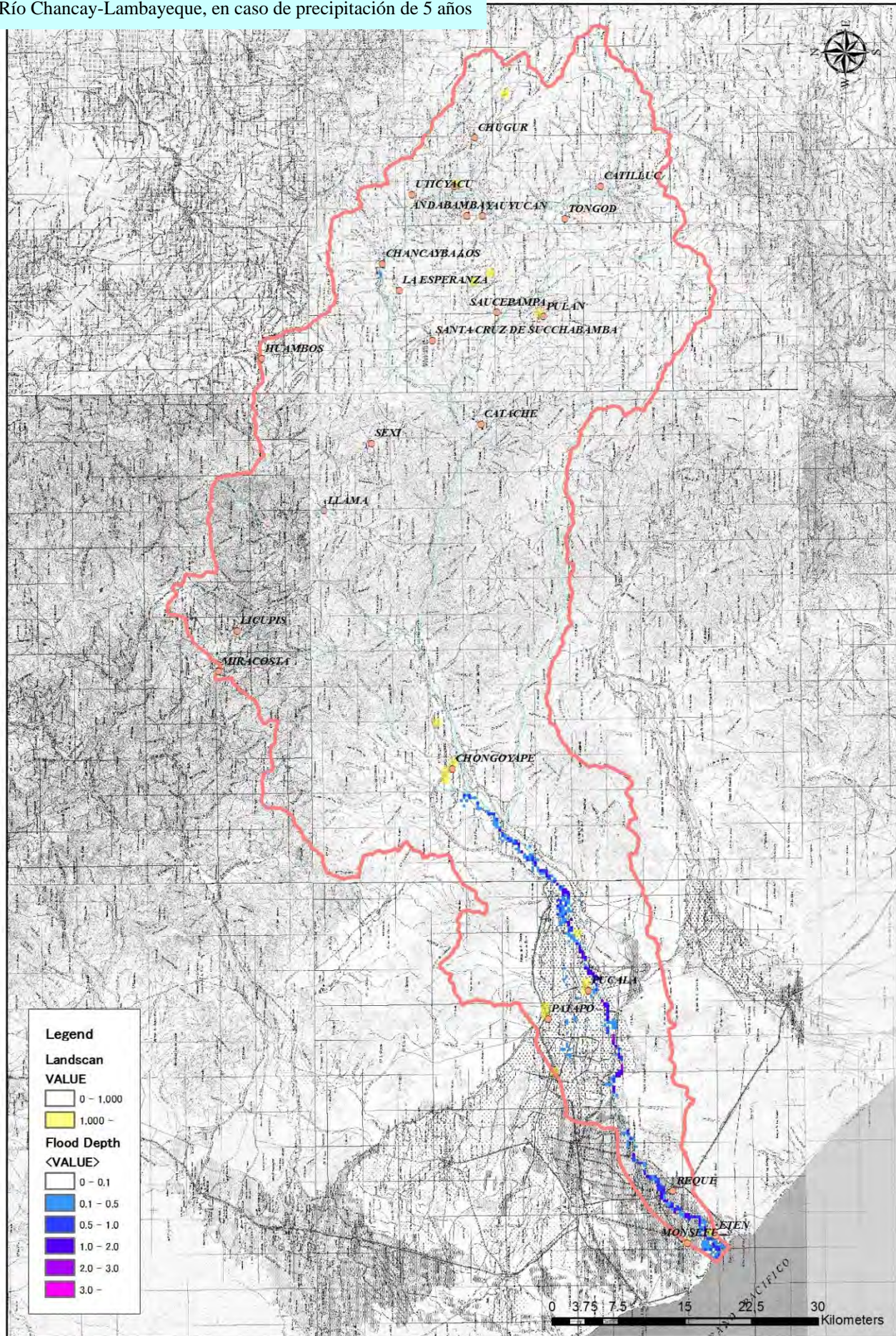
Río Chancay-Lambayeque, en caso de precipitación de 25 años



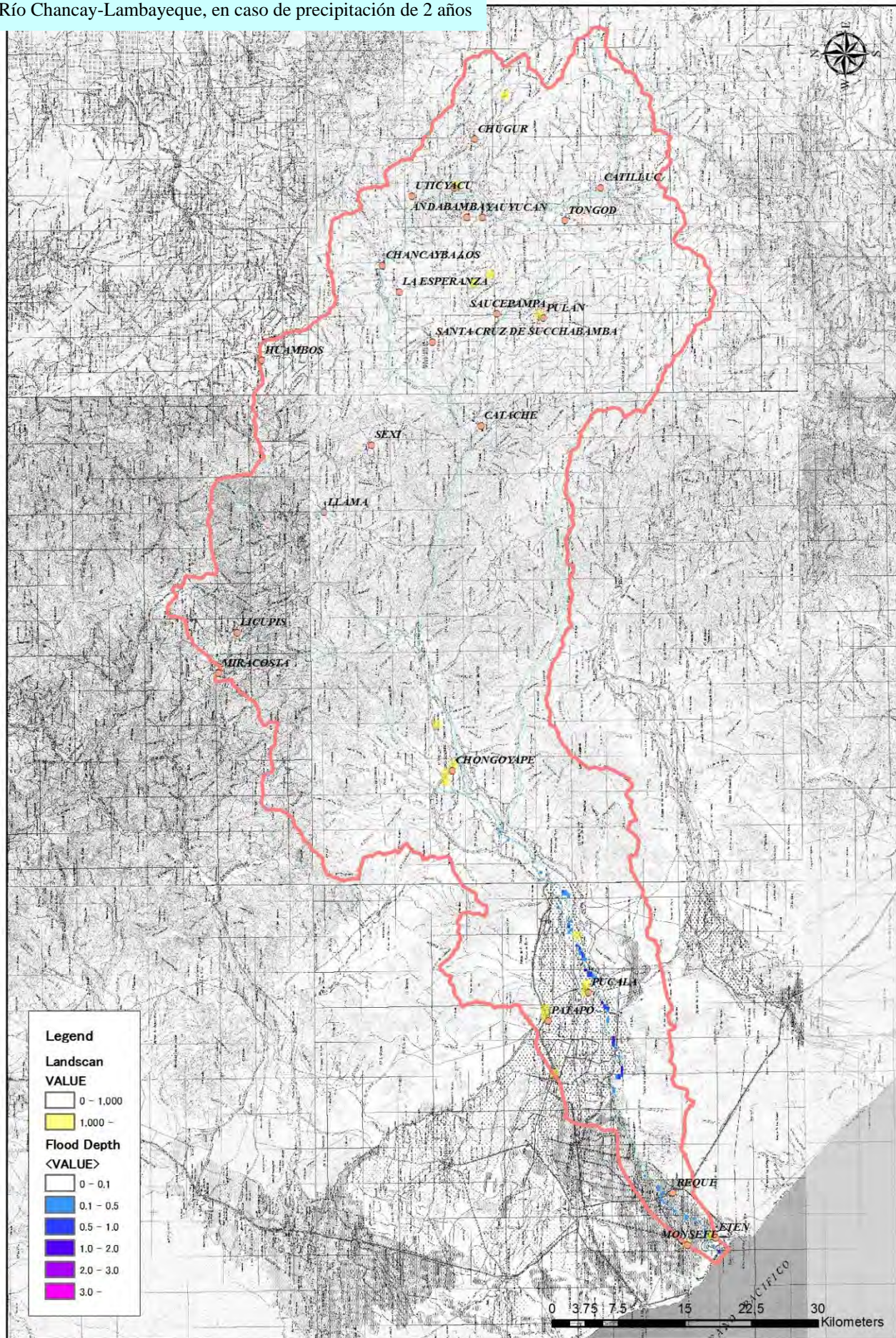
Río Chancay-Lambayeque, en caso de precipitación de 10 años



Río Chancay-Lambayeque, en caso de precipitación de 5 años



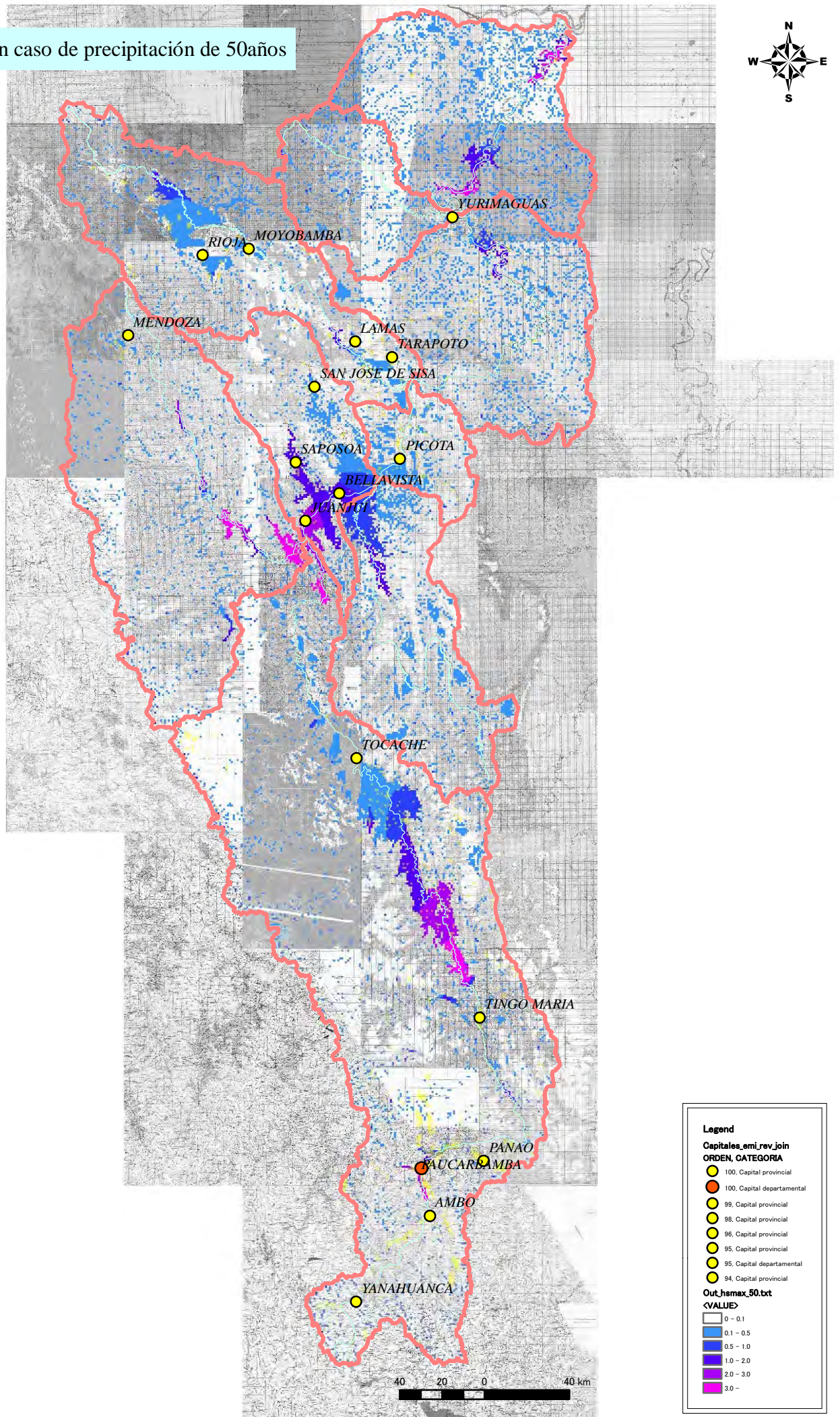
Río Chancay-Lambayeque, en caso de precipitación de 2 años



Apéndice-4-4

Resultados del Análisis de Inundación- Escorrentía (Huallaga)

Rio Huallaga, en caso de precipitación de 50años



Legend

Capitales_emi_rev_join

ORDEN, CATEGORIA

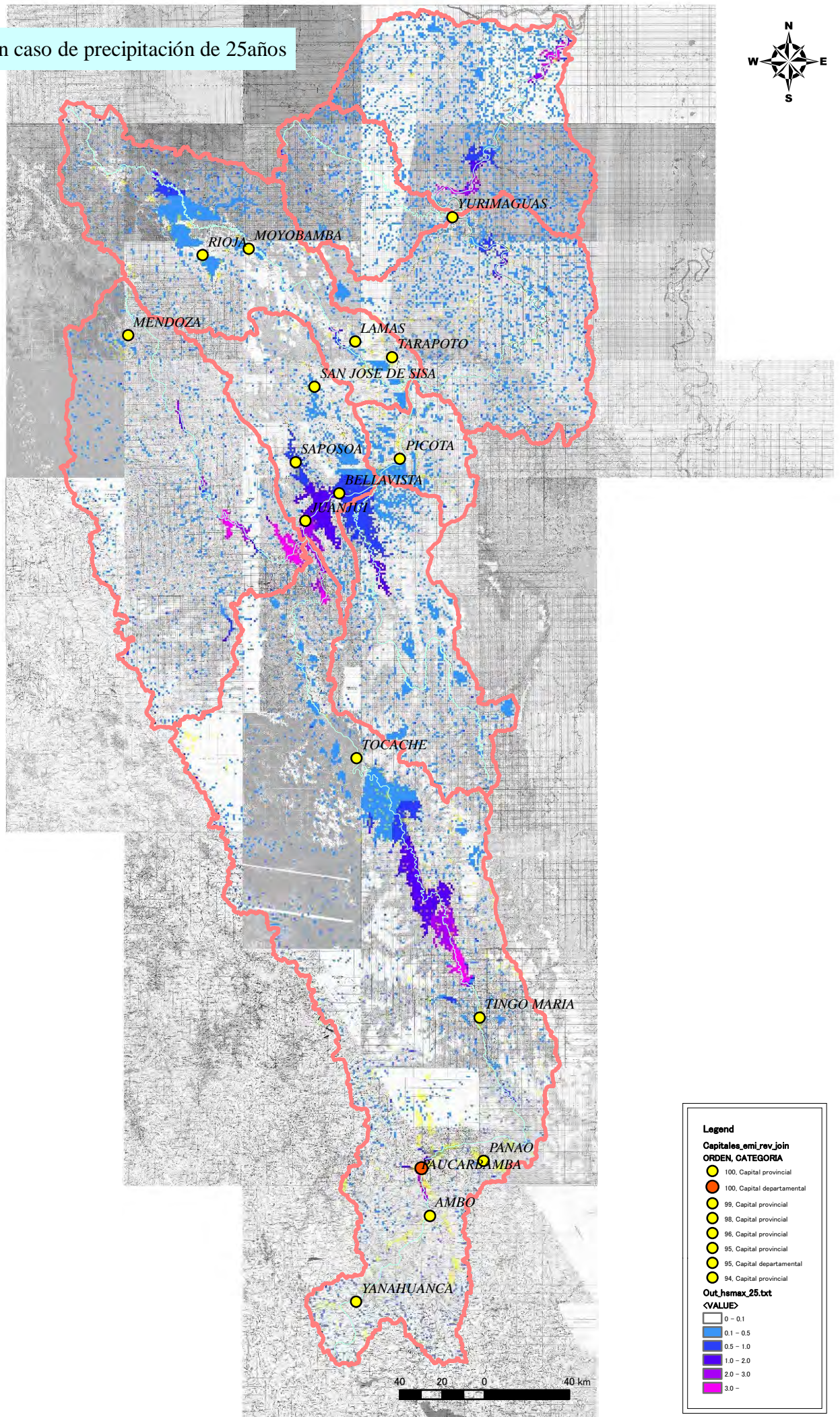
- 100, Capital departamental
- 99, Capital provincial
- 98, Capital provincial
- 96, Capital provincial
- 95, Capital provincial
- 95, Capital departamental
- 94, Capital provincial

Out_hsmx_50.txt

<VALUE>

- 0 - 0.1
- 0.1 - 0.5
- 0.5 - 1.0
- 1.0 - 2.0
- 2.0 - 3.0
- 3.0 -

Rio Huallaga, en caso de precipitación de 25 años



Legend

Capitales_emi_rev_join

ORDEN, CATEGORIA

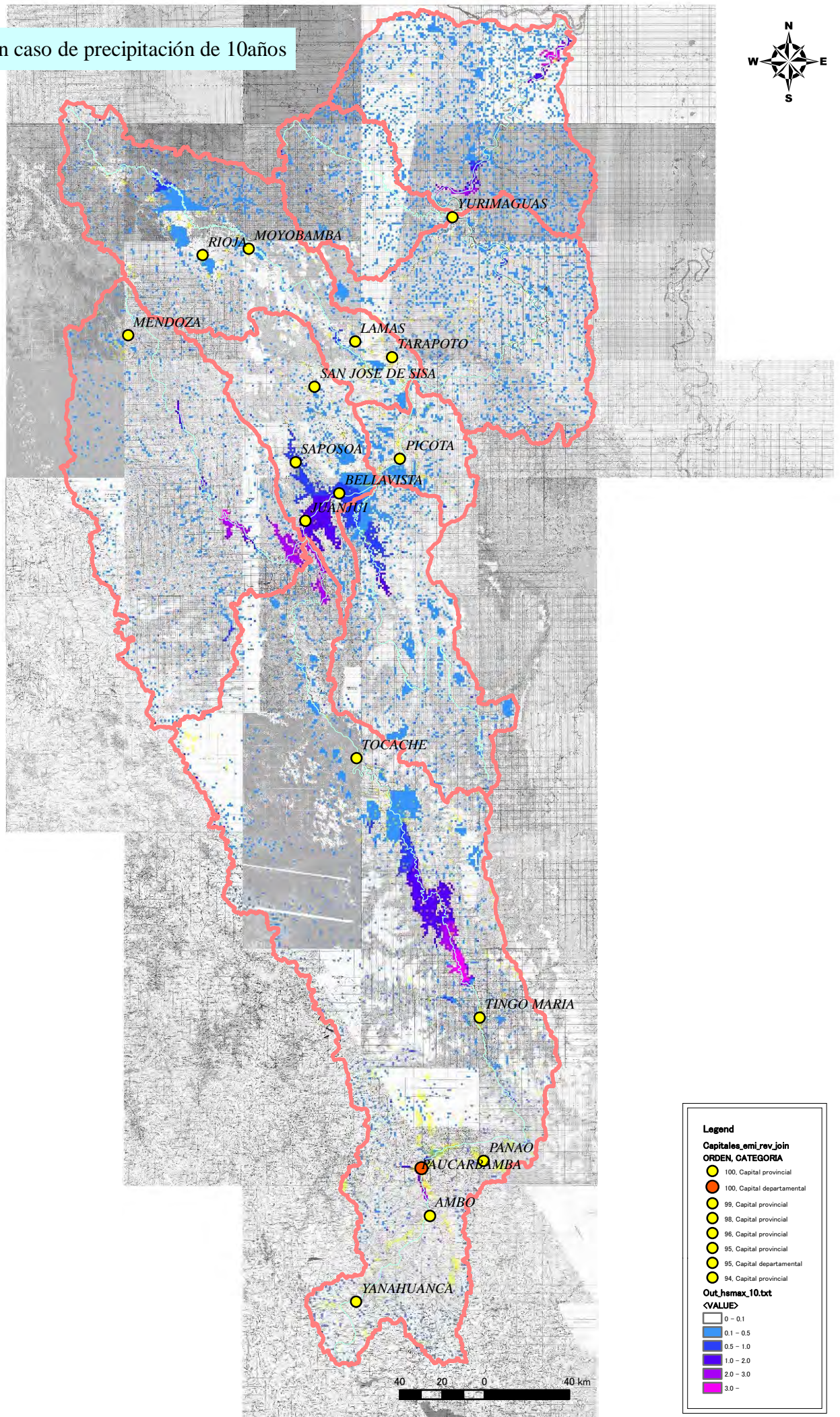
- 100, Capital departamental
- 99, Capital provincial
- 98, Capital provincial
- 96, Capital provincial
- 95, Capital provincial
- 95, Capital departamental
- 94, Capital provincial

Out_hsmx_25.txt

<VALUE>

- 0 - 0.1
- 0.1 - 0.5
- 0.5 - 1.0
- 1.0 - 2.0
- 2.0 - 3.0
- 3.0 -

Rio Huallaga, en caso de precipitación de 10años



Legend

Capitales_emi_rev_join

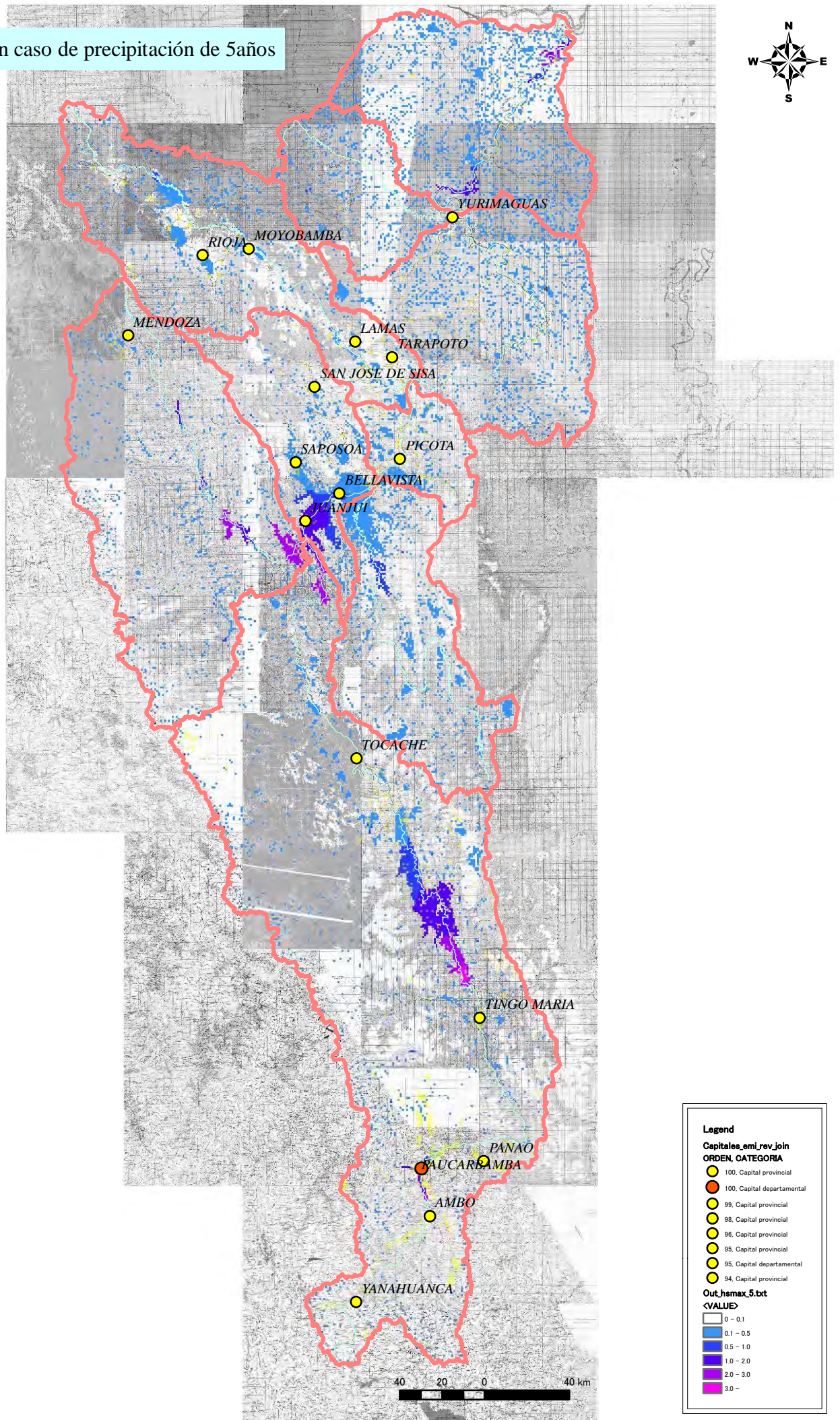
ORDEN, CATEGORIA	Symbol
100, Capital provincial	Yellow circle
100, Capital departamental	Red circle
99, Capital provincial	Yellow circle
98, Capital provincial	Yellow circle
96, Capital provincial	Yellow circle
95, Capital provincial	Yellow circle
95, Capital departamental	Yellow circle
94, Capital provincial	Yellow circle

Out_hsmx_10.txt

<VALUE>

Value Range	Color
0 - 0.1	White
0.1 - 0.5	Light Blue
0.5 - 1.0	Blue
1.0 - 2.0	Dark Blue
2.0 - 3.0	Purple
3.0 -	Dark Purple

Rio Huallaga, en caso de precipitación de 5 años



Legend

Capitales_emi_rev_join

ORDEN, CATEGORIA	Symbol
100, Capital provincial	Yellow circle
100, Capital departamental	Red circle
99, Capital provincial	Yellow circle
98, Capital provincial	Yellow circle
96, Capital provincial	Yellow circle
95, Capital provincial	Yellow circle
95, Capital departamental	Yellow circle
94, Capital provincial	Yellow circle

Out_hsmx_5.txt

<VALUE>

0 - 0.1	White square
0.1 - 0.5	Light blue square
0.5 - 1.0	Medium blue square
1.0 - 2.0	Dark blue square
2.0 - 3.0	Purple square
3.0 -	Dark purple square

Rio Huallaga, en caso de precipitación de 2 años

