

## 付 属 資 料

1. 詳細計画策定調査 M/M (R/D ドラフト含む)
2. プロジェクト概要についてのプレゼンテーション
3. 収集資料一覧
  - ① Mozambique REDD-Plus Readiness Preparation Proposal (R-PP)
  - ② プロジェクト紹介パンフレット



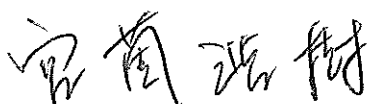
**MINUTES OF MEETING**  
**BETWEEN**  
**THE JAPANESE DETAILED PLANNING SURVEY TEAM**  
**AND**  
**NATIONAL DIRECTORATE OF LAND AND FORESTS, MINISTRY OF**  
**AGRICULTURE, ON BEHALF OF THE GOVERNMENT OF MOZAMBIQUE**  
**ON**  
**JAPANESE TECHNICAL COOPERATION**  
**FOR**  
**THE PROJECT OF ESTABLISHMENT OF SUSTAINABLE FOREST RESOURCE**  
**INFORMATION PLATFORM IN MOZAMBIQUE**

The Japanese Detailed Planning Survey Team (hereinafter referred to as “the Team”) organized by the Japan International Cooperation Agency (hereinafter referred to as “JICA”) and headed by Mr. Hiroki MIYAZONO, visited the Mozambique from December 5th to 21st, 2011, for the purpose of formulating the technical cooperation project of “Establishment of Sustainable Forest Resource Information Platform in Mozambique” (hereinafter referred to as “the Project”).

During its stay, the Team and Ministry of Agriculture (hereinafter referred to as “MINAG”), represented by Mr. Dínis Caetano Lissave, National Director of National Directorate of Lands and Forestry of Mozambique Government (hereinafter referred to as “DNTF”) had a series of discussions and exchanged views on the Project.

As a result of the discussions, the Team and the MINAG/DNTF agreed on the matters referred to in the document attached hereto.

Maputo, December 21st, 2011



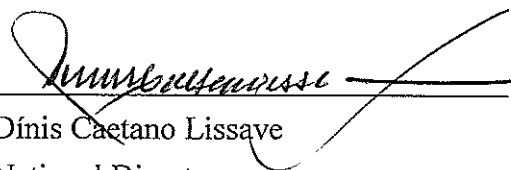

---

Hiroki MIYAZONO

Leader

Detailed Planning Survey Team

Japan International Cooperation Agency




---

Dínis Caetano Lissave

National Director

National Directorate of Lands and Forestry

Ministry of Agriculture

## THE ATTACHED DOCUMENT

Both sides agreed on the following points.

### **1. Title of the Project**

Considering the objectives and content of the Project, the project title should be changed to “The Project for the Establishment of Sustainable Forest Resource Information Platform for Monitoring REDD+”.

### **2. Framework of the Project**

The draft Record of Discussion (hereinafter referred to as “R/D”) which stipulates the framework of the Project is appropriate. The agreed draft R/D is shown in ANNEX 1.

### **3. Coordination among relevant organizations**

MINAG/DNTF will be responsible for ensuring coordination among organizations relevant to the Project.

### **4. Appointment of necessary personnel**

MINAG/DNTF will appoint personnel, including officers responsible for remote sensing, GIS, database, ground survey and forest management, prior to the commencement of the Project and maintain them throughout the project period in order to secure the effective implementation of the Project.

### **5. Implementation of pre-project activities**

In order to secure the smooth start of the Project, MINAG/DNTF will undertake several activities, such as institutional arrangements necessary for the creation of the database, as pre-project activities before starting the Project.

### **6. Securing of budget**

MINAG will endeavor to secure the budget necessary to cover the cost of inputs to be provided by Mozambican side set forth in the R/D.

### **7. Capacity enhancement**

Capacity enhancement will be mainstreamed into all activities of the Project. Both structured and on-the-job training will be provided to officers engaged in the Project.

### **8. Dissemination of project results**

MINAG/DNTF will endeavor to disseminate the result of the Project including the achievements and lessons learned to other relevant organizations and stakeholders in order to share the

knowledge and experiences.

**9. Utilization of the Grant Aid for the Forest Preservation Program**

The inputs provided by the Japanese Grant Aid for the Forest Preservation Program will be fully and effectively utilized by the Project. These two Japanese schemes will be implemented in a seamless manner.

**10. Ensuring sustainability**

MINAG/DNTF will endeavor to continue the necessary activities to regularly review and update the forest resource information platform covering entire country after the completion of the Project.

**11. Provisional schedule until project commencement**

The signing of the R/D is expected in February 2012, after the completion of internal procedures for project approval by JICA. The commencement of the Project is expected in June 2012.

ANNEX 1 Draft R/D

(Draft)

RECORD OF DISCUSSIONS

ON

THE PROJECT FOR THE ESTABLISHMENT OF SUSTAINABLE  
FOREST RESOURCE INFORMATION PLATFORM  
FOR MONITORING REDD+

IN

THE REPUBLIC OF MOZAMBIQUE

AGREED UPON BETWEEN

MINISTRY OF AGRICULTURE

AND

JAPAN INTERNATIONAL COOPERATION AGENCY

Maputo, [date]

---

Ryuichi NASU  
Chief Representative,  
Mozambique Office,  
Japan International Cooperation  
Agency

---

Daniel Miguel Angelo CLEMENTE  
Permanent Secretary  
Ministry of Agriculture,  
Republic of Mozambique

*[Handwritten signature]*

*ken*

Based on the minutes of meetings on the Detailed Planning Survey on the “Establishment of Sustainable Forest Resources Information Platform in Mozambique” signed on December 21<sup>st</sup>, 2011 between Ministry of Agriculture (hereinafter referred to as “MINAG”) and the Japan International Cooperation Agency (hereinafter referred to as “JICA”), JICA held a series of discussions with MINAG and relevant organizations to develop a detailed plan of “the Project for the Establishment of Sustainable Forest Resource Information Platform for Monitoring REDD+” (hereinafter referred to as “the Project”).

Both parties agreed the details of the Project and the main points discussed as described in the Appendix 1 and the Appendix 2 respectively.

Both parties also agreed that MINAG, the counterpart to JICA, will be responsible for the implementation of the Project in cooperation with JICA, coordinate with other relevant organizations and ensure that the self-reliant operation of the Project is sustained during and after the implementation period in order to contribute toward social and economic development of the Republic of Mozambique.

The Project will be implemented within the framework of the Agreement on Technical Cooperation signed on March 31<sup>st</sup>, 2005 (hereinafter referred to as “the Agreement”) and the Note Verbales exchanged on May 18<sup>th</sup>, 2011 between the Government of Japan (hereinafter referred to as “GOJ”) and the Government of the Republic of Mozambique (hereinafter referred to as “the GOM”).

Appendix 1: Project Description

Appendix 2: Main Points Discussed

Appendix 3: Minutes of Meetings on the Detailed Planning Survey

## PROJECT DESCRIPTION

Both parties confirmed that there is no change in the Project Description agreed on in the minutes of meetings on the concerning Preparatory Survey on the Project signed on December 21<sup>st</sup>, 2011(Appendix 3).

### I. BACKGROUND

The annual rate of deforestation in the Republic of Mozambique, whose total forest area (39 million ha) represents about 50% of the total land area, is increasing and estimated at 0.53% during the period from 2005 to 2010. It is mainly due to over exploitation of forest resources by communities for family farming and fire wood, commercial logging and mining. It is estimated that roughly 80% of total population depend on forests, with an enormous number making a bare minimum living off of the bounty of the forests. Under such circumstances, the GOM is faced with a delicate balancing act of managing these forest resources appropriately, while promoting development to provide economic stability.

Since REDD+ was taken up as an important agenda for the international community GOM has undertaken several initiatives including participation in the Forest Carbon Partnership Facility (FCPF) managed by the World Bank to promote REDD+ for addressing climate change and achieving the economic development and forest conservation.

One of the most important elements for REDD+ is national forest resource information based on sustainable and reliable forest monitoring. However the latest and only forestry sector information covering entire Mozambique is the inventory survey done in 2007 in cooperation with Italy.

In order to promote REDD+, the GOM requested the cooperation of GOJ which has an abundant track-record of cooperation in the forest sector in developing countries around the world and GOJ accepted the request. At UNFCCC COP15 in 2009, Japan committed to provide strong support to developing countries to promote REDD+. Since then Japan has been accelerating its efforts to enhance the capacity of developing countries. This project is a part of Japan's commitment and is expected to contribute to strengthening national forest resources monitoring system in Mozambique.

### II. OUTLINE OF THE PROJECT

#### 1. Title of the Project

The Project for the Establishment of Sustainable Forest Resource Information Platform for Monitoring REDD+

#### 2. Expected Goals which will be attained after the Project Completion

##### (1) Goal of the Proposed Plan

Forest resource monitoring is regularly and appropriately conducted based on



the operation plan of the Forest Resource Information Platform.

(2) Goal which will be attained by utilizing the Proposed Plan REDD+ is promoted throughout Mozambique based on the information generated through the Forest Resource Information Platform.

### 3. Outputs

- (1) Database System functioning as the Forest Resource Information Platform is established.
- (2) Basis of MRV for the Forest Resource Information Platform is developed.
- (3) RELs/RLs for the Forest Resource Information Platform are created.
- (4) Data set of biomass and carbon estimate is prepared.

### 4. Activities

(1) Database System functioning as the Forest Resource Information Platform is established.

1-1 Create a database in DNTF HQ GIS facility with a nationwide satellite image map product and all available forest and geographic information.

1-1-1 Clarify the objectives and roles of the Forest Resource Information Platform through consultations with relevant institutions and make necessary institutional arrangements under the National REDD+ Strategy

1-1-2 Design the modality of the Forest Resource Information Platform (HQ level (National) and Provincial level (Sub-National) including development of a guideline on data quality, update system, public access, etc.

1-1-3 Set up the platform database

1-1-4 Insert the satellite image raster map (purchased by Grant Aid) and collected information/data including the past inventory data

1-1-5 Update the information and correlated geodatabase

1-2 Produce forest cover and land use maps for 2 provinces by remote sensing using optical satellite images and ground truth (Gaza and Tete).

1-2-1 Develop a methodology of RS analysis and ground truth survey

1-2-2 Prepare a technical guideline

1-2-3 Implement RS analysis and ground truth survey in 2 Provinces and improve the technical guidelines

1-2-4 Produce forest cover maps as base map

(2) Basis of MRV for the Forest Resource Information Platform is developed.

2-1 Develop a technical capacity of remote sensing to detect forest cover change using SAR in 2 provinces.

2-1-1 Conduct training for SAR analysis using past satellite images

2-1-2 Prepare a technical guideline

2-1-3 Detect forest cover change using SAR on a regular basis

2-1-4 Verify the analysis results using available data sources including ground truth survey data and optical satellite data

2-1-5 Develop methodology of using SAR data for forest cover change detection

- 2-2 Establish ground monitoring system
  - 2-2-1 Establishment of Forest Inventory System through trial in entire 2 provinces (Gaza and Tete) and 2 districts for remaining 8 provinces
    - 2-2-1-1 Review the past inventory data and database (1st NFI in 1980, 2nd in 1995, 3rd in 2007)
    - 2-2-1-2 Design ground survey methods and set up a guideline (e.g. locations of permanent plots)
    - 2-2-1-3 Conduct periodical ground survey based on the guideline
    - 2-2-1-4 Compile the ground survey data
  - 2-2-2 Establishment of Forest Monitoring System in 2 districts for 10 provinces
    - 2-2-2-1 Design the ground monitoring system and develop a guideline such as frequency, reporting mechanism, etc
    - 2-2-2-2 Conduct training for ground monitoring including use of GPS and GIS
    - 2-2-2-3 Conduct ground monitoring and report results to DNRI

- (3) RELs/RLs for the Forest Resource Information Platform are created.
  - 3-1 Review the past RL and develop methods for the establishment of RELs/RLs
  - 3-2 Collect and analyze data necessary for creating RELs/RLs
  - 3-3 Create RELs/RLs

- (4) Data set of biomass and carbon estimate is prepared.
  - 4-1 Design the survey method
  - 4-2 Select sampling locations
  - 4-3 Conduct sampling
  - 4-4 Analyze sampling data
  - 4-5 Develop biomass and carbon estimation model

## 5. Input

- (1) Input by JICA
  - (a) Dispatch of Mission
    - Team Leader/REDD+
    - Remote Sensing
    - Forest GIS/Database
    - Forest Inventory
  - (b) Training in Japan and/or other countries
  - (c) Necessary equipment

Input other than indicated above will be determined through mutual consultations between JICA and MINAG during the implementation of the Project, as necessary.

- (2) Input by MINAG
 

MINAG will take necessary measures to provide at its own expense:

  - (a) Services of MINAG's counterpart personnel and administrative personnel as referred to in II-6;
  - (b) Suitable office space with necessary equipment;

- (c) Supply or replacement of machinery, equipment, instruments, vehicles, tools, spare parts and any other materials necessary for the implementation of the Project other than the equipment provided by JICA;
- (d) Information as well as support in obtaining medical service;
- (e) Credentials or identification cards;
- (f) Available data (including maps and photographs) and information related to the Project;
- (g) Running expenses necessary for the implementation of the Project;
- (h) Expenses necessary for transportation within the Republic of Mozambique of the equipment referred to in II-5 (1) c as well as for the installation, operation and maintenance thereof; and
- (i) Necessary facilities to members of the JICA missions for the remittance as well as utilization of the funds introduced into the Republic of Mozambique from Japan in connection with the implementation of the Project

## 6. Implementation Structure

The Project organization chart is given in the Annex 1. The roles and assignments of relevant organizations are as follows:

### (1) MINAG

- (a) General Director of National Directorate of Land and Forests will be responsible for overall administration and implementation of the Project as the Project Director.
- (b) Head of Natural Resource Inventory Department will be responsible for the management and coordination between relevant divisions of the Project as the Project Manager.
- (c) Personnel of the Natural Resource Inventory Department will be assigned to carry out project activities under the guidance of the Project Director and the Project Manager.

### (2) JICA Experts

The JICA experts will give necessary technical guidance, advice and recommendations to MINAG on any matters pertaining to the implementation of the Project.

### (3) Joint Coordinating Committee

Joint Coordinating Committee (hereinafter referred to as "JCC") will be established in order to facilitate inter-organizational coordination. JCC will be held whenever deems it necessary. A list of proposed members of JCC is shown in the Annex 2.

## 7. Project Site(s) and Beneficiaries

### (1) Project site

The target area is the whole area of the Republic of Mozambique.

### (2) Beneficiaries

- (a) Direct: Personnel of MINAG and relevant organizations engaged in forest resource monitoring

(b) Indirect: the whole nationals of the Republic of Mozambique

#### 8. Duration

The duration of the Project will be five (5) years from June 2012.

#### 9. Reports

JICA will prepare and submit the following reports to the MINAG .

- (1) 40 copies of Inception Report at the commencement of the first work period in the Republic of Mozambique in English and Portuguese.
- (2) 40 copies of Interim Report at the time about 30 months after the commencement of the first work period in the Republic of Mozambique in English.
- (3) 40 copies of Draft Final Report at the end of the last work period in the Republic of Mozambique in English and Portuguese.
- (4) 50 copies of Final Report within one (1) month after the receipt of the comments on the Draft Final Report in English and Portuguese.

#### 10. Environmental and Social Considerations

MINAG agreed to abide by 'JICA Guidelines for Environmental and Social Considerations' in order to ensure that appropriate considerations will be made for the environmental and social impacts of the Project.

### **III. UNDERTAKINGS OF MINAG AND GOM**

1. MINAG and GOM will take necessary measures to:

- (1) ensure that the technologies and knowledge acquired by the Republic of Mozambique nationals as a result of Japanese technical cooperation contributes to the economic and social development of the Republic of Mozambique, and that the knowledge and experience acquired by the personnel of the Republic of Mozambique from technical training as well as the equipment provided by JICA will be utilized effectively in the implementation of the Project; and
- (2) grant privileges, exemptions and benefits to members of the JICA missions referred to in II-5 (1) above and their families, which are no less favorable than those granted to experts and members of the missions and their families of third countries or international organizations performing similar missions in the Republic of Mozambique.

2. Other privileges, exemptions and benefits will be provided in accordance with the Agreement and the Note Verbales exchanged on May 18<sup>th</sup>, 2011 between the GOJ and the GOM.

### **IV. EVALUATION**

JICA will conduct the following evaluations and surveys to mainly verify sustainability and impact of the Project and draw lessons. The MINAG is required to provide necessary support for them.

1. Ex-post evaluation three (3) years after the project completion, in principle
2. Follow-up surveys on necessity basis

#### **V. PROMOTION OF PUBLIC SUPPORT**

For the purpose of promoting support for the Project, MINAG will take appropriate measures to make the Project widely known to the people of the Republic of Mozambique.

#### **VI. MUTUAL CONSULTATION**

JICA and MINAG will consult each other whenever any major issues arise in the course of Project implementation.

#### **VII. AMENDMENTS**

The record of discussions may be amended by the minutes of meetings between JICA and MINAG.

The minutes of meetings will be signed by authorized persons of each side who may be different from the signers of the record of discussions.

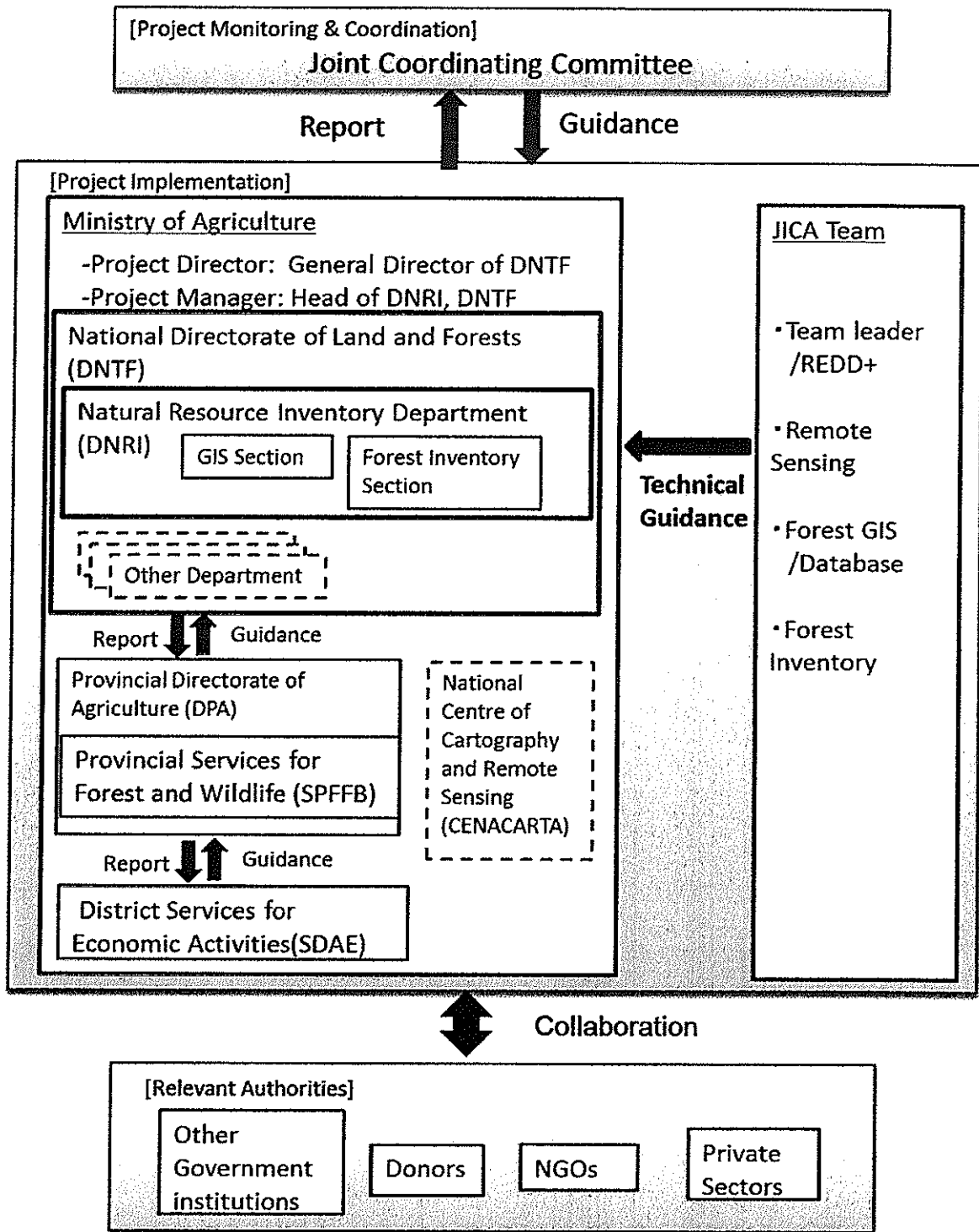
Annex 1 Project Organization Chart

Annex 2 Functions and List of Proposed Members of Joint Coordinating Committee

FCM

Handwritten signature

**Annex 1: Project Organization Chart**



MM

*[Handwritten signature]*

**Annex 2: Functions and List of Proposed Members of Joint Coordinating Committee**

1. Functions

The Joint Coordinating Committee (JCC) will be established. The JCC will be held whenever deems it necessary. The functions of the JCC are as follows:

- (1) To facilitate coordination with relevant authorities
- (2) To review the overall progress of the project activities; and
- (3) To review and exchange views on major issues arising from or in concerning the Project and recommend corrective measures.

2. Composition

(1) Chairperson: Permanent Secretary, MINAG

(2) Members:

(a) Mozambique side

- General Director, National Directorate of Land and Forests(DNTF), MINAG
- Deputy General Director, DNTF, MINAG
- Head, Planning Department, DNTF, MINAG
- Head, Natural Resource Inventory Department, DNTF, MINAG
- Head, Forest Department, DNTF, MINAG
- Head, Wildlife Department, DNTF, MINAG
- Head, Land Surveying Department, DNTF, MINAG
- Head, Cadastral Department, DNTF, MINAG
- Head, Financial and Administration Department, DNTF, MINAG
- Head, Law Enforcement Department, DNTF, MINAG
- Head, Community based management section, DNTF, MINAG
- Representative of National Centre of Cartography and Remote Sensing, MINAG
- Representative of the Ministry for Coordination of Environmental Affairs
- Counterparts to the JICA Mission Members, as needed

(b) Japanese side

- JICA Mission Members
- Chief Representative, JICA Mozambique Office
- Other personnel concerned, to be nominated by JICA if necessary

NOTE:

- The Chairperson may request and admit attendance of other personnel concerned with the Project, as needed.
- Official(s) of the Embassy of Japan may attend the JCC as observer(s).

HM

**MAIN POINTS DISCUSSED**

To be completed after discussion prior to the signing of the R/D.

H67

*Handwritten signature*



**Appendix 3**

**MINUTES OF MEETINGS ON THE DETAILED PLANNING SURVEY**

To be attached prior to the signing of the R/D.

14

*Rai* —

*hcm*





# Overview of the Survey

**“The Project for the Establishment of Sustainable Forest Resource Information Platform for Monitoring REDD+”**

**19 December 2011**

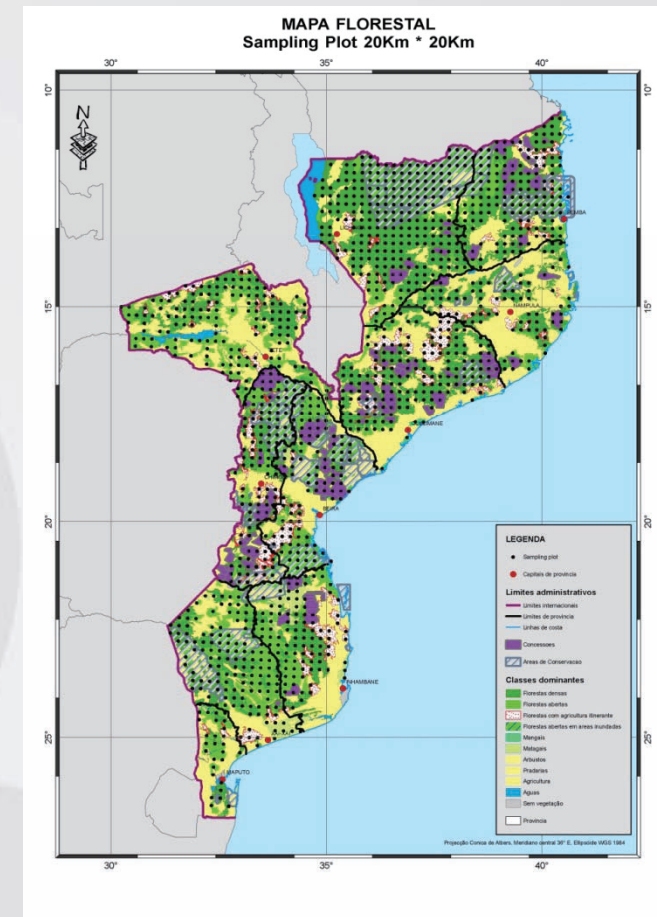
**Japan International Cooperation Agency (JICA)**



## Purpose of the Survey

### The Detailed Planning Survey is aiming to:

- ✓ Collect and analyze information on the status of the country's forestry sector, including forest monitoring system and its opportunities and challenges, and the country's initiatives for addressing climate change particularly in terms of REDD+ (Reducing Emissions from Deforestation & Degradation),
- ✓ Consult with Mozambican authorities and other relevant stakeholders to discuss about the plan of the Project; and
- ✓ Exchange signed documents, which include the overall plan of the Project, between Mozambican authority and the Survey team.

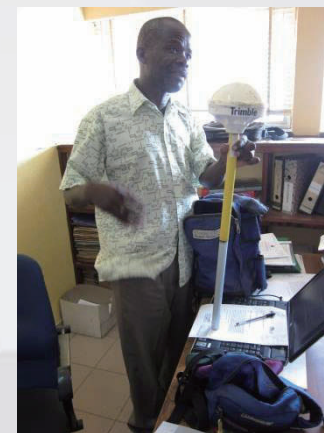




## Survey Team

- |                        |  |
|------------------------|--|
| 1. Mr. Hiroki MIYAZONO | Team leader, JICA HQ                       |
| 2. Ms. Saeko TERADA    | Cooperation planning, JICA HQ              |
| 3. Mr. Taira NAKANISHI | Remote sensing/GIS, Kokusai Kogyo Co., Ltd |
| 4. Mr. Wataru YAMAMOTO | Forest inventory, RECS International Inc.  |

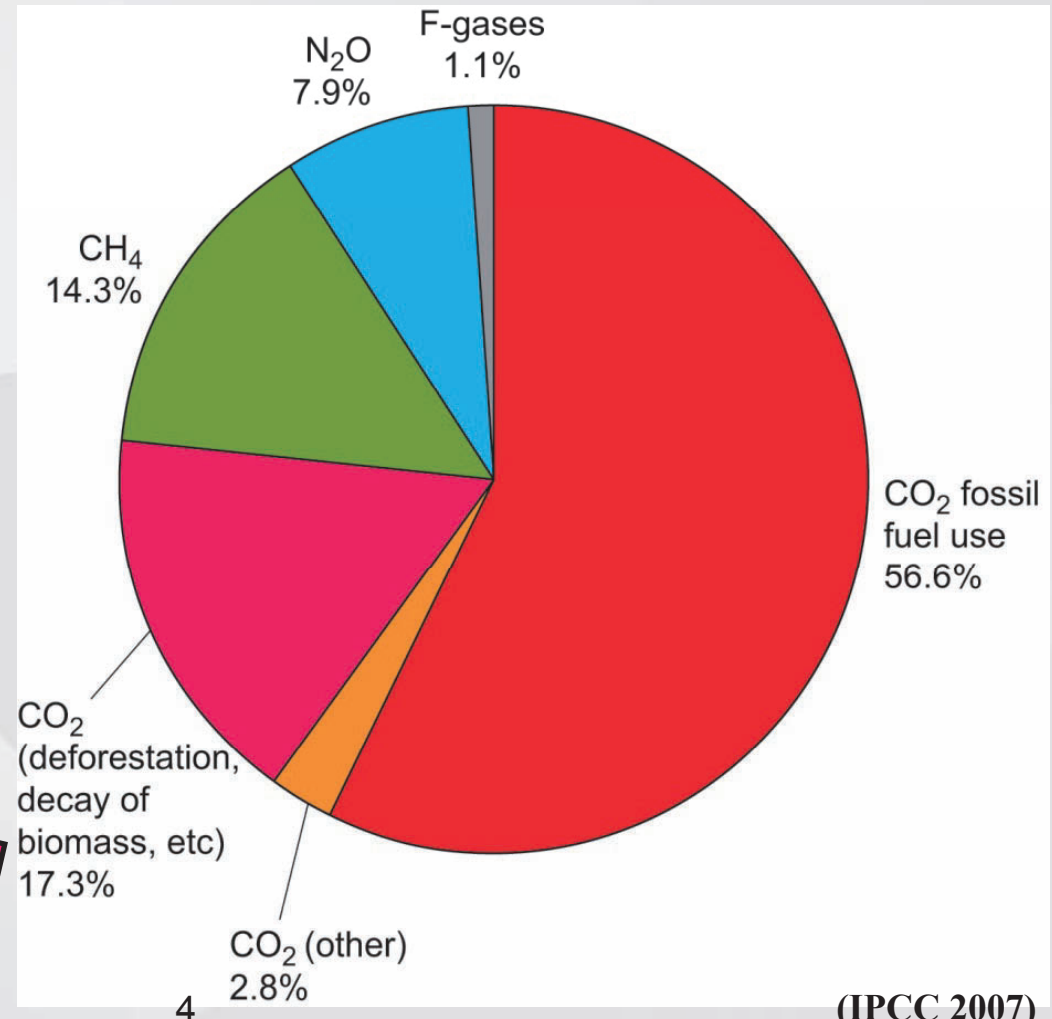
**Survey schedule: 5th to 22nd December 2011**



Japan International Cooperation Agency

## Why forests are so important for addressing Climate Change?

- Emissions from deforestation accounts for 17% of total GHG emissions.
- Underlying causes of deforestation
  - ✓ Conversion to farmland
  - ✓ Demand for fuel wood
  - ✓ Illegal logging
  - ✓ Forest fire
  - ✓ ???



(IPCC 2007)



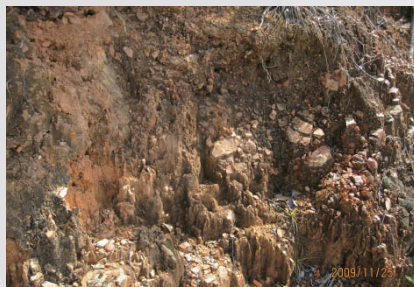


## What is JICA's perception & principle on REDD+?

- ✓ Important primarily for addressing CC, but maximizing multiple benefits through REDD+ is no less important than CC.



**Ecotourism**



**Erosion control**



**Biodiversity conservation**



**Water supply**



**Livelihood improvement**

Japan International Cooperation Agency



# What is JICA doing on REDD+ in the world?

## 1. Policy & Institutional Framework



## 3. Research & Development



## 2. Forest Monitoring System (REL/MRV)



## 4. Demonstration activities







# Proposed Overall Structure of the Project in Mozambique

[Establishment of Sustainable Forest Resource Information Platform for Monitoring REDD+]

## Executing Agency: Mozambique DNTF

1. Database System functioning as the Forest Resource Information Platform is established.

2. Basis of MRV for the Forest Resource Information Platform is developed.

3. RELs/RLs for the Forest Resource Information Platform are created.

4. Data set of biomass and carbon estimate is prepared.

Japan Grant Aid

- Satellite Images
- GIS facility
- Survey equipment

Cooperation/  
Coordination  
with  
other relevant  
initiatives &  
projects  
on  
REDD+

International Cooperation Agency



# Provisional timeframe of Japan's cooperation

